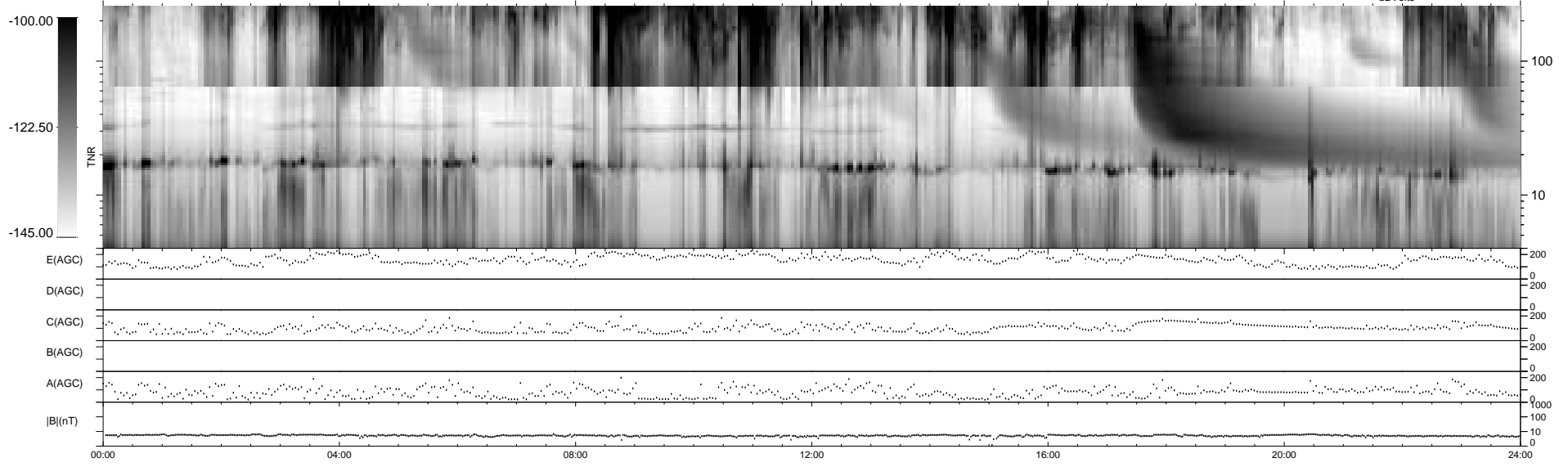
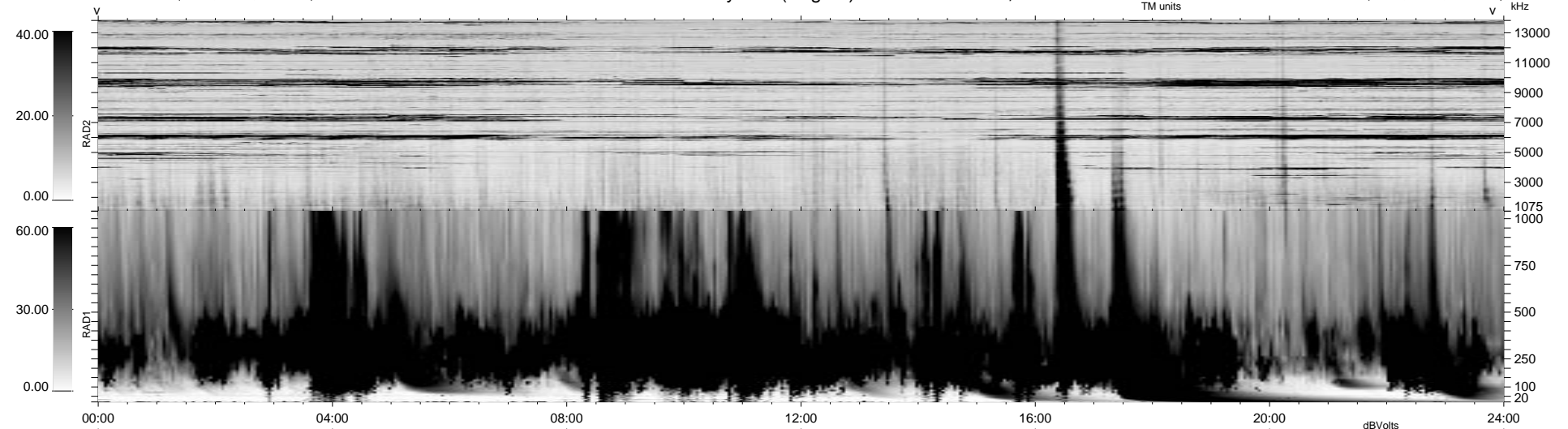


6 bad + 933 good MF/939MF projected (99%) - 0 missing MFs  
 Avg interval = 180 secs  
 Re = 70.98 (-35.08, -61.52, 4.75 GSE)

1.7d VMS-SunOS LZ version = v01

### WIND/WAVES Summary Plot (Page 1) for 09-DEC-1999, DOY = 343

DAILY Tue Sep 16, 2008  
 Re = 70.19 (-30.21, -62.80, 8.36 GSE)



```

RAD2
Antenna Ey .....
Mode LIN(1) .....
SUM/SEP SEP .....
Toggle OFF .....

RAD1
Antenna Ex .....
Mode LIS(2,3) .....
SUM/SEP SUM .....
Toggle OFF .....

TNR
Antenna ExEy .....
Mode A-32 .....
Sweep ACE .....
  
```