

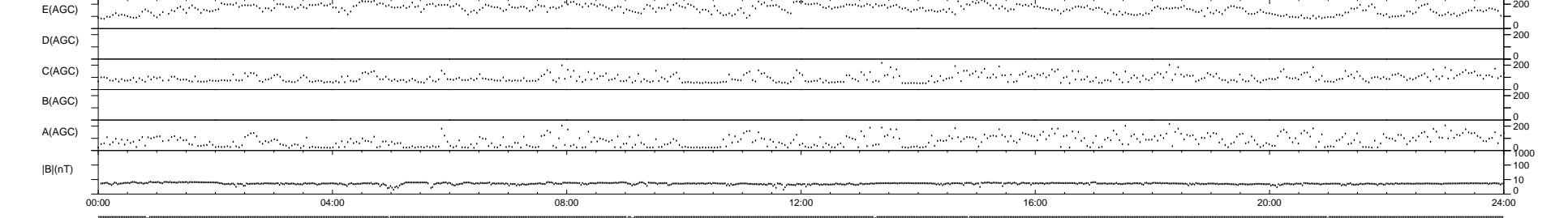
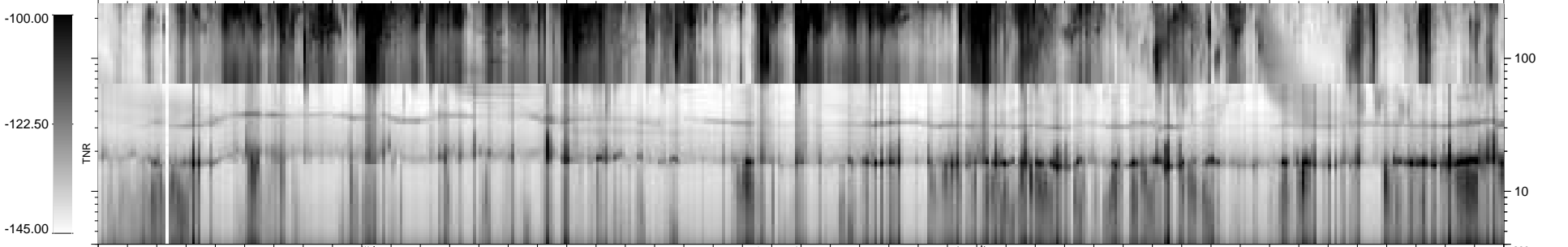
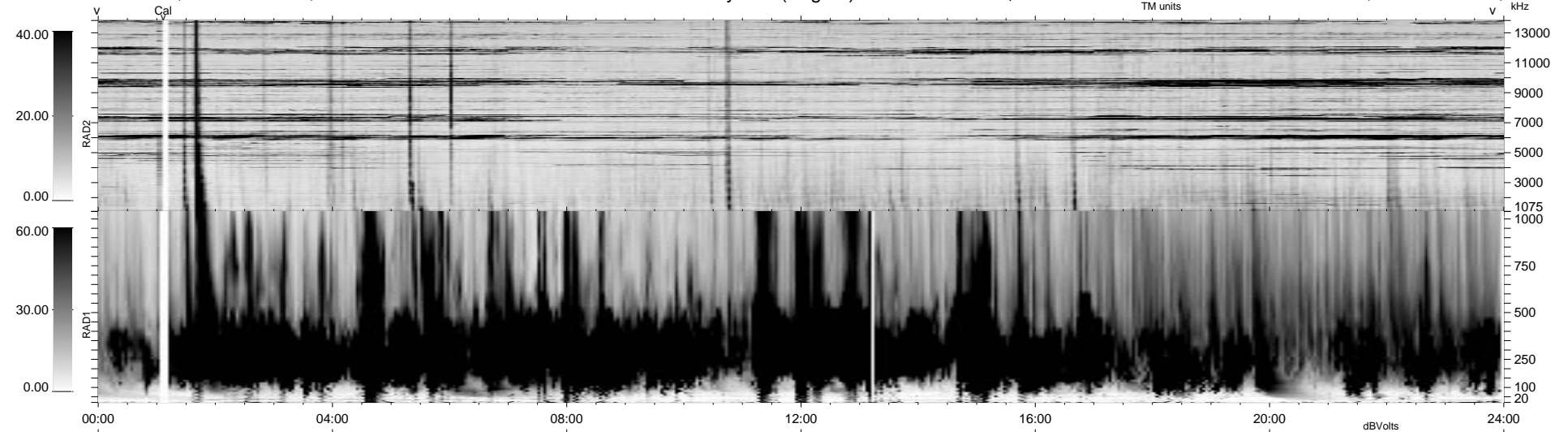
10 bad + 929 good MF/939MF projected (98%) - 0 missing MFs  
 Avg interval = 180 secs  
 Re = 70.24 (-39.00, -58.42, 0.96 GSE)

1.7d VMS-SunOS

LZ version = v01

### WIND/WAVES Summary Plot (Page 1) for 08-DEC-1999, DOY = 342

DAILY Tue Sep 16, 2008  
 Re = 70.98 (-35.11, -61.51, 4.72 GSE)



```

RAD2
Antenna Ey .....
Mode LIN(1) .....
SUM/SEP SEP .....
Toggle OFF .....

RAD1
Antenna Ex .....
Mode LIS(2,3) .....
SUM/SEP SUM .....
Toggle OFF .....

TNR
Antenna ExEy .....
Mode A-32 .....
Sweep ACE .....
  
```