

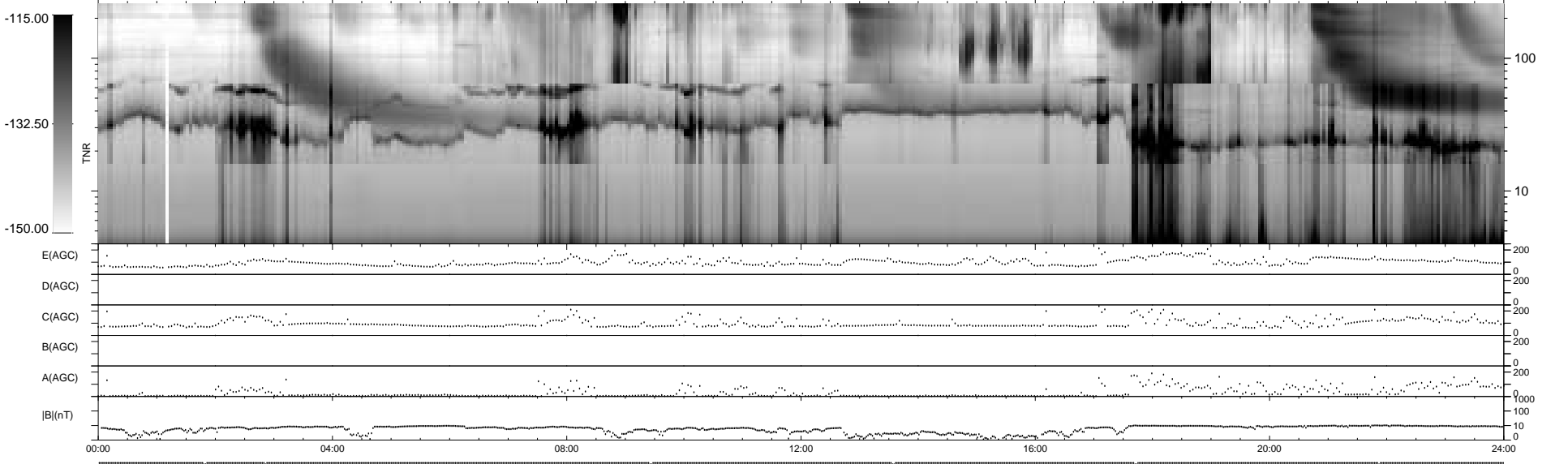
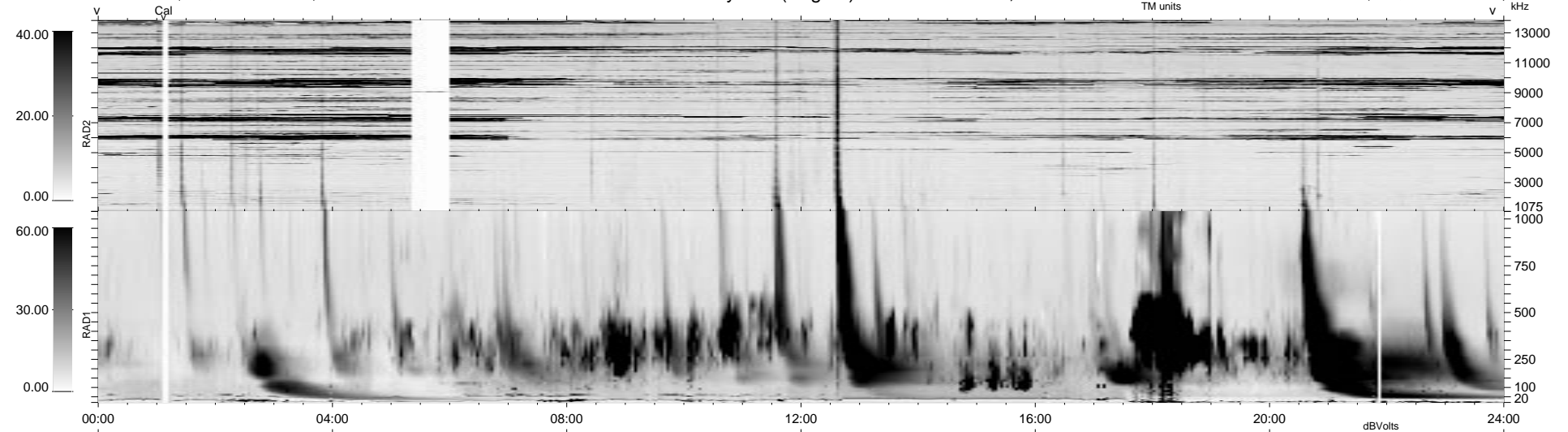
10 bad + 929 good MF/939MF projected (98%) - 0 missing MFs
 Avg interval = 180 secs
 Re = - 46.82 (16.64, -39.73, 18.37 GSE)

1.7d VMS-SunOS

LZ version = v02

WIND/WAVES Summary Plot (Page 1) for 28-NOV-1999, DOY = 332

DAILY Tue Sep 16, 2008
 Re = 35.90 (20.64, -24.03, 16.88 GSE)



RAD2
 Antenna Ey FIX(160) LIN(1)
 Mode LIN(1)
 SUM/SEP SEP
 Toggle OFF
 RAD1
 Antenna Ex
 Mode LIS(2,3)
 SUM/SEP SUM
 Toggle OFF
 TNR
 Antenna ExEy
 Mode A-32
 Sweep ACE