

10 bad + 929 good MF/939MF projected (98%) - 0 missing MFs
 Avg interval = 180 secs
 Re = 55.30 (11.06, -51.21, 17.69 GSE)

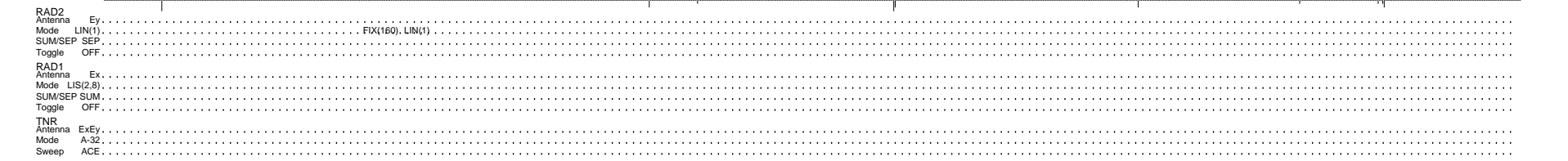
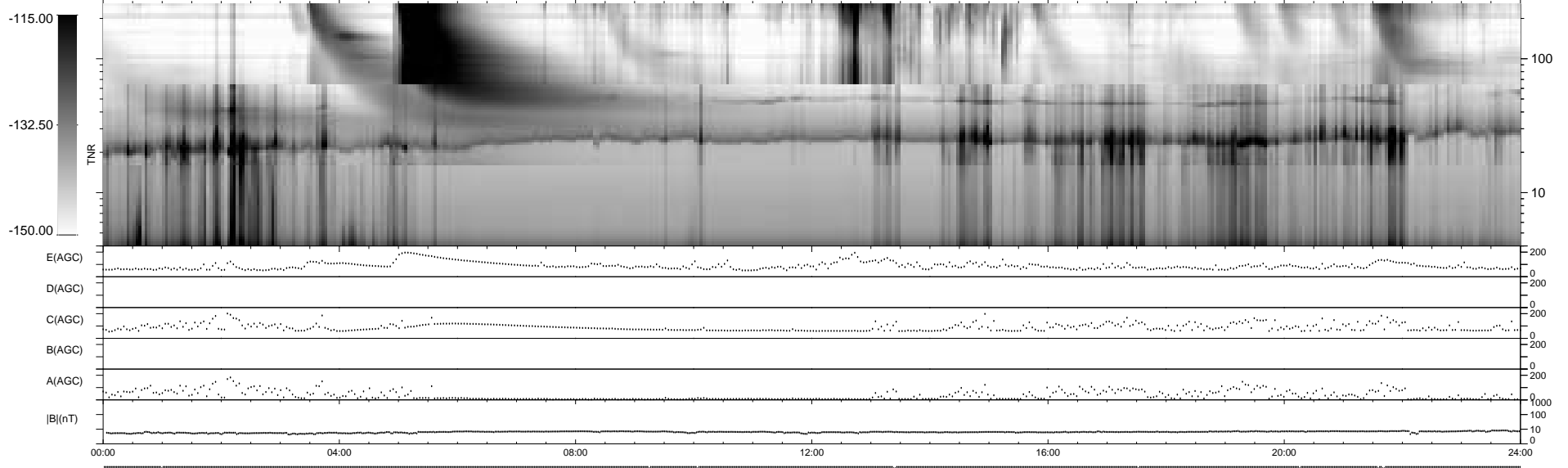
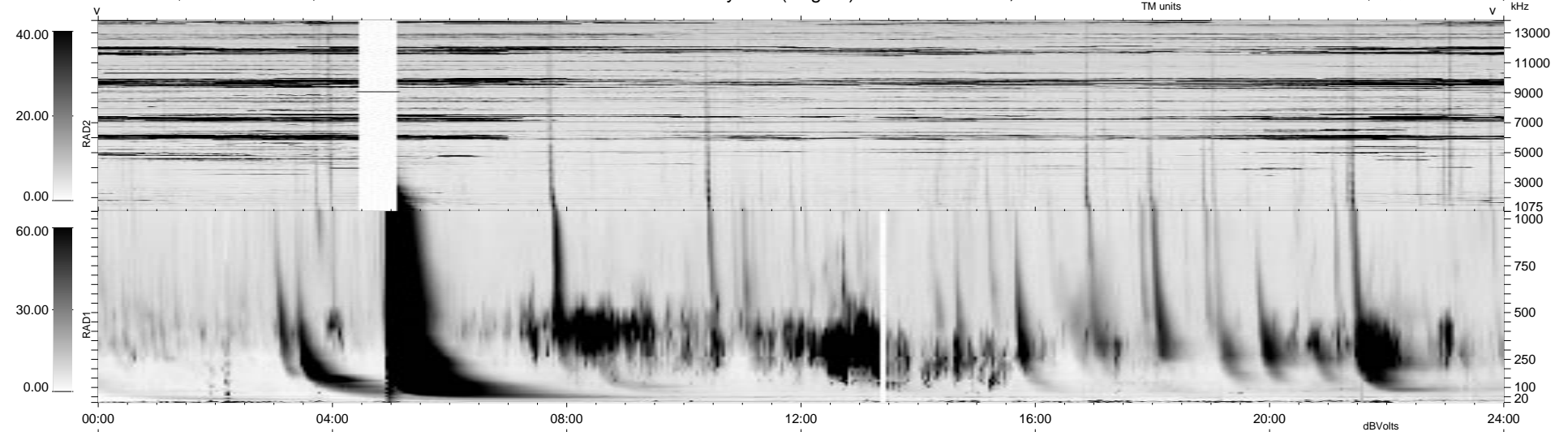
1.7d VMS-SunOS

LZ version = v01

WIND/WAVES Summary Plot (Page 1) for 27-NOV-1999, DOY = 331

DAILY Tue Sep 16, 2008

Re = 46.89 (16.61, -39.82, 18.37 GSE)



```

RAD2
Antenna Ey .....
Mode LIN(1) ..... FIX(160), LIN(1)
SUM/SEP SEP .....
Toggle OFF .....

RAD1
Antenna Ex .....
Mode LIS(2,3) .....
SUM/SEP SUM .....
Toggle OFF .....

TNR
Antenna ExEy .....
Mode A-32 .....
Sweep ACE .....
  
```