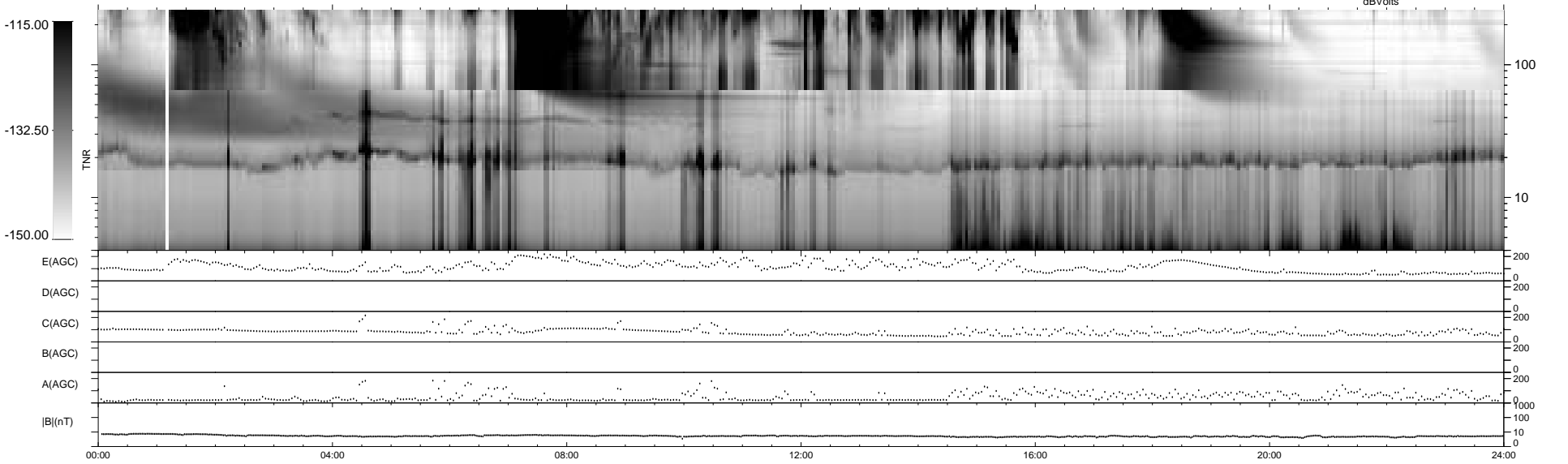
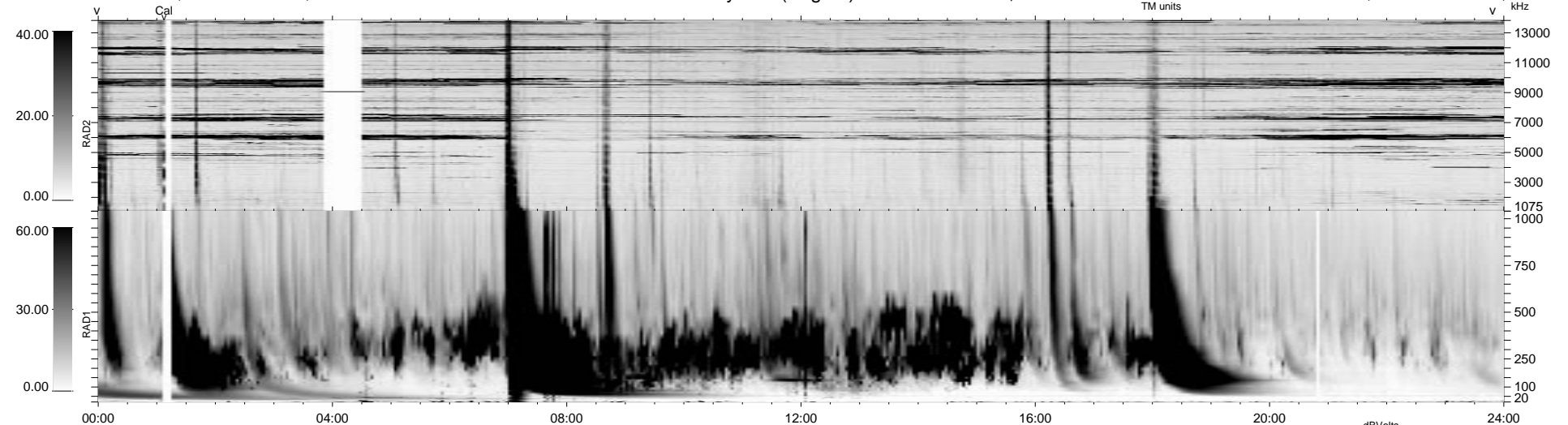


8 bad + 931 good MF/939MF projected (99%) - 0 missing MFs
 Avg interval = 180 secs
 Re = - 61.62 (5.01, -59.36, 15.75 GSE)

1.7d VMS-SunOS LZ version = v01
 DAILY Tue Sep 16, 2008
 Re = 55.35 (11.02, -51.28, 17.68 GSE)

WIND/WAVES Summary Plot (Page 1) for 26-NOV-1999, DOY = 330



RAD2
 Antenna Ey FIX(160), LIN(1)
 Mode LIN(1)
 SUM/SEP SEP
 Toggle OFF
 RAD1
 Antenna Ex
 Mode LIS(2,3)
 SUM/SEP SUM
 Toggle OFF
 TNR
 Antenna ExEy
 Mode A-32
 Sweep ACE