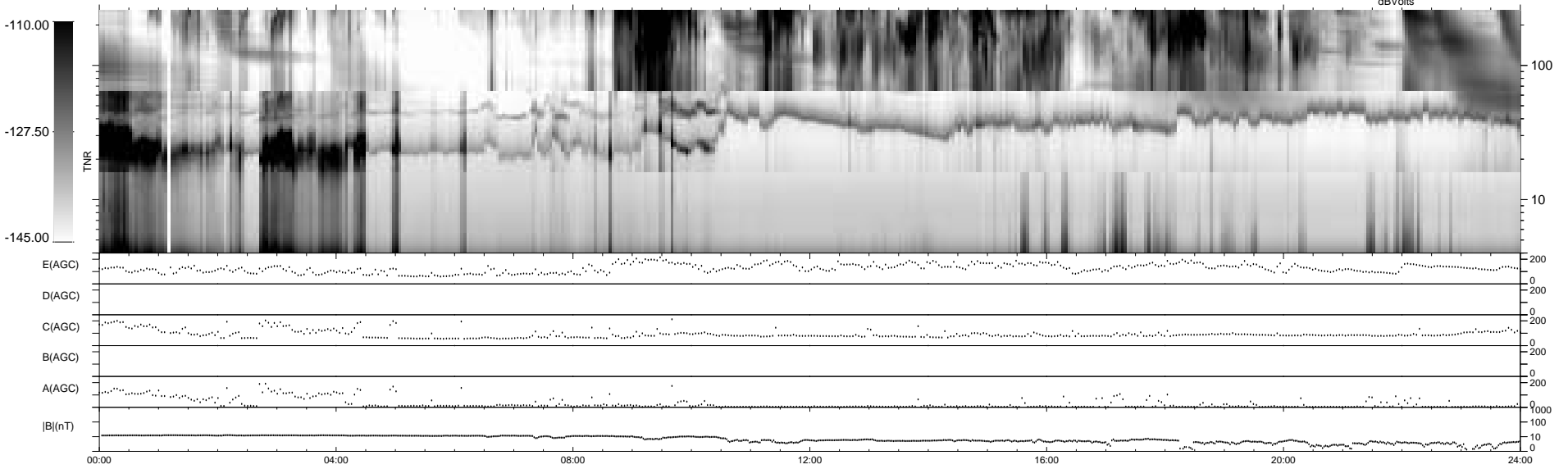
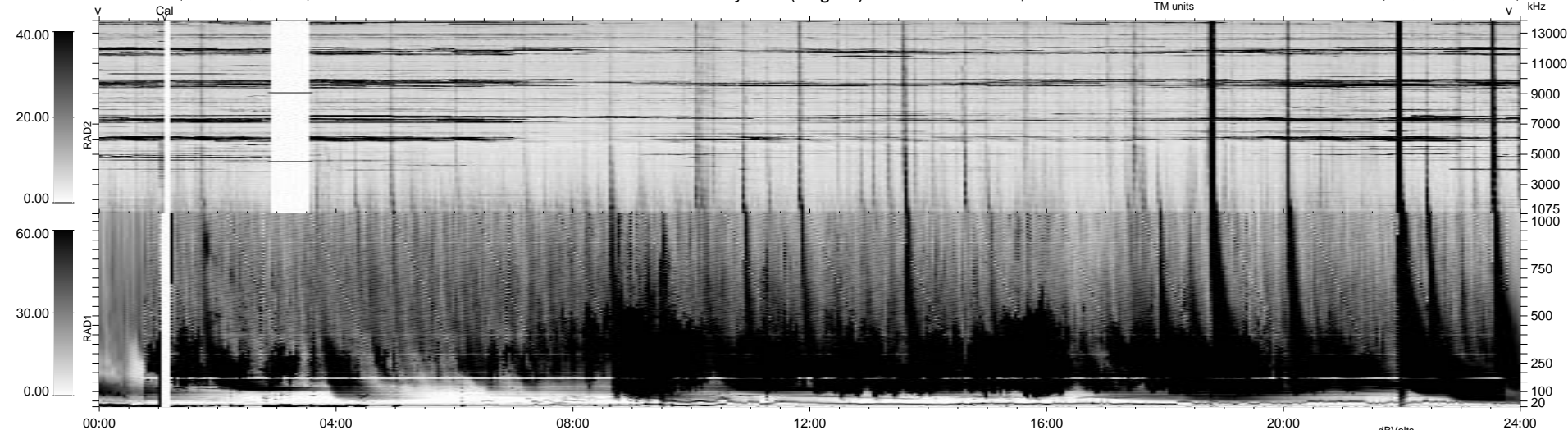


7 bad + 932 good MF/939MF projected (99%) - 0 missing MFs  
 Avg interval = 180 secs  
 Re = 68.77 (-6.93, -67.73, 9.75 GSE)

1.7d VMS-SunOS LZ version = v01

WIND/WAVES Summary Plot (Page 1) for 24-NOV-1999, DOY = 328

DAILY Tue Sep 16, 2008  
 Re = 66.08 (-1.10, -64.78, 13.00 GSE)



```

RAD2
Antenna Ey ..... LIS(8.11) LN(1) .....
Mode LIN(1) .....
SUM/SEP SEP .....
Toggle OFF .....

RAD1
Antenna Ex ..... LIS(2.8) .....
Mode LIS(2.8) ..... LIS(2.8) .....
SUM/SEP SUM ..... SEP ..... SUM
Toggle OFF .....

TNR
Antenna ExEy .....
Mode A-32 .....
Sweep ACE .....
  
```