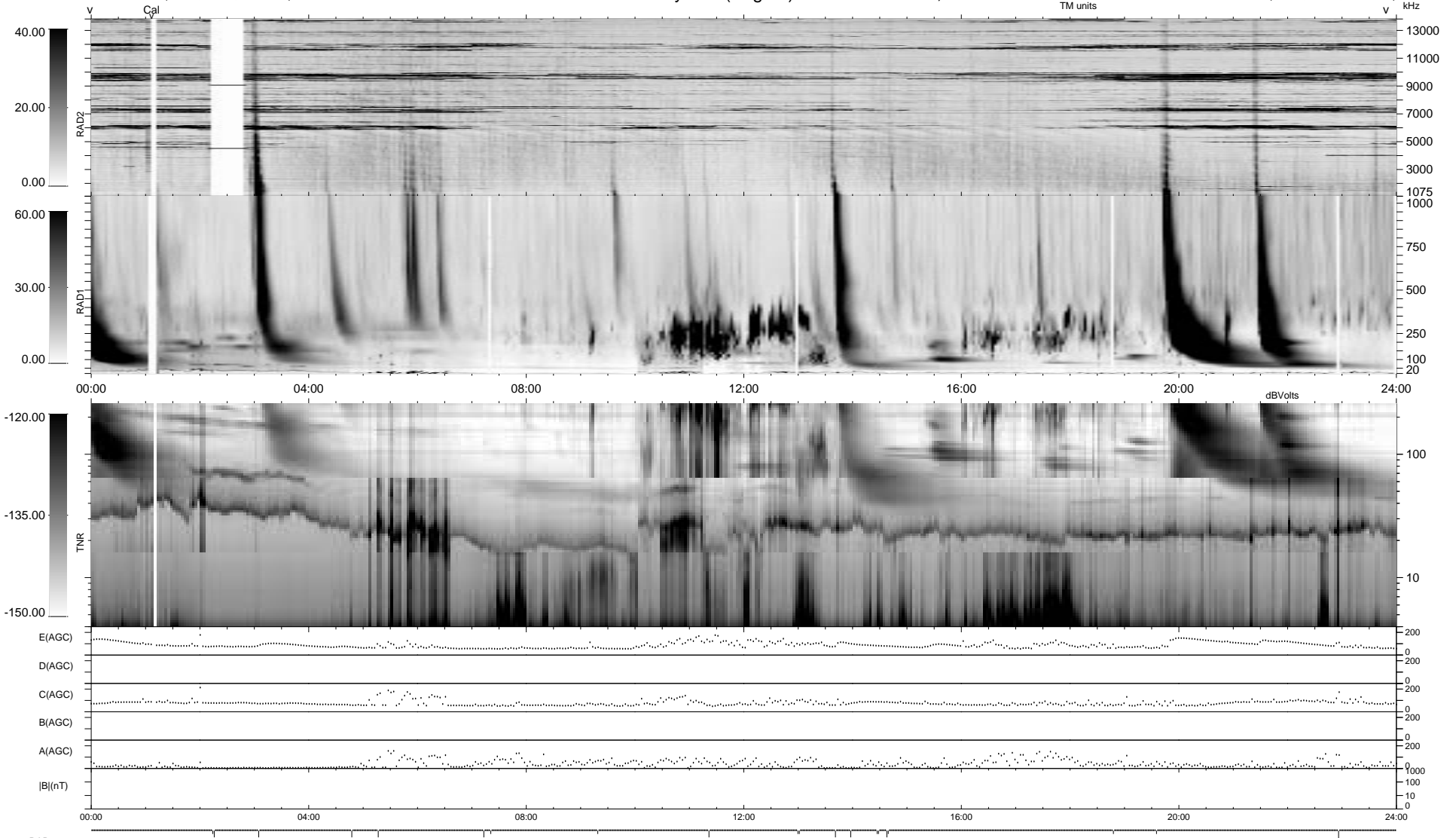


20 bad + 919 good MF/939MF projected (97%) - 0 missing MFs
 Avg interval = 180 secs
 Re = - 69.41 (-17.59, -67.10, 2.30 GSE)

1.7d VMS-SunOS LZ version = v01
 DAILY Tue Sep 16, 2008
 Re = 69.88 (-12.52, -68.48, 6.10 GSE)

WIND/WAVES Summary Plot (Page 1) for 22-NOV-1999, DOY = 326



```

RAD2
Antenna Ey ..... LIS(&t1)LIN(1)
Mode LIN(1)
SUM/SEP SEP .....
Toggle OFF

RAD1
Antenna Ex .....
Mode LIS(2,3)
SUM/SEP SUM .....
Toggle OFF

TNR
Antenna ExEy .....
Mode A-32 .....
Sweep ACE .....
  
```