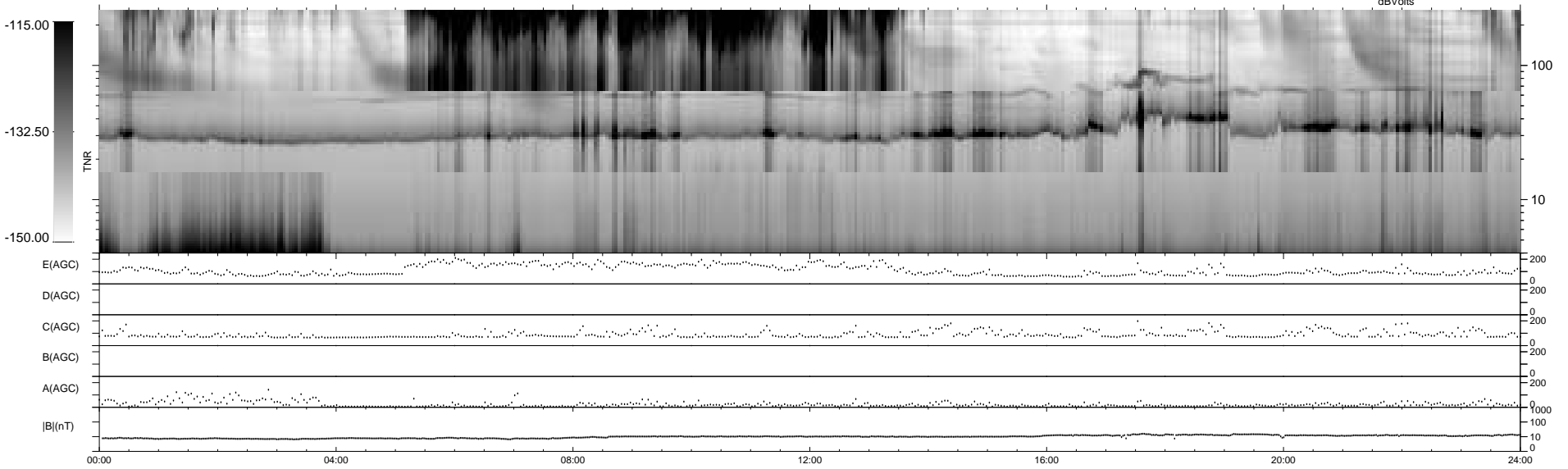
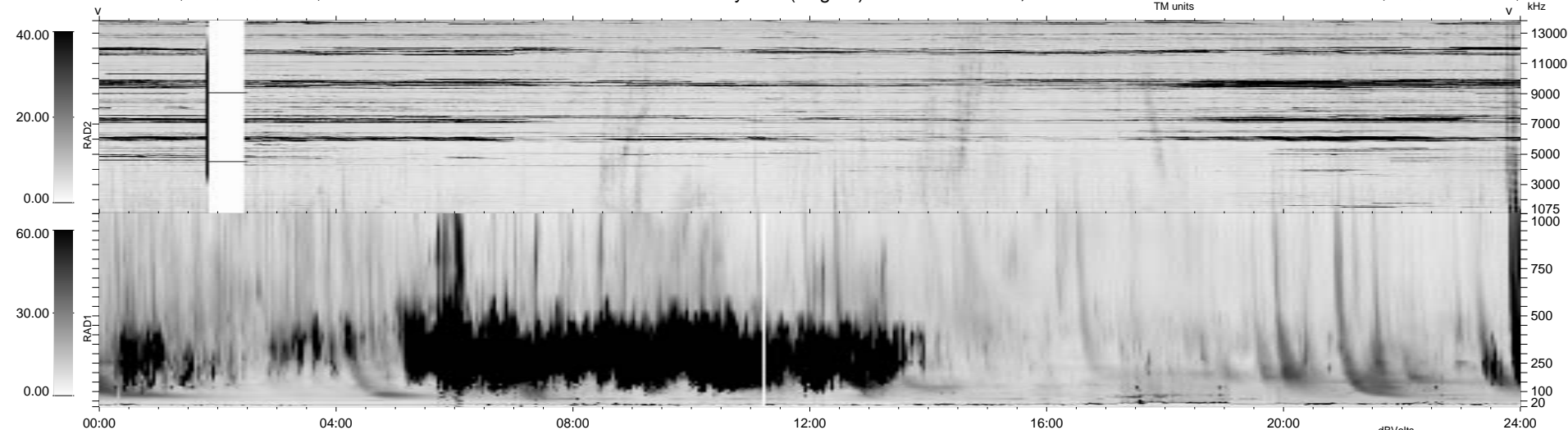


9 bad + 930 good MF/939MF projected (99%) - 0 missing MFs
 Avg interval = 180 secs
 Re = - 67.36 (-22.17, -63.59, -1.61 GSE)

1.7d VMS-SunOS LZ version = v01

WIND/WAVES Summary Plot (Page 1) for 21-NOV-1999, DOY = 325

DAILY Tue Sep 16, 2008
 Re = 69.40 (-17.63, -67.09, 2.27 GSE)



RAD2
 Antenna Ey LIS(8,11)LIN(1)
 Mode LIN(1)
 SUM/SEP SEP
 Toggle OFF

RAD1
 Antenna Ex
 Mode LIS(2,3)
 SUM/SEP SUM
 Toggle OFF

TNR
 Antenna ExEy
 Mode A-32
 Sweep ACE