

5 bad + 934 good MF/939MF projected (99%) - 0 missing MFs
 Avg interval = 180 secs
 Re = 63.67 (-26.06, -57.83, -5.45 GSE)

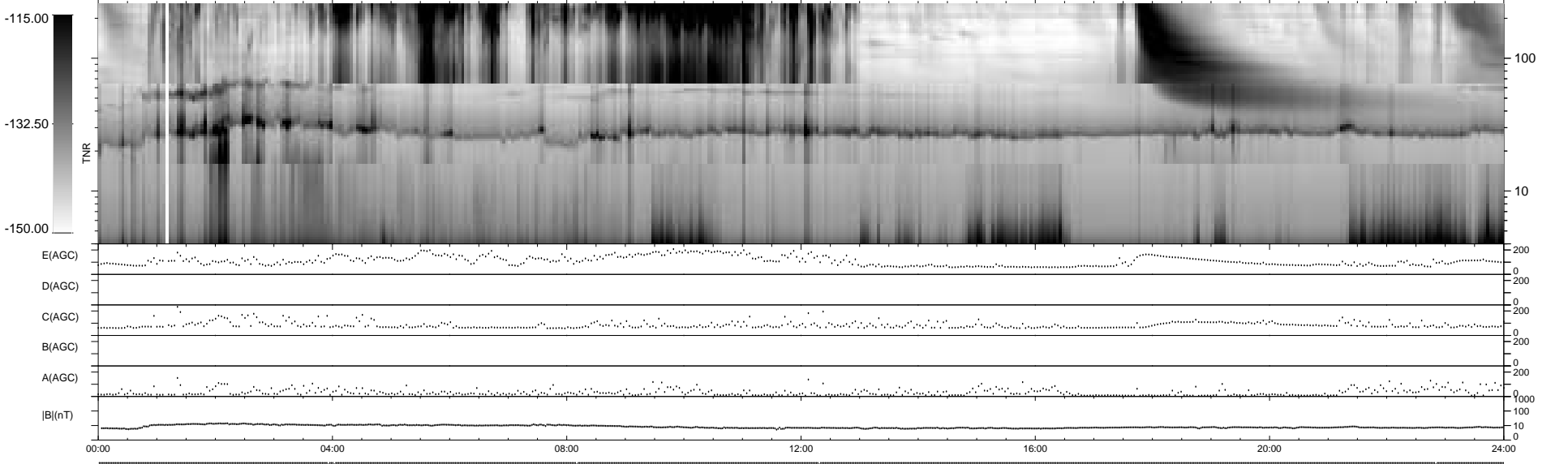
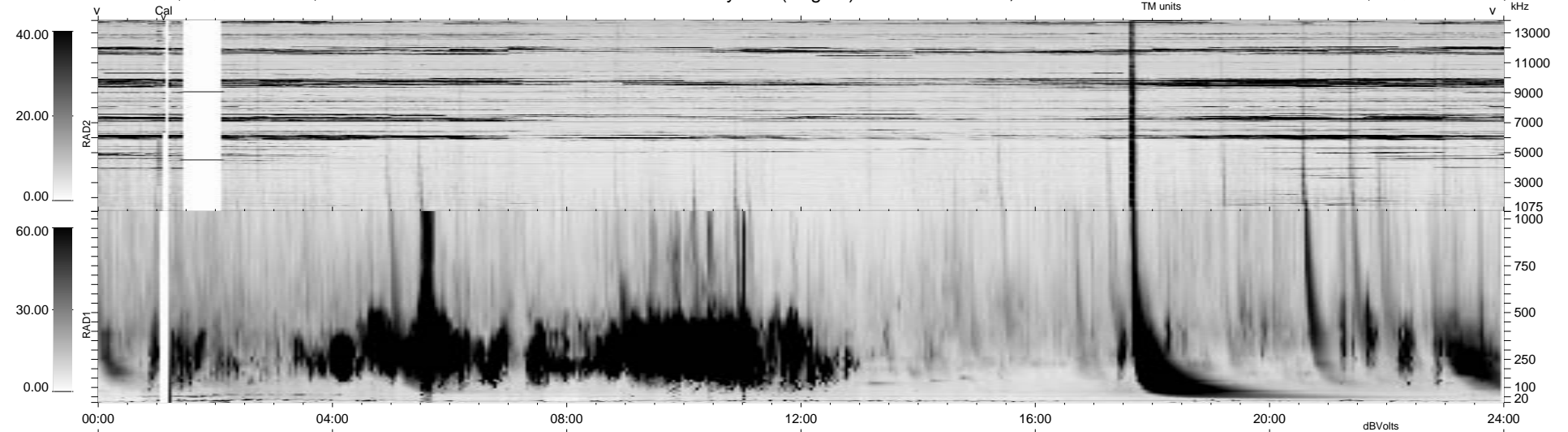
1.7d VMS-SunOS

LZ version = v01

WIND/WAVES Summary Plot (Page 1) for 20-NOV-1999, DOY = 324

DAILY Tue Sep 16, 2008

Re = 67.34 (-22.20, -63.55, -1.64 GSE)



```

RAD2
Antenna Ey .....
Mode LIN(1) ..... LIS(6,11), LIN(1) .....
SUM/SEP SEP .....
Toggle OFF .....

RAD1
Antenna Ex .....
Mode LIS(2,3) .....
SUM/SEP SUM .....
Toggle OFF .....

TNR
Antenna ExEy .....
Mode A-32 .....
Sweep ACE .....
  
```