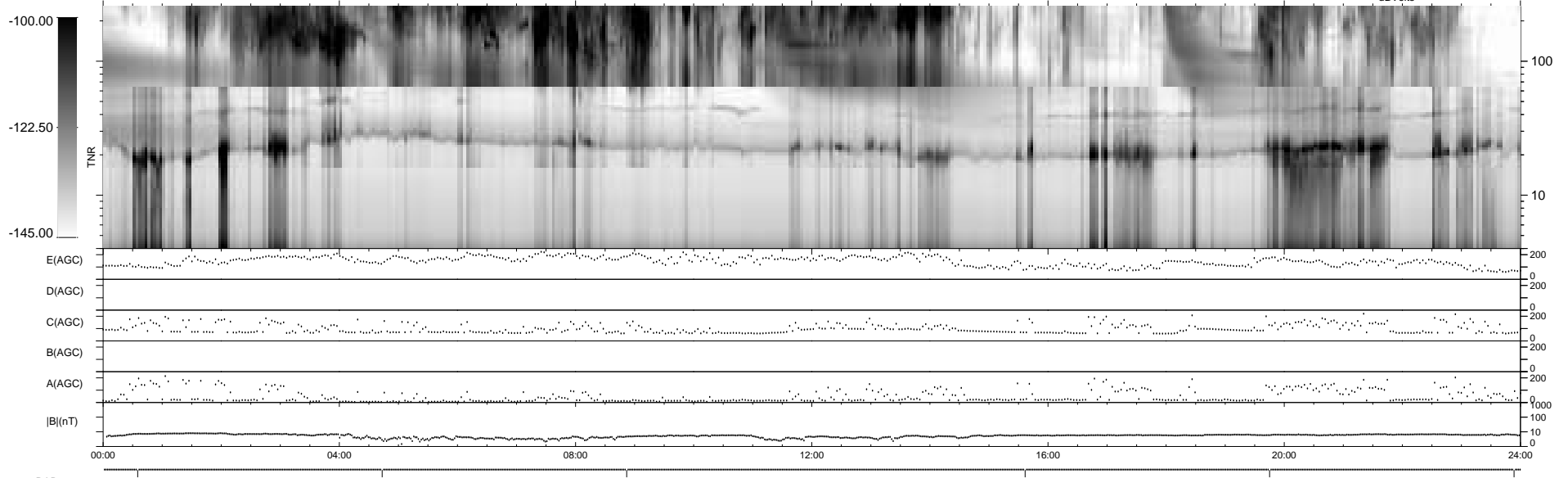
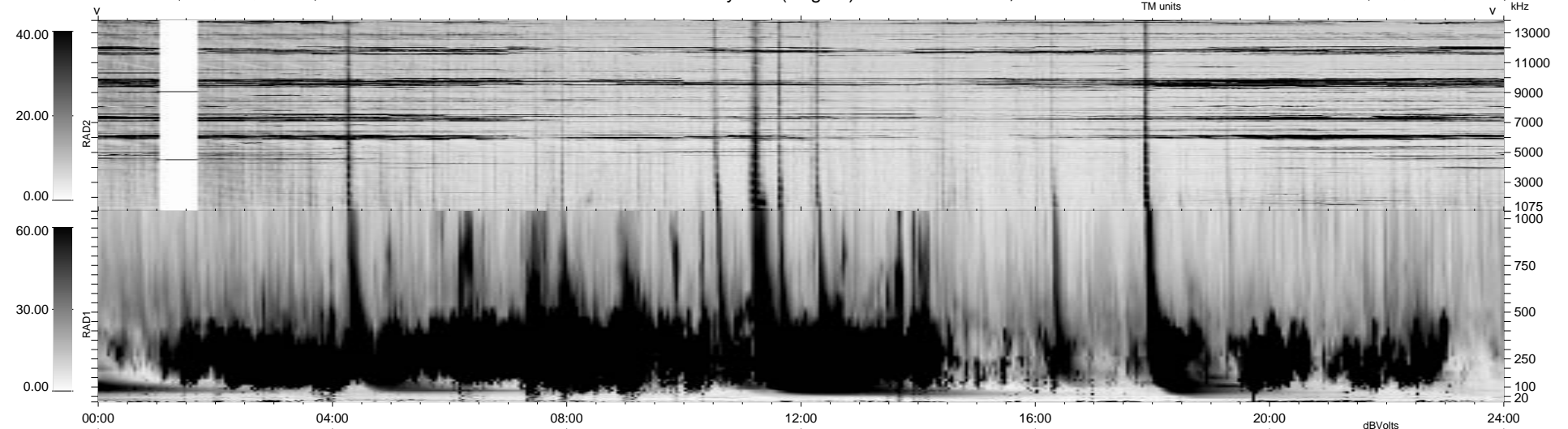


6 bad + 933 good MF/939MF projected (99%) - 0 missing MFs
 Avg interval = 180 secs
 Re = - 58.20 (-29.01, -49.64, -9.03 GSE)

1.7d VMS-SunOS LZ version = v01
 DAILY Tue Sep 16, 2008
 Re = 63.64 (-26.08, -57.79, -5.47 GSE)

WIND/WAVES Summary Plot (Page 1) for 19-NOV-1999, DOY = 323



```

RAD2
Antenna Ey .....
Mode LIN(1) ..... LIS(8.11) LIN(1) .....
SUM/SEP SEP .....
Toggle OFF .....

RAD1
Antenna Ex .....
Mode LIS(2.8) .....
SUM/SEP SUM .....
Toggle OFF .....

TNR
Antenna ExEy .....
Mode A-32 .....
Sweep ACE .....
  
```