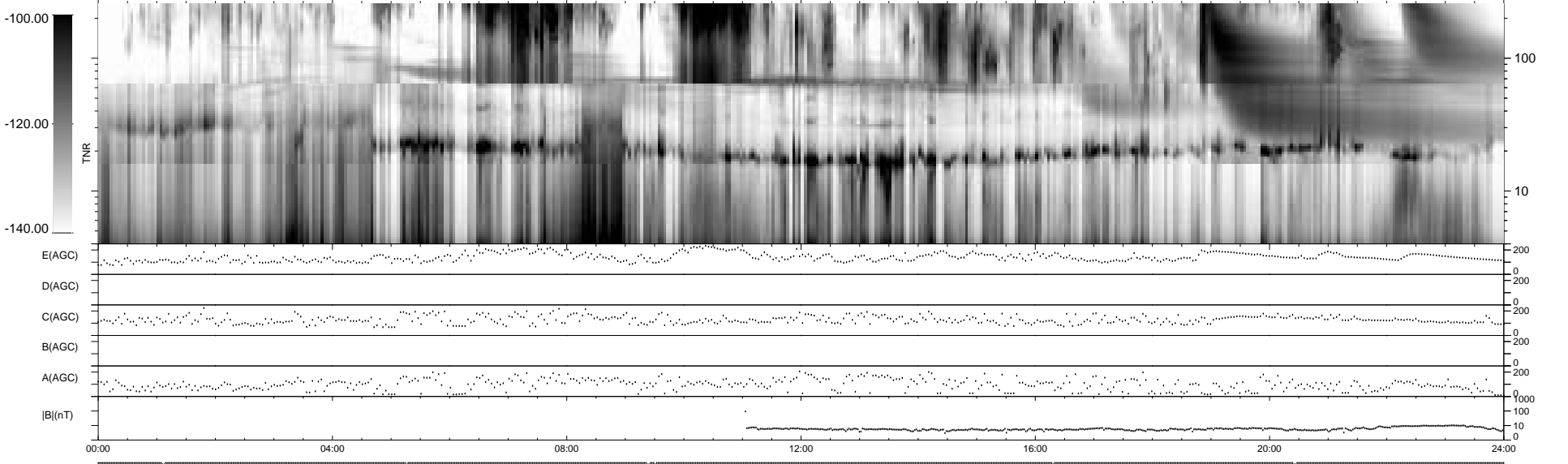
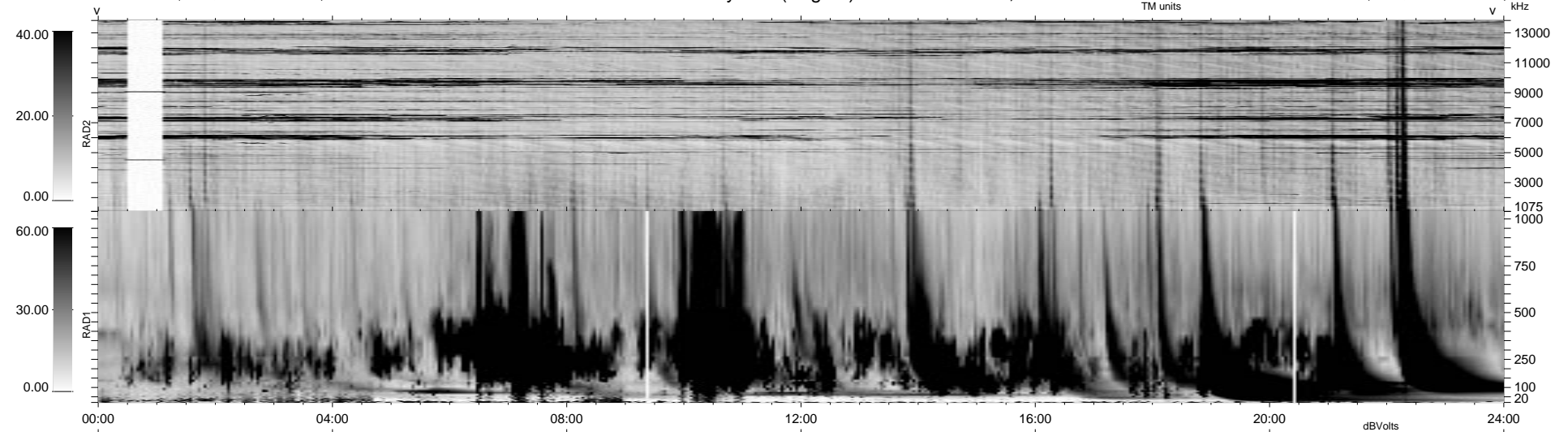


9 bad + 931 good MF/940MF projected (99%) - 0 missing MFs
 Avg interval = 180 secs
 Re = 50.74 (-30.59, -38.64, -12.06 GSE)

1.7d VMS-SunOS LZ version = v01
 DAILY Tue Sep 16, 2008
 Re = 58.16 (-29.03, -49.57, -9.05 GSE)

WIND/WAVES Summary Plot (Page 1) for 18-NOV-1999, DOY = 322



```

RAD2
Antenna  Ey .....
Mode     LIN(1) LIS(8,11)LIN(1) .....
SUM/SEP  SEP .....
Toggle   OFF .....

RAD1
Antenna  Ex .....
Mode     LIS(2,3) .....
SUM/SEP  SUM .....
Toggle   OFF .....

TNR
Antenna  ExEy .....
Mode     A-32 .....
Sweep    ACE .....
  
```