

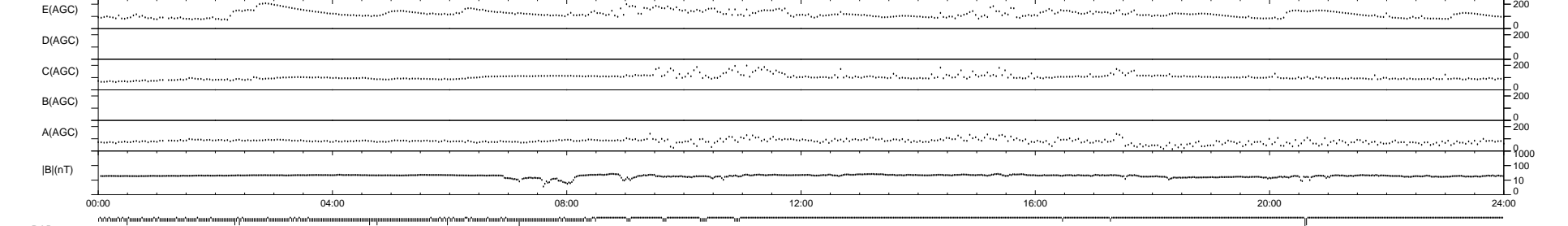
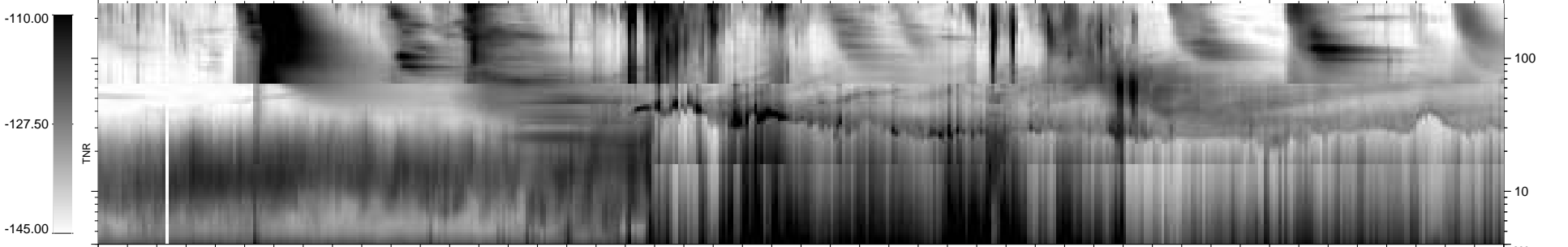
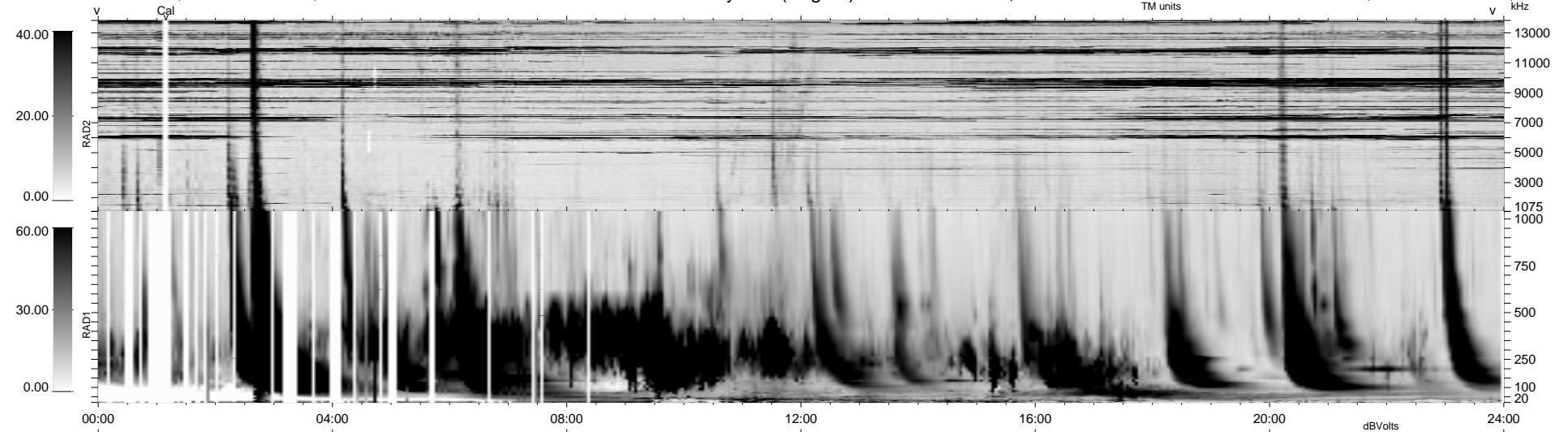
316 bad + 623 good MF/939MF projected (66%) - 0 missing MFs
 Avg interval = 180 secs
 Re = 28.32 (-24.31, -5.85, -13.31 GSE)

1.7d VMS-SunOS

LZ version = v02

WIND/WAVES Summary Plot (Page 1) for 16-NOV-1999, DOY = 320

DAILY Tue Sep 16, 2008
 Re = 40.84 (-29.81, -24.16, -13.98 GSE)



```

RAD2
Antenna Ey .....
Mode LIN(1) .....
SUM/SEP SEP .....
Toggle OFF .....

RAD1
Antenna Ex .....
Mode LIS(2,3) .....
SUM/SEP SUM .....
Toggle OFF .....

TNR
Antenna ExEy .....
Mode A-32 .....
Sweep ACE .....
  
```