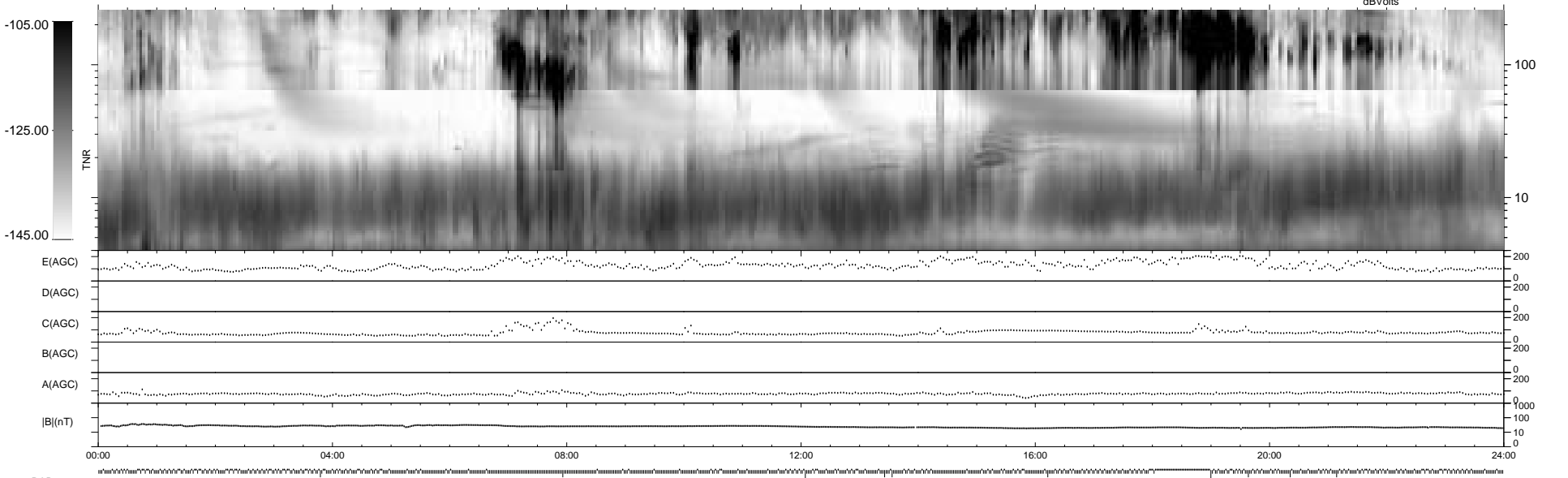
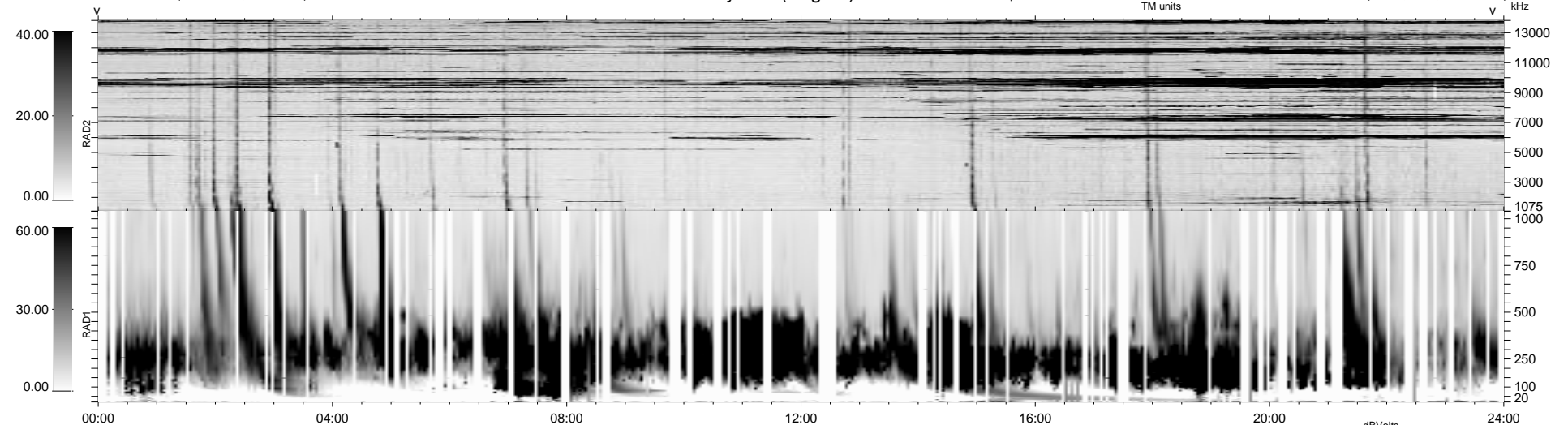


700 bad + 239 good MF/939MF projected (25%) - 0 missing MFs
 Avg interval = 180 secs
 Re = 15.29 (-6.03, 13.17, -4.92 GSE)

1.7d VMS-SunOS LZ version = v02
 DAILY Tue Sep 16, 2008
 Re = 28.22 (-24.24, -5.71, -13.28 GSE)

WIND/WAVES Summary Plot (Page 1) for 15-NOV-1999, DOY = 319



RAD2
 Antenna Ey
 Mode LIN(1)
 SUM/SEP SEP
 Toggle OFF
 RAD1
 Antenna
 Mode
 SUM/SEP
 Toggle
 TNR
 Antenna ExEy
 Mode A-32
 Sweep ACE