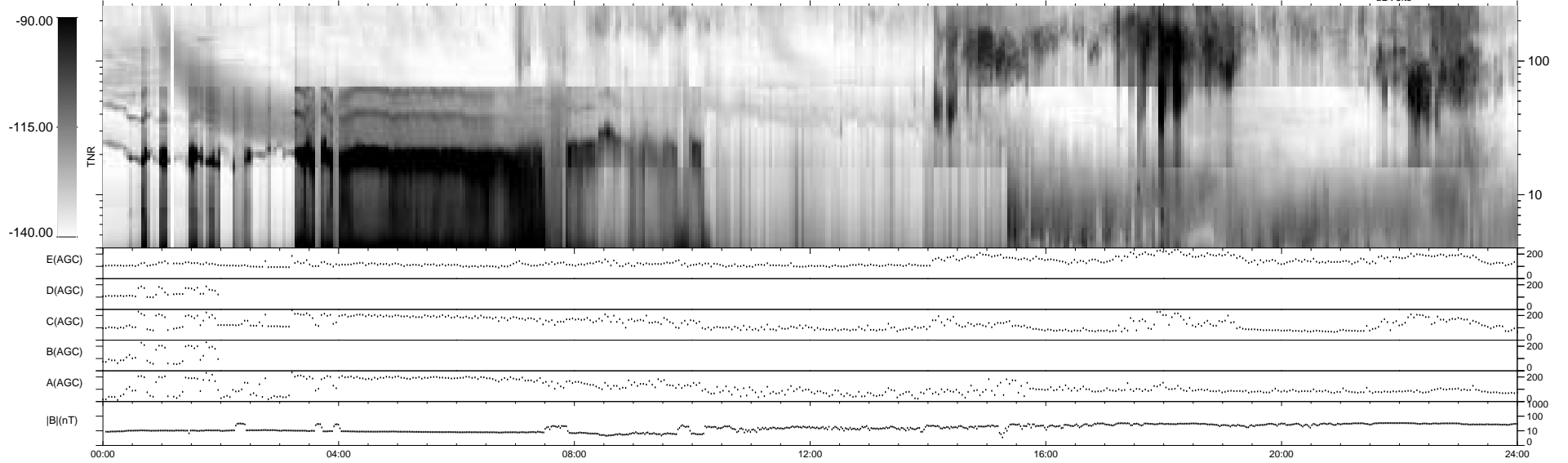
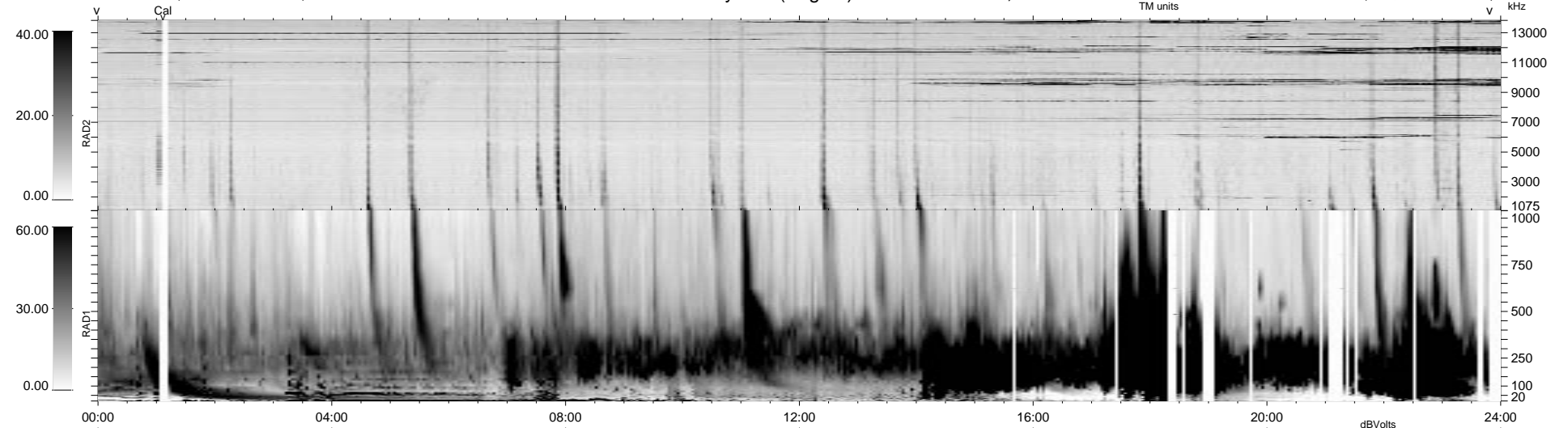


141 bad + 798 good MF/939MF projected (84%) - 0 missing MFs
 Avg interval = 180 secs
 Re = 21.94 (18.92, 3.00, 10.68 GSE)

1.7d VMS-SunOS LZ version = v02

WIND/WAVES Summary Plot (Page 1) for 14-NOV-1999, DOY = 318

DAILY Tue Sep 16, 2008
 Re = 15.24 (-5.83, 13.24, -4.81 GSE)



RAD2
 Antenna Ey
 Mode LIN(1)
 SUM/SEP SEP
 Toggle OFF

RAD1
 Antenna Ex
 Mode LIS(2,3)
 SUM/SEP SUM
 Toggle OFF

TNR
 Antenna ExEy
 Mode A-32
 Sweep ABCDE ACE