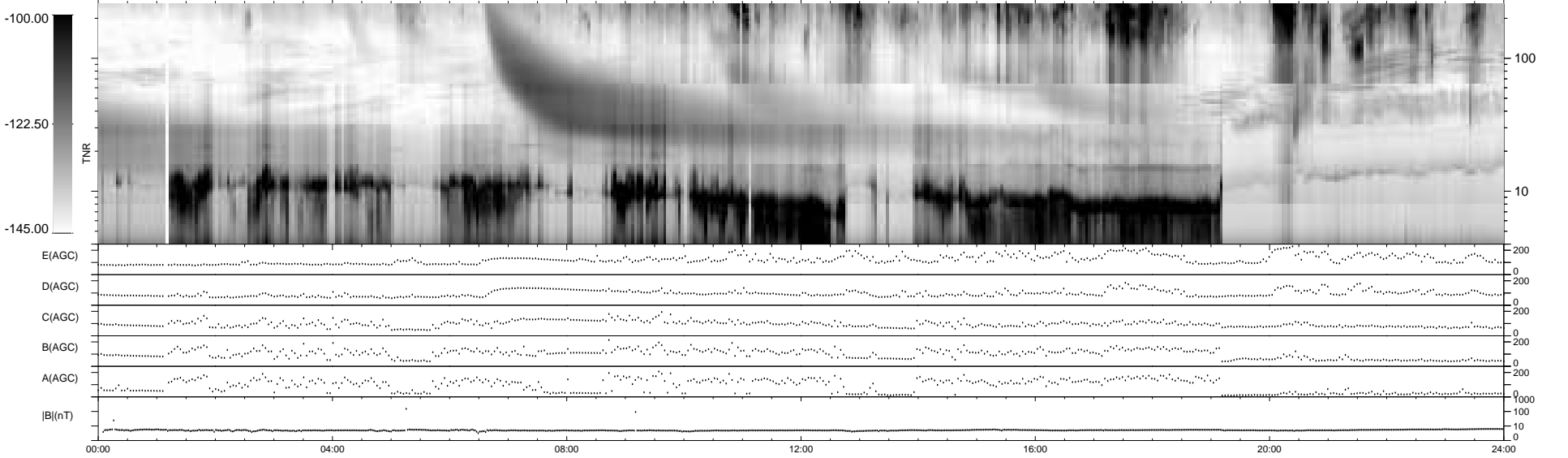
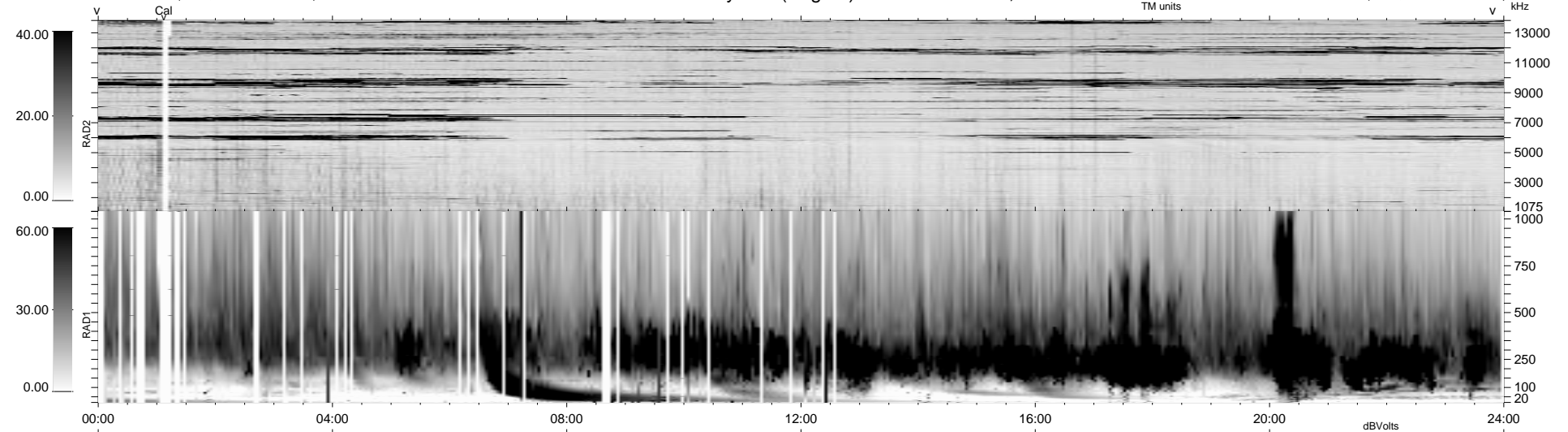


161 bad + 778 good MF/939MF projected (82%) - 0 missing MFs
 Avg interval = 180 secs
 Re = - 46.63 (26.78, -33.54, 18.22 GSE)

1.7d VMS-SunOS LZ version = v01
 DAILY Tue Sep 16, 2008
 Re = 35.72 (26.25, -17.44, 16.81 GSE)

WIND/WAVES Summary Plot (Page 1) for 12-NOV-1999, DOY = 316



RAD2 Antenna Ey
 Mode LIN(1)
 SUM/SEP SEP
 Toggle OFF
 RAD1 Antenna
 Mode
 SUM/SEP
 Toggle
 TNR Antenna ExEy
 Mode A-32
 Sweep ABCDE