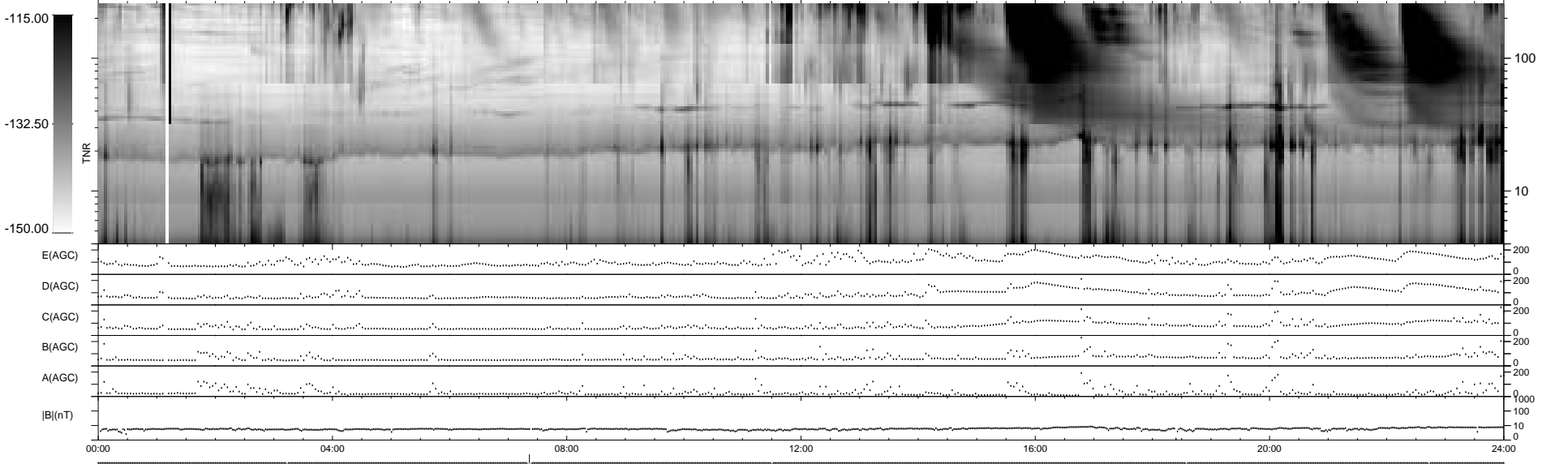
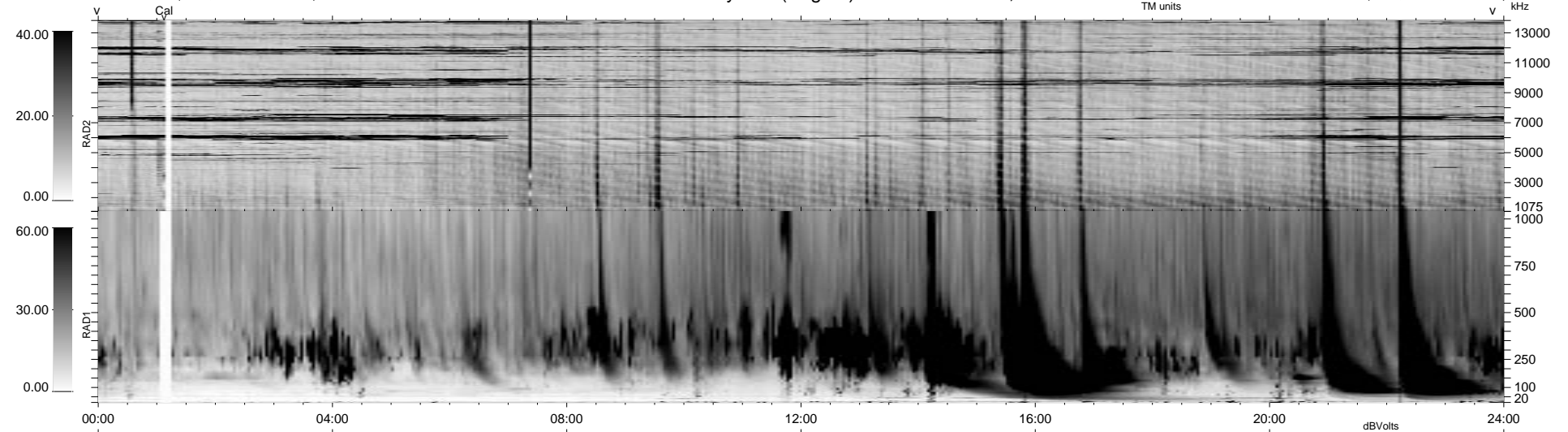


6 bad + 933 good MF/940MF projected (99%) - 1 missing MF  
 Avg interval = 180 secs  
 Re = 61.25 (21.11, -55.37, 15.49 GSE)

1.7d VMS-SunOS LZ version = v01  
 DAILY Tue Sep 16, 2008  
 Re = 55.07 (24.61, -46.07, 17.47 GSE)

WIND/WAVES Summary Plot (Page 1) for 10-NOV-1999, DOY = 314



RAD2  
 Antenna Ey .....  
 Mode LIN(1) .....  
 SUM/SEP SEP .....  
 Toggle OFF .....  
 RAD1  
 Antenna Ex .....  
 Mode LIS(2,3) .....  
 SUM/SEP SUM .....  
 Toggle OFF .....  
 TNR  
 Antenna ExEy .....  
 Mode A-32 .....  
 Sweep ABCDE .....