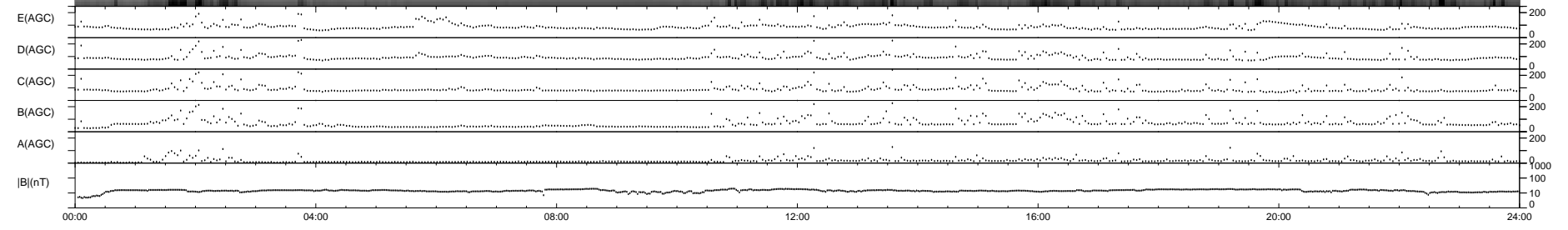
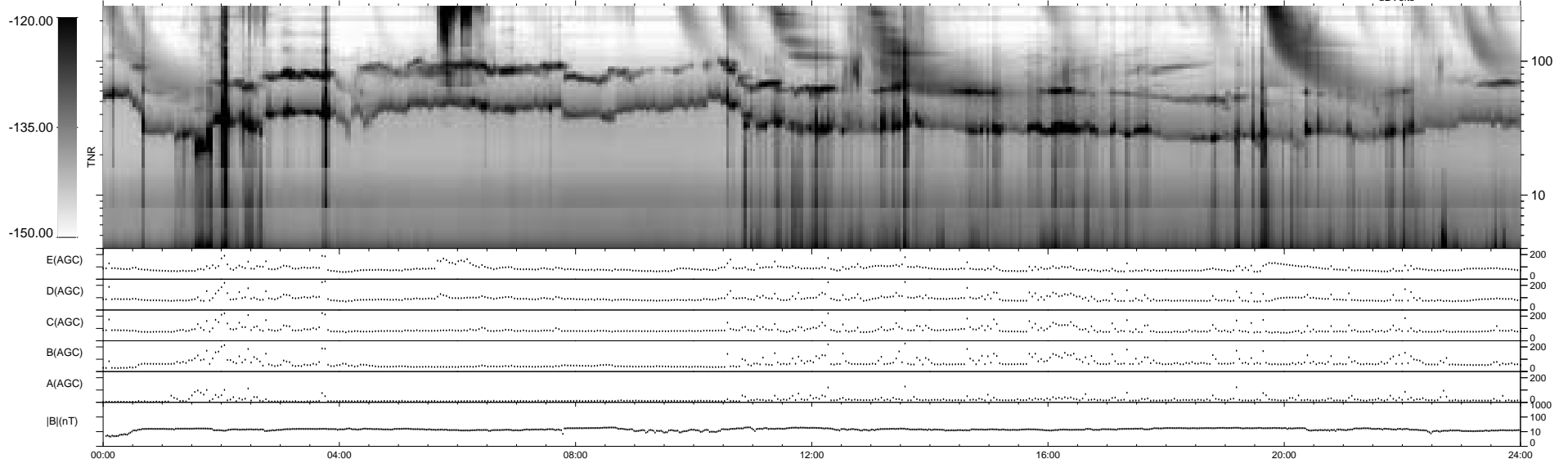
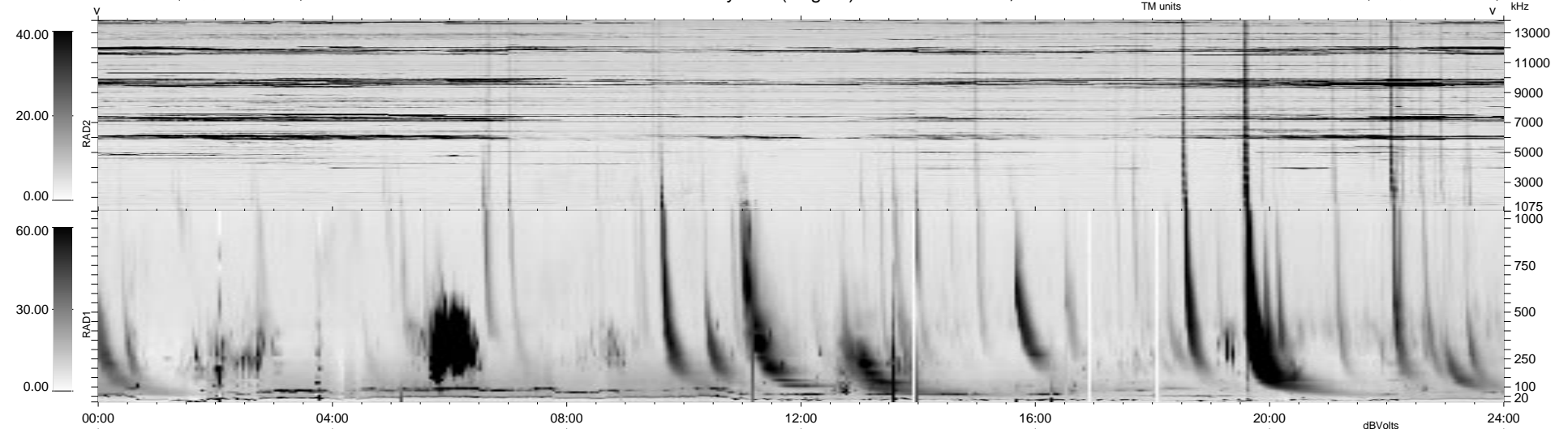


14 bad + 925 good MF/939MF projected (98%) - 0 missing MFs  
 Avg interval = 180 secs  
 Re = - 69.11 (6.80, -68.54, 5.72 GSE)

1.7d VMS-SunOS LZ version = v01  
 DAILY Tue Sep 16, 2008  
 Re = 68.18 (11.93, -66.47, 9.36 GSE)

WIND/WAVES Summary Plot (Page 1) for 07-NOV-1999, DOY = 311



RAD2  
 Antenna Ey  
 Mode LIN(1)  
 SUM/SEP SEP  
 Toggle OFF

RAD1  
 Antenna Ex  
 Mode LIS(2,3)  
 SUM/SEP SUM  
 Toggle OFF

TNR  
 Antenna ExEy  
 Mode A-32  
 Sweep ABCDE