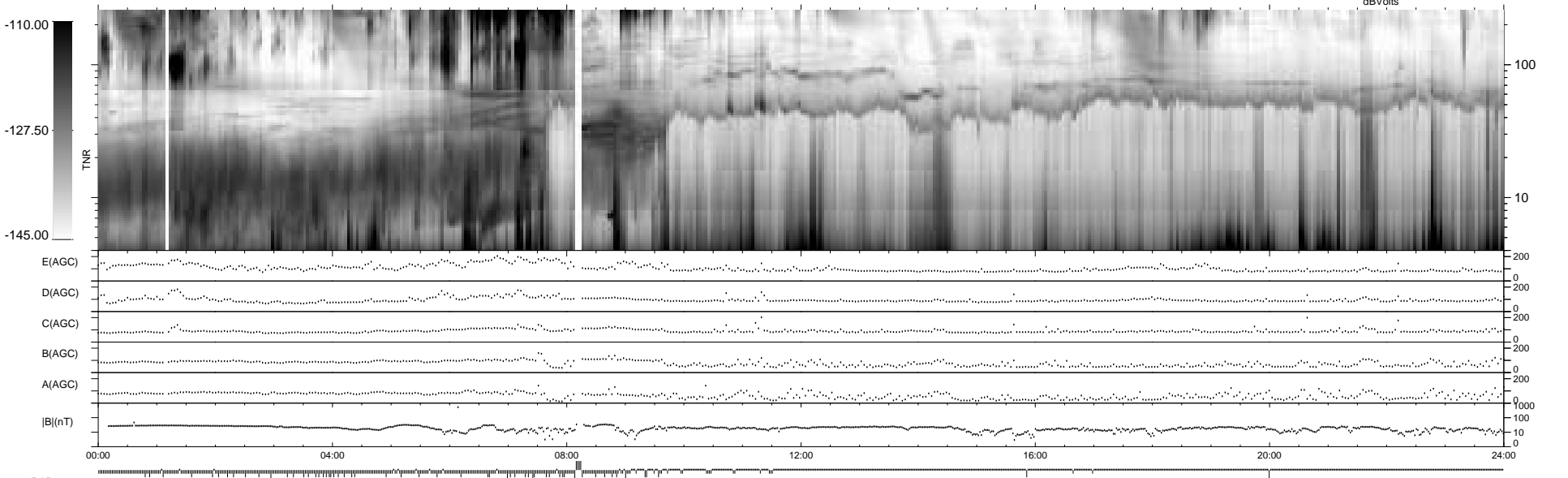
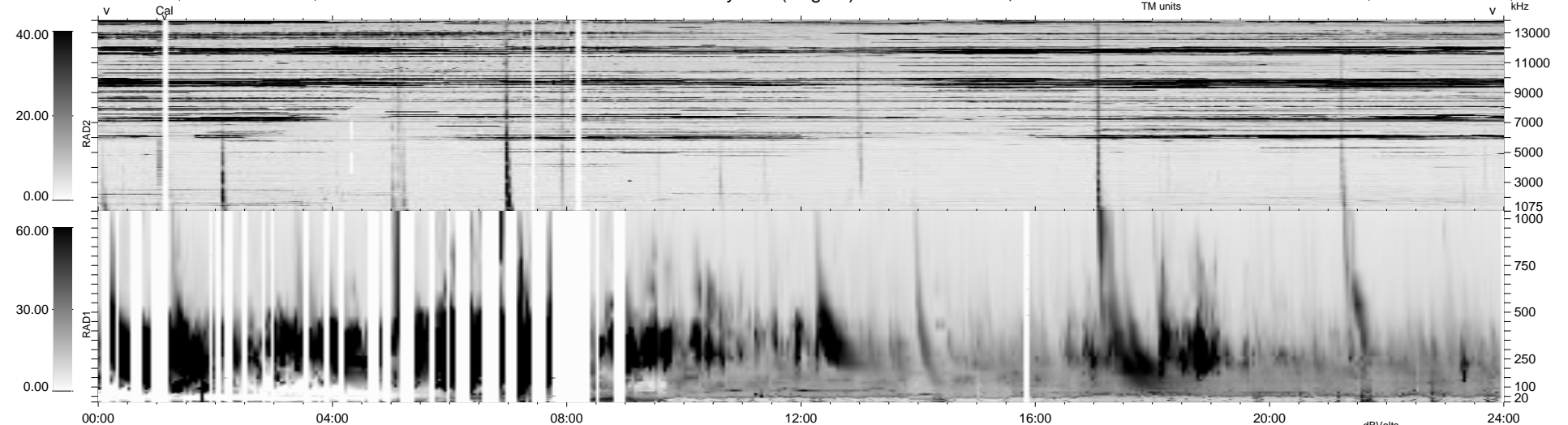


364 bad + 571 good MF/939MF projected (60%) - 4 missing MFs
 Avg interval = 180 secs
 Re = 24.04 (-19.98, -5.95, -11.97 GSE)

1.7d VMS-SunOS LZ version = v02
 DAILY Tue Sep 16, 2008
 Re = 37.33 (-21.98, -26.80, -13.87 GSE)

WIND/WAVES Summary Plot (Page 1) for 31-OCT-1999, DOY = 304



RAD2
 Antenna Ey
 Mode LIN(1)
 SUM/SEP SEP
 Toggle OFF

RAD1
 Antenna Ex
 Mode LIS(2,3)
 SUM/SEP SUM
 Toggle OFF

TNR
 Antenna ExEy
 Mode A-32
 Sweep ABCDE