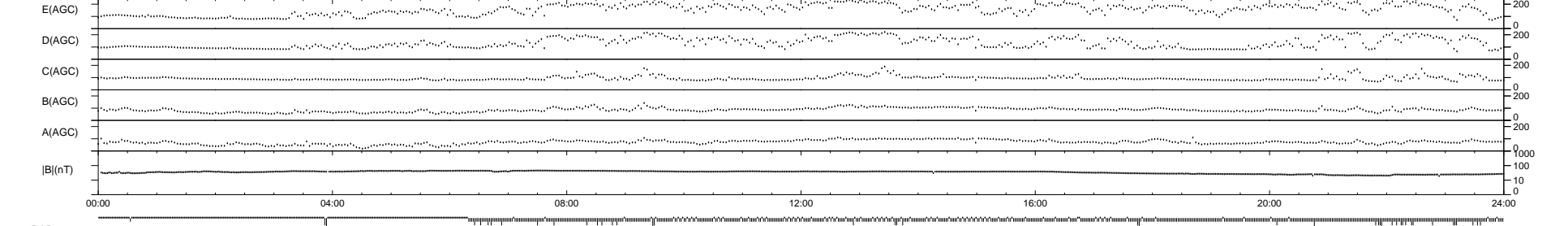
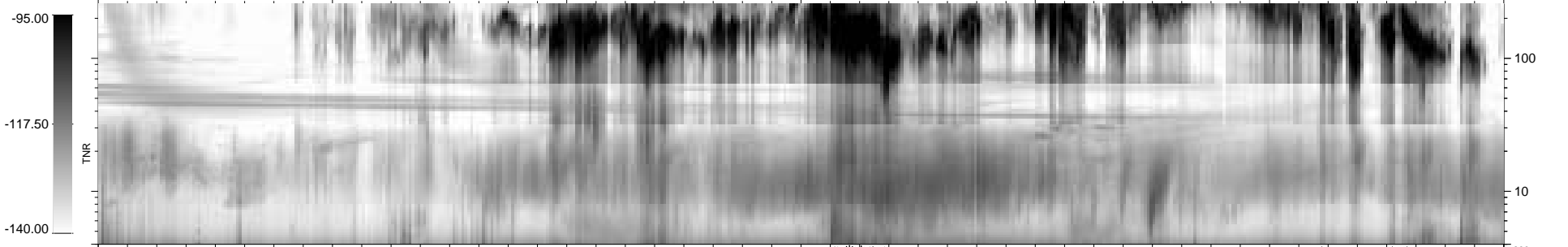
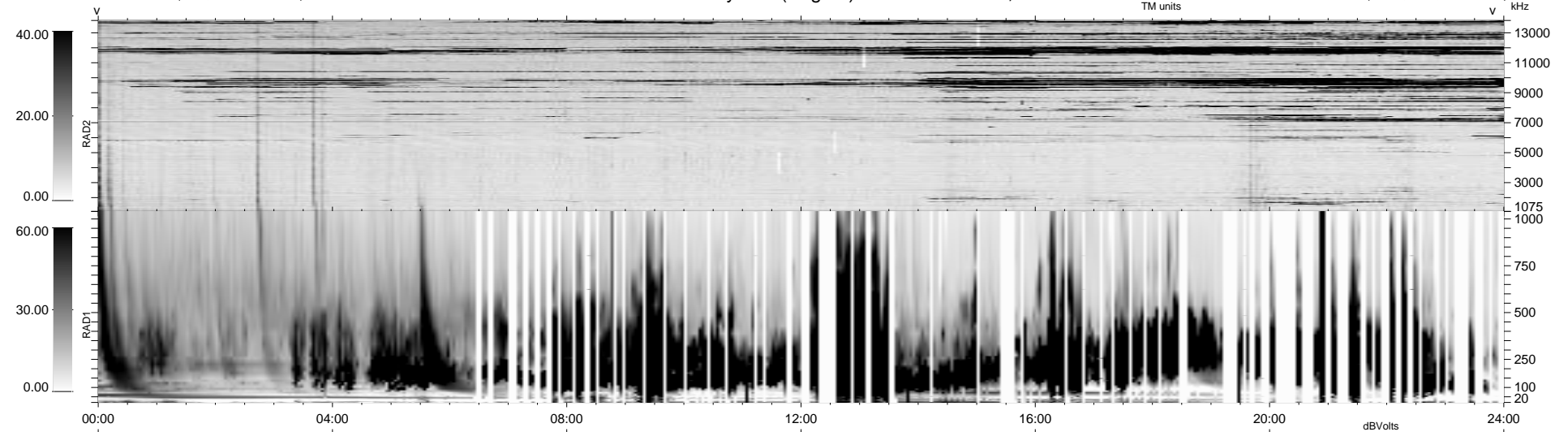


622 bad + 317 good MF/939MF projected (33%) - 0 missing MFs
Avg interval = 180 secs
Re = 14.44 (-0.78, 14.42, 0.38 GSE)

1.7d VMS-SunOS LZ version = v02
DAILY Tue Sep 16, 2008
Re = 23.84 (-19.88, -5.61, -11.90 GSE)

WIND/WAVES Summary Plot (Page 1) for 30-OCT-1999, DOY = 303



RAD2
Antenna Ey
Mode LIN(1)
SUM/SEP SEP
Toggle OFF
RAD1
Antenna Ex
Mode LIS(2,3)
SUM/SEP SUM
Toggle OFF
TNR
Antenna ExEy
Mode A-32
Sweep ABCDE