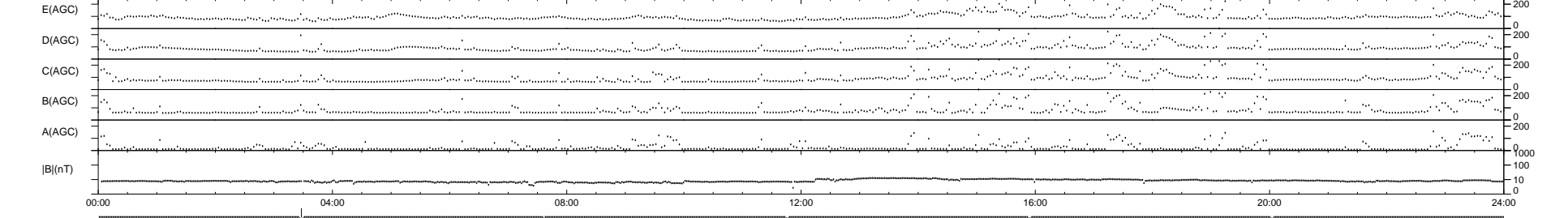
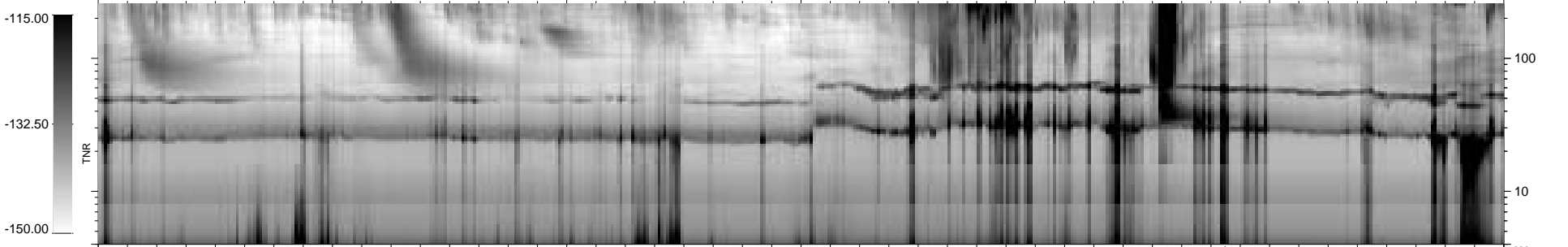
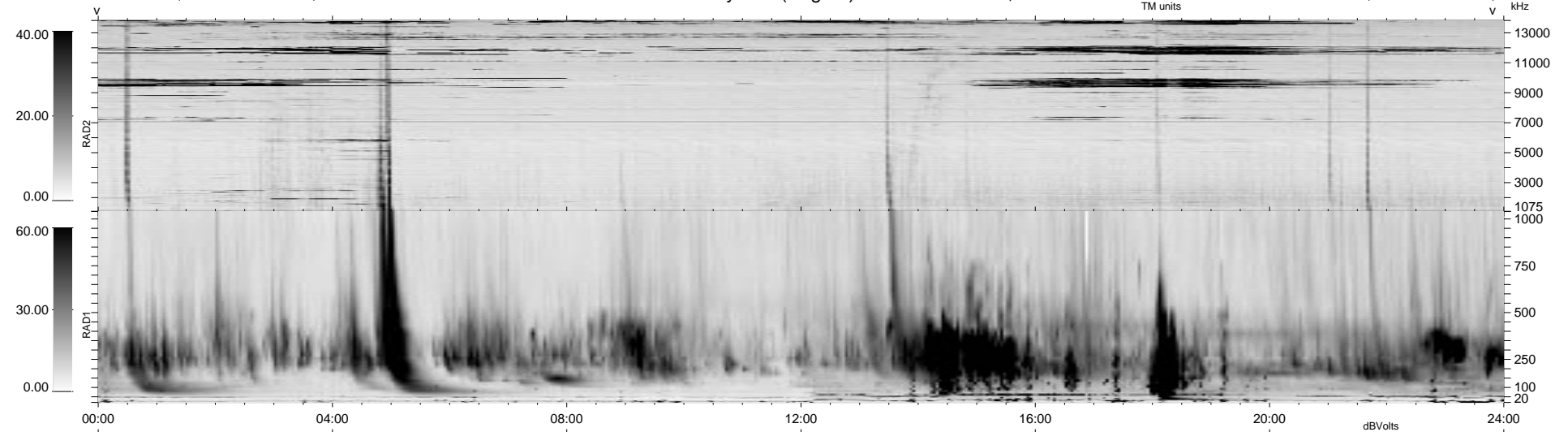


9 bad + 929 good MF/939MF projected (98%) - 1 missing MF
 Avg interval = 180 secs
 Re = 39.46 (32.33, -14.10, 17.68 GSE)

1.7d VMS-SunOS LZ version = v01

WIND/WAVES Summary Plot (Page 1) for 28-OCT-1999, DOY = 301

DAILY Tue Sep 16, 2008
 Re = 26.49 (22.67, 2.83, 13.41 GSE)



```

RAD2
Antenna Ey .....
Mode LIN(1) .....
SUM/SEP SEP .....
Toggle OFF .....

RAD1
Antenna Ex .....
Mode LIS(2,3) .....
SUM/SEP SUM .....
Toggle OFF .....

TNR
Antenna ExEy .....
Mode A-32 .....
Sweep ABCDE .....
  
```