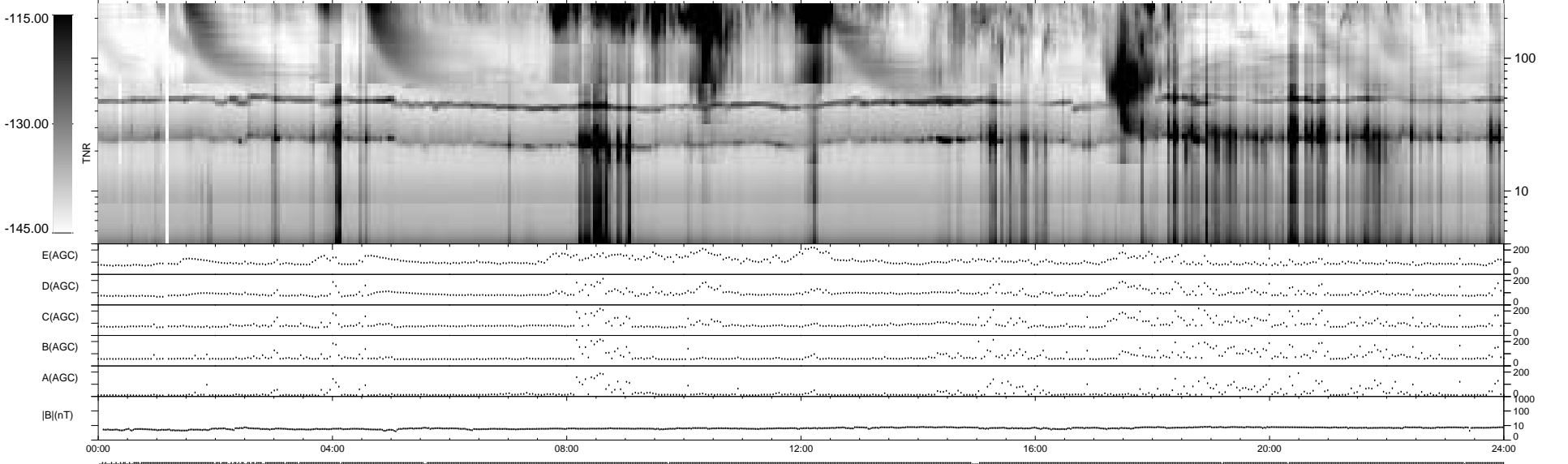
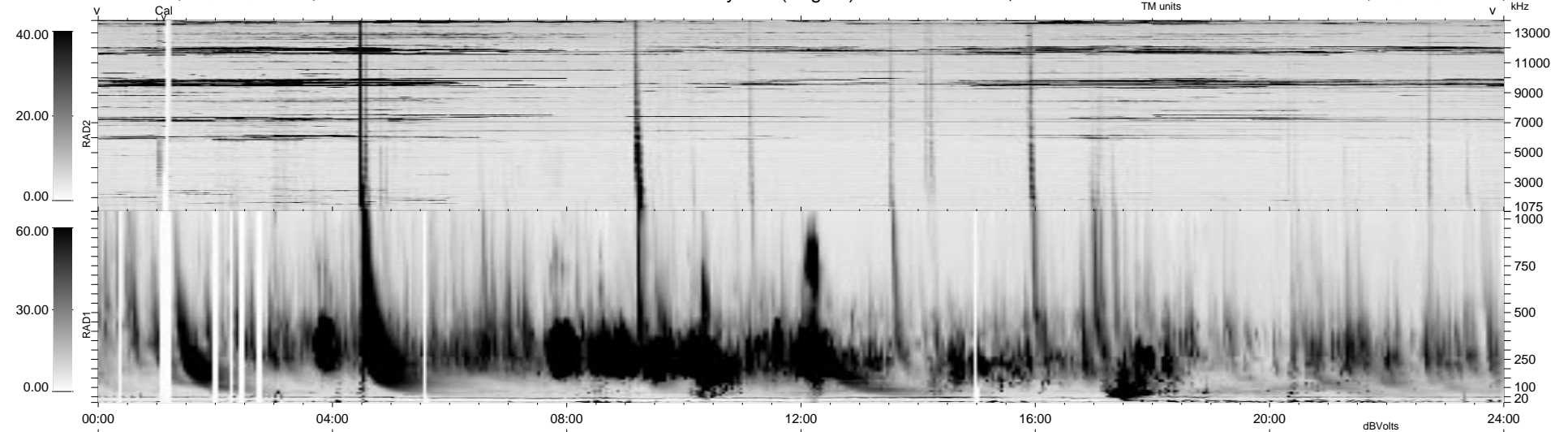


43 bad + 896 good MF/939MF projected (95%) - 0 missing MFs
 Avg interval = 180 secs
 Re = 49.67 (36.24, -28.53, 18.44 GSE)

1.7d VMS-SunOS LZ version = v01
 DAILY Tue Sep 16, 2008
 Re = 39.54 (32.38, -14.21, 17.70 GSE)

WIND/WAVES Summary Plot (Page 1) for 27-OCT-1999, DOY = 300



RAD2
 Antenna Ey
 Mode LIN(1)
 SUM/SEP SEP
 Toggle OFF

RAD1
 Antenna Ex
 Mode LIS(2,3)
 SUM/SEP SUM
 Toggle OFF

TNR
 Antenna ExEy
 Mode A-32
 Sweep ABCDE