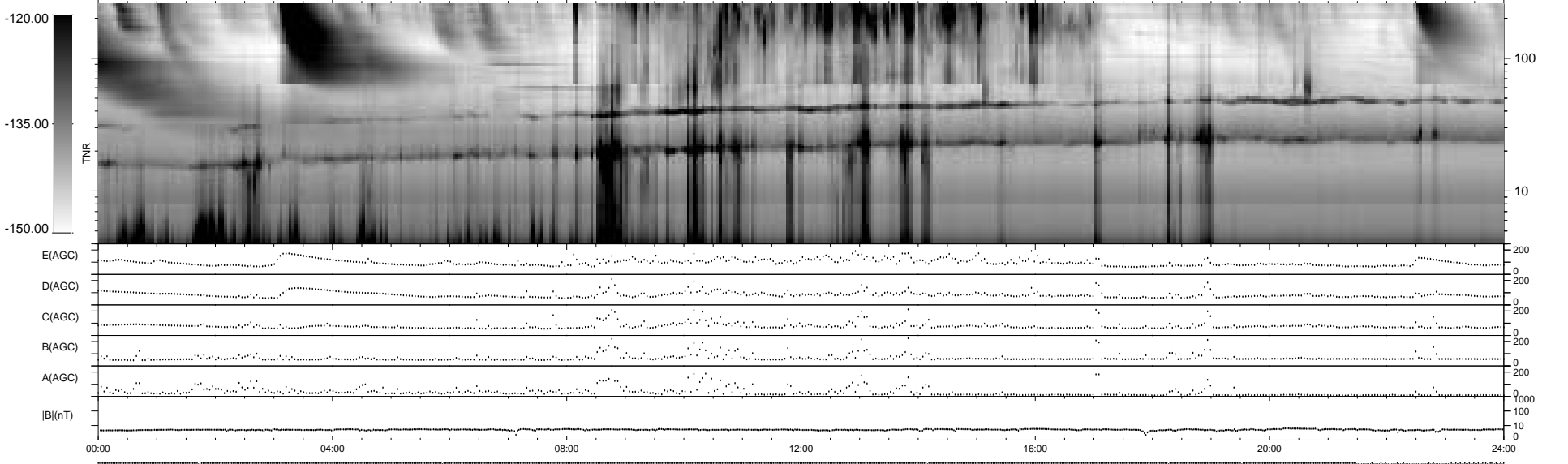
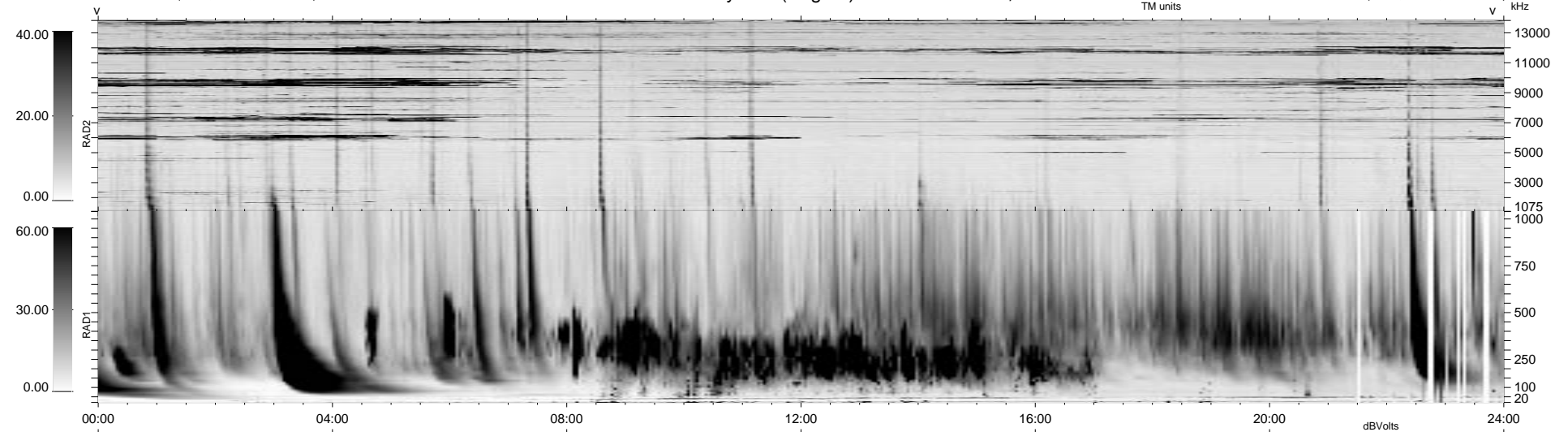


85 bad + 855 good MF/940MF projected (90%) - 0 missing MFs
 Avg interval = 180 secs
 Re = - 57.44 (37.15, -40.21, 17.39 GSE)

1.7d VMS-SunOS LZ version = v02
 DAILY Tue Sep 16, 2008
 Re = 49.73 (36.25, -28.62, 18.44 GSE)

WIND/WAVES Summary Plot (Page 1) for 26-OCT-1999, DOY = 299



```

RAD2
Antenna Ey .....
Mode LIN(1) .....
SUM/SEP SEP .....
Toggle OFF .....

RAD1
Antenna Ex .....
Mode LIS(2,3) .....
SUM/SEP SUM .....
Toggle OFF .....

TNR
Antenna ExEy .....
Mode A-32 .....
Sweep ABCDE .....
  
```