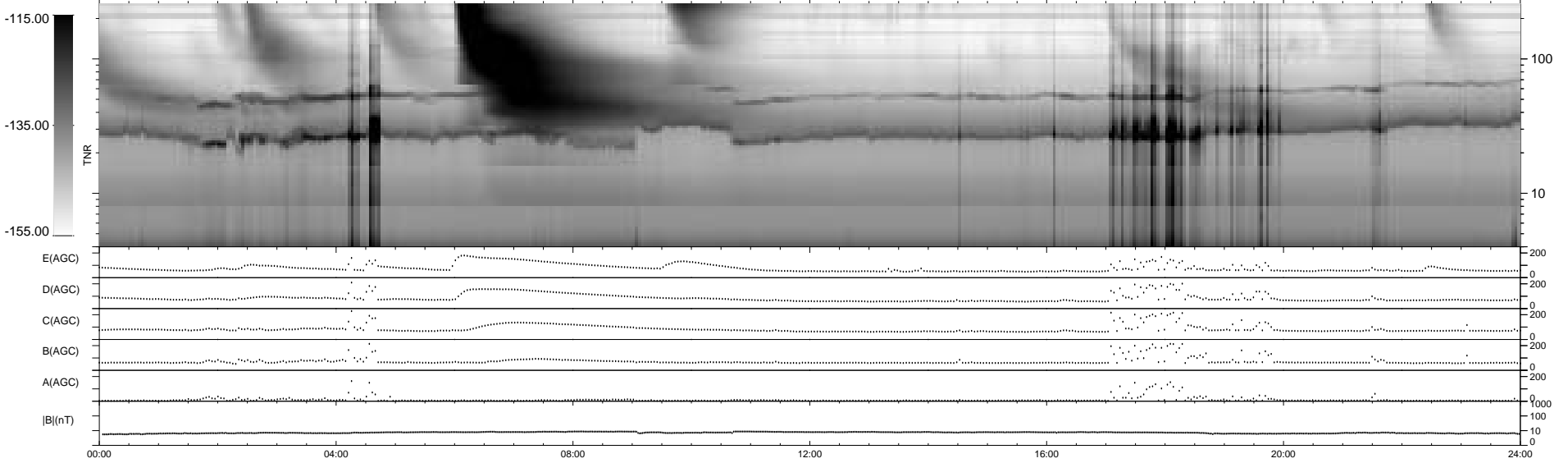
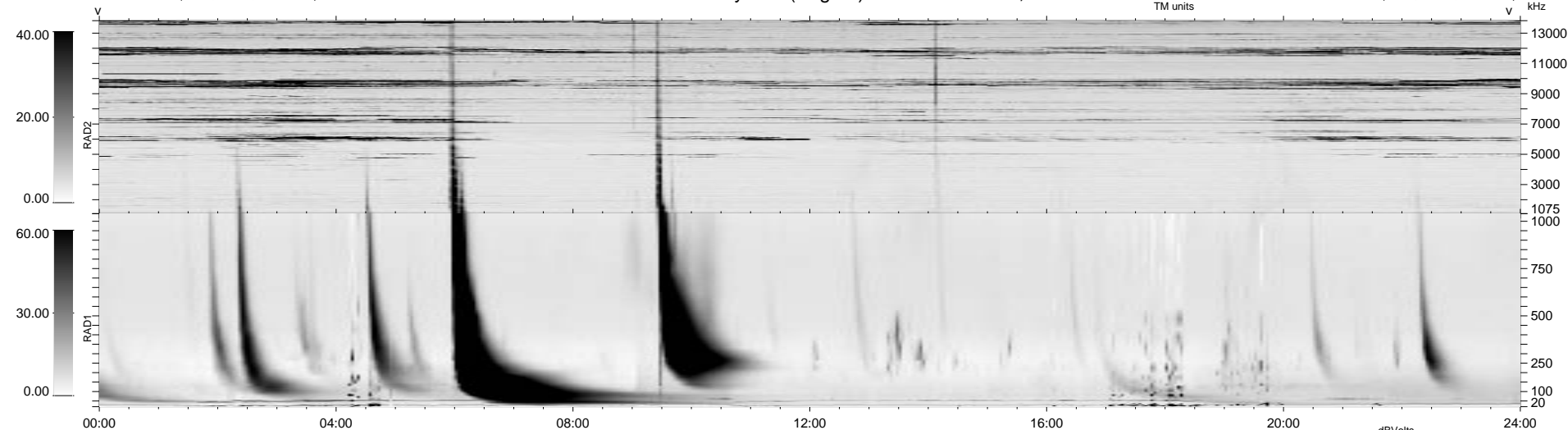


8 bad + 931 good MF/939MF projected (99%) - 0 missing MFs
 Avg interval = 180 secs
 Re = 66.22 (15.79, -64.28, -2.21 GSE)

1.7d VMS-SunOS LZ version = v01

WIND/WAVES Summary Plot (Page 1) for 20-OCT-1999, DOY = 293

DAILY Mon Sep 15, 2008
 Re = 68.83 (21.42, -65.40, 1.63 GSE)



RAD2
 Antenna Ey
 Mode LIN(1)
 SUM/SEP SEP
 Toggle OFF
 RAD1
 Antenna Ex
 Mode LIS(2,3)
 SUM/SEP SUM
 Toggle OFF
 TNR
 Antenna ExEy
 Mode A-32
 Sweep ABCDE