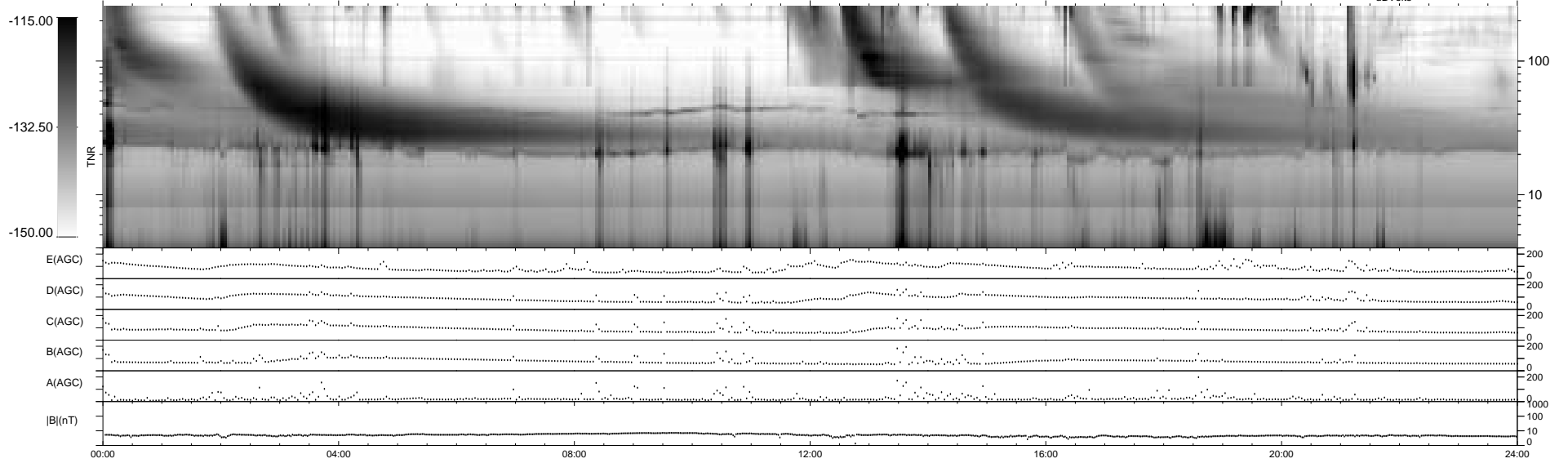
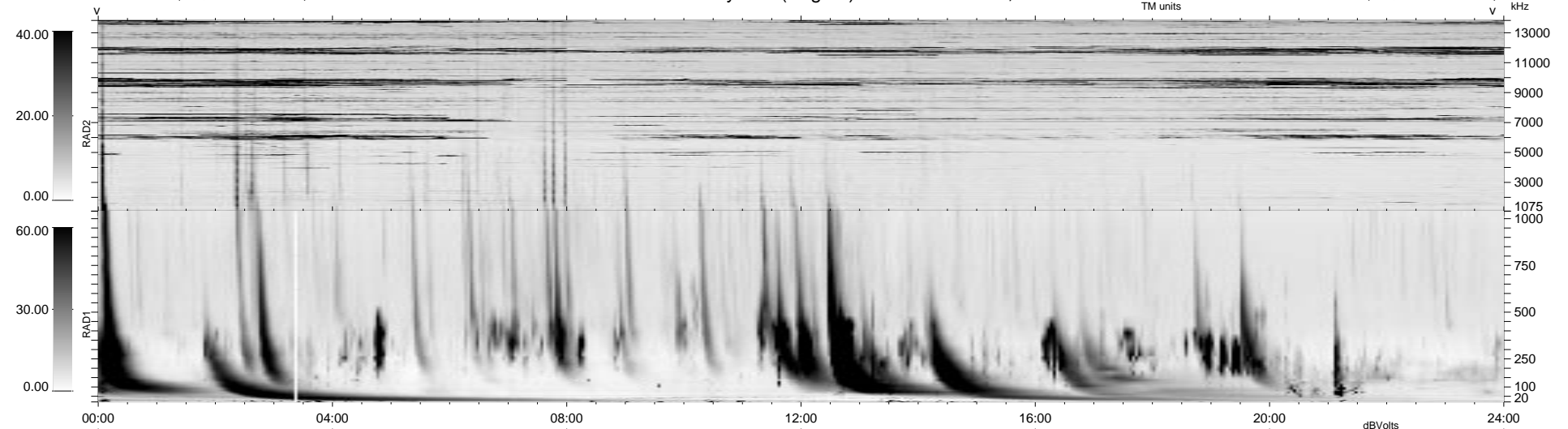


10 bad + 930 good MF/940MF projected (98%) - 0 missing MFs
 Avg interval = 180 secs
 Re = 55.56 (2.51, -54.69, -9.47 GSE)

1.7d VMS-SunOS LZ version = v01
 DAILY Mon Sep 15, 2008
 Re = 61.82 (9.40, -60.81, -6.02 GSE)

WIND/WAVES Summary Plot (Page 1) for 18-OCT-1999, DOY = 291



RAD2
 Antenna Ey
 Mode LIN(1)
 SUM/SEP SEP
 Toggle OFF

RAD1
 Antenna Ex
 Mode LIS(2,3)
 SUM/SEP SUM
 Toggle OFF

TNR
 Antenna ExEy
 Mode A-32
 Sweep ABCDE