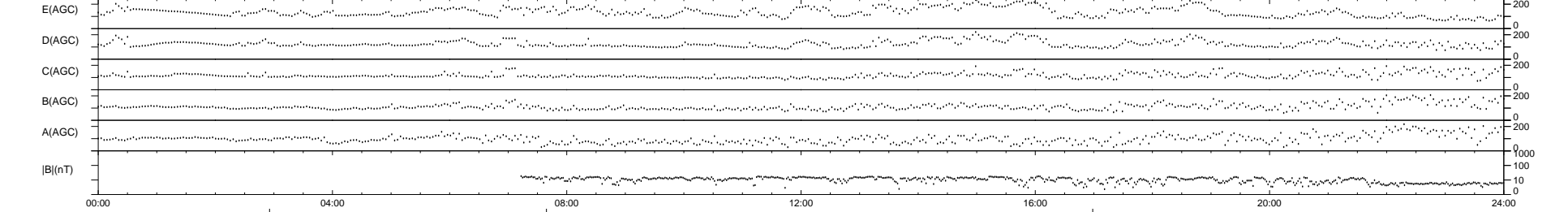
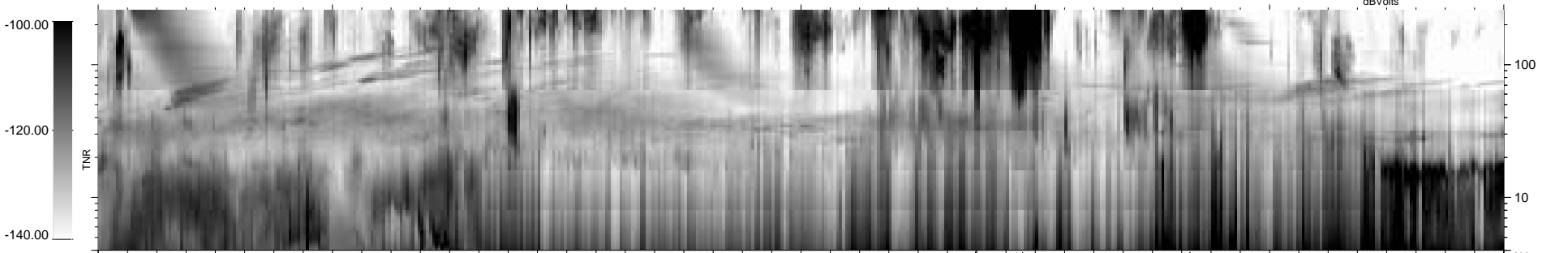
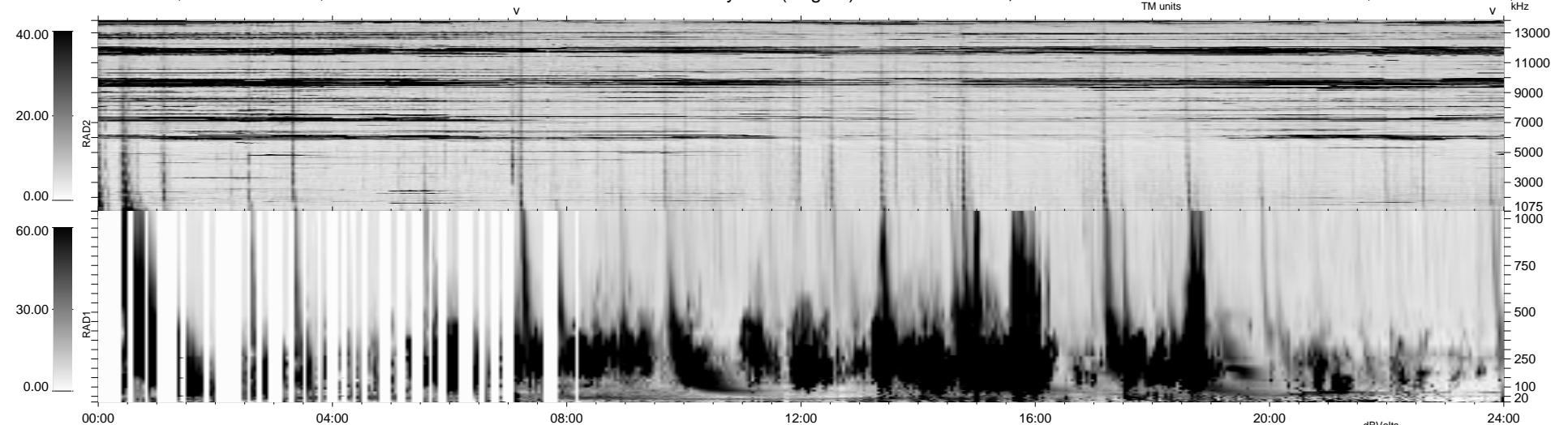


311 bad + 625 good MF/939MF projected (66%) - 3 missing MFs  
 Avg interval = 180 secs  
 Re = 25.68 (-15.46, -16.23, -12.55 GSE)

1.7d VMS-SunOS LZ version = v01

### WIND/WAVES Summary Plot (Page 1) for 15-OCT-1999, DOY = 288

DAILY Mon Sep 15, 2008  
 Re = 35.55 (-11.97, -30.57, -13.64 GSE)



```

RAD2
Antenna Ey .....
Mode LIN(1) .....
SUM/SEP SEP .....
Toggle OFF .....

RAD1
Antenna .....
Mode .....
SUM/SEP .....
Toggle .....

TNR
Antenna ExEy .....
Mode A-32 .....
Sweep ABCDE .....
  
```