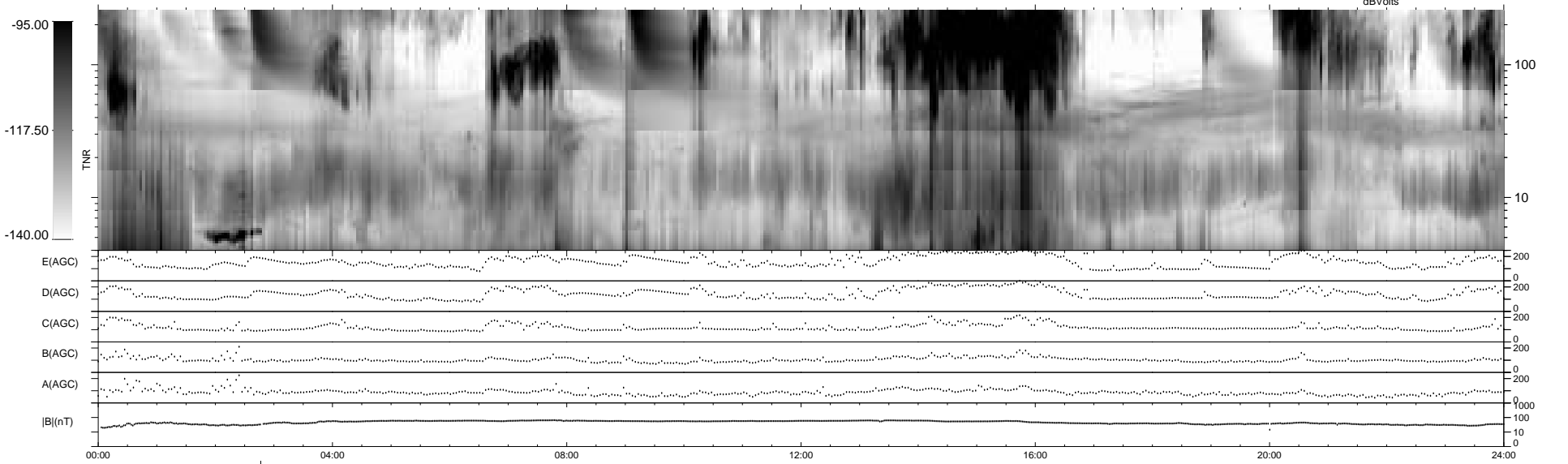
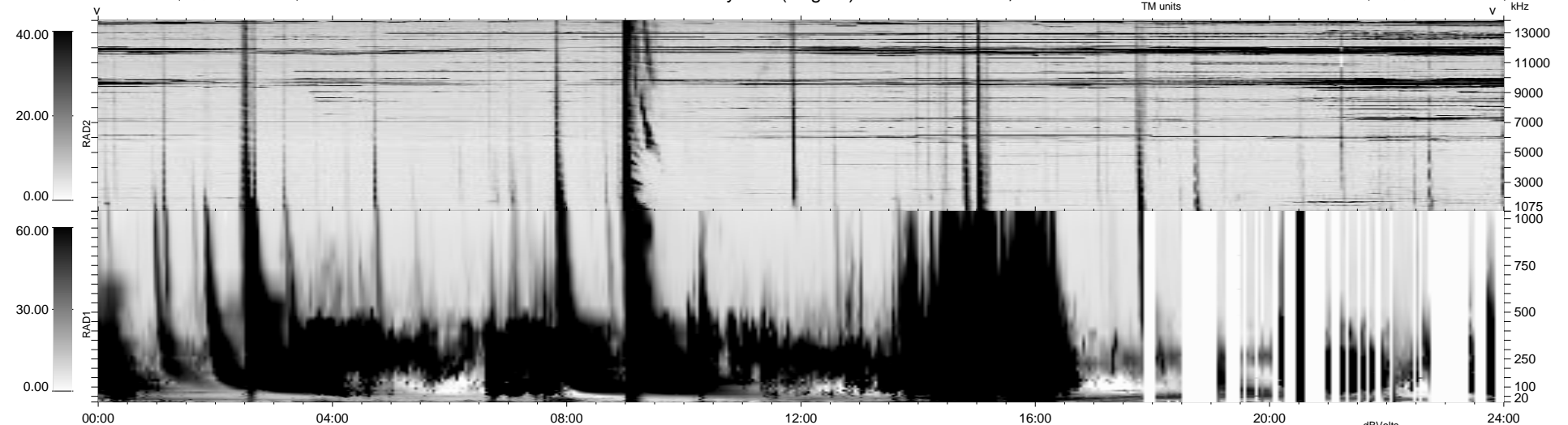


249 bad + 699 good MF/939MF projected (73%) - 1 missing MF  
 Avg interval = 180 secs  
 Re = 14.53 (1.63, 13.80, 4.25 GSE)

1.7d VMS-SunOS LZ version = v01  
 DAILY Mon Sep 15, 2008  
 Re = 20.92 (-15.76, -8.36, -10.93 GSE)

WIND/WAVES Summary Plot (Page 1) for 14-OCT-1999, DOY = 287



E(AGC) 200  
 D(AGC) 200  
 C(AGC) 200  
 B(AGC) 200  
 A(AGC) 200  
 |B|(nT) 1000  
 10  
 0

RAD2  
 Antenna Ey  
 Mode LIN(1)  
 SUM/SEP SEP  
 Toggle OFF

RAD1  
 Antenna Ex  
 Mode LIS(2,3)  
 SUM/SEP SUM  
 Toggle OFF

TNR  
 Antenna ExEy  
 Mode A-32  
 Sweep ABCDE