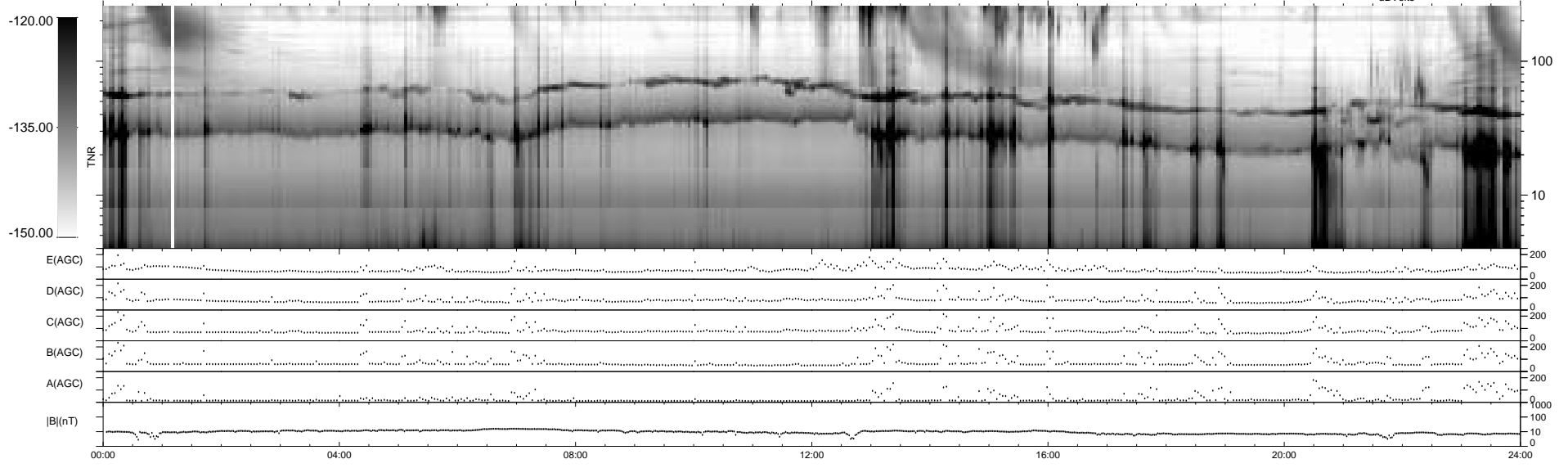
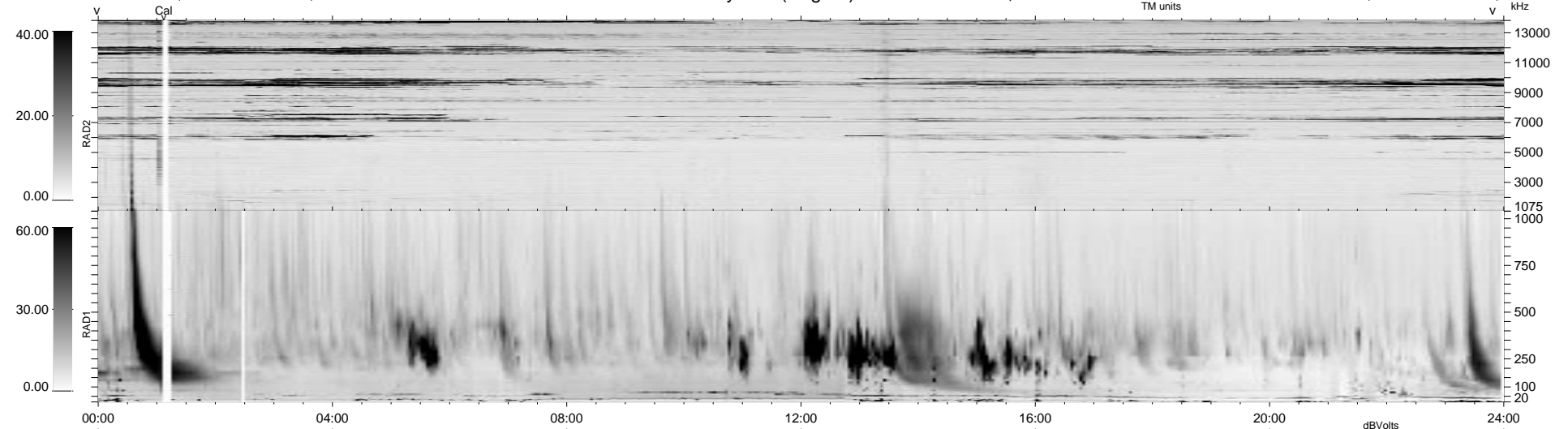


9 bad + 930 good MF/939MF projected (99%) - 0 missing MFs
 Avg interval = 180 secs
 Re = 64.85 (35.88, -54.01, -1.02 GSE)

1.7d VMS-SunOS LZ version = v01

WIND/WAVES Summary Plot (Page 1) for 05-OCT-1999, DOY = 278

DAILY Mon Sep 15, 2008
 Re = 67.88 (40.84, -54.14, 2.99 GSE)



```

RAD2
Antenna Ey .....
Mode LIN(1) .....
SUM/SEP SEP .....
Toggle OFF .....
RAD1
Antenna Ex .....
Mode LIS(2,3) .....
SUM/SEP SUM .....
Toggle OFF .....
TNR
Antenna ExEy .....
Mode A-32 .....
Sweep ABCDE .....
  
```