

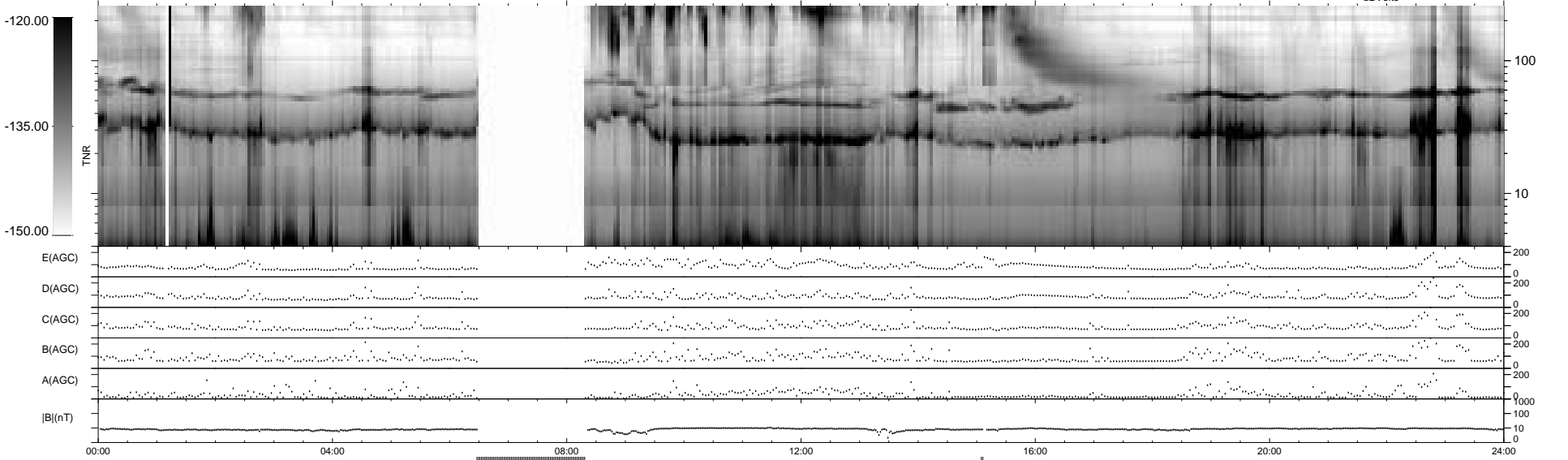
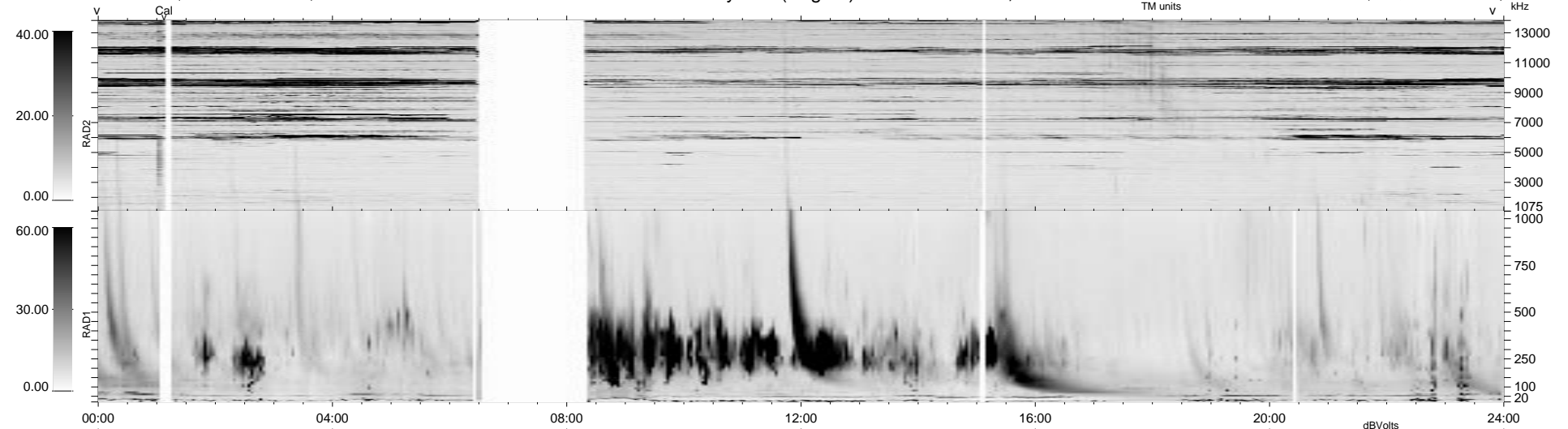
10 bad + 855 good MF/940MF projected (90%) - 75 missing MFs
 Avg interval = 180 secs
 Re = 45.35 (14.99, -42.66, -3.47 GSE)

1.7d VMS-SunOS

LZ version = v01

WIND/WAVES Summary Plot (Page 1) for 03-OCT-1999, DOY = 276

DAILY Mon Sep 15, 2008
 Re = 56.55 (27.53, -49.29, -3.28 GSE)



RAD2
 Antenna Ey
 Mode LIN(1)
 SUM/SEP SEP
 Toggle OFF
 RAD1
 Antenna Ex
 Mode LIS(2,3)
 SUM/SEP SUM
 Toggle OFF
 TNR
 Antenna ExEy
 Mode A-32
 Sweep ABCDE