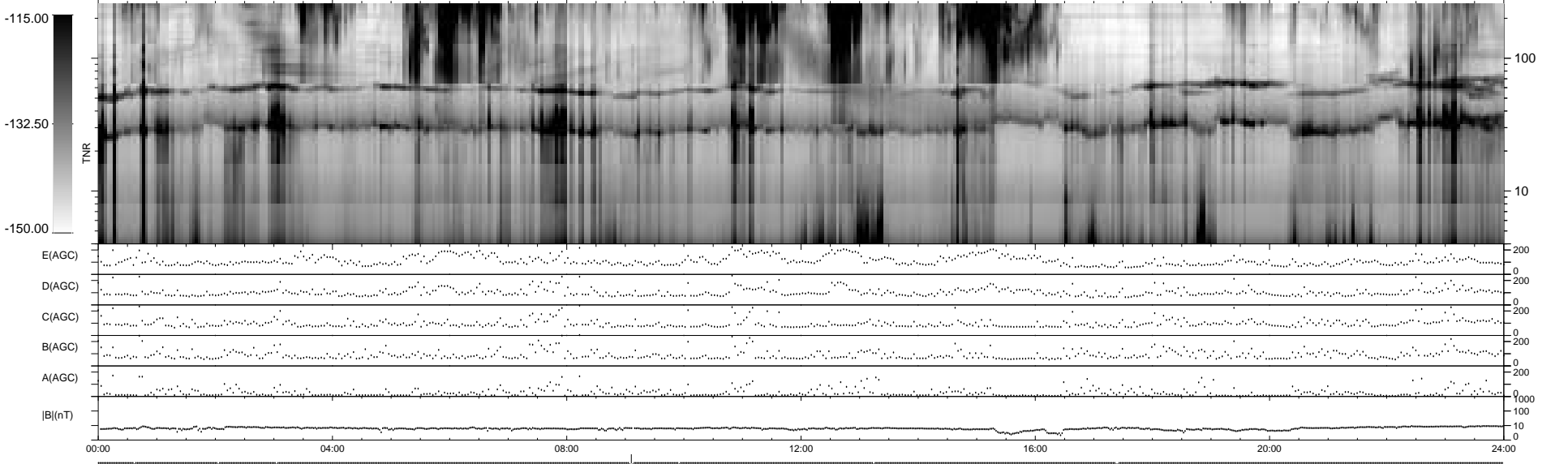
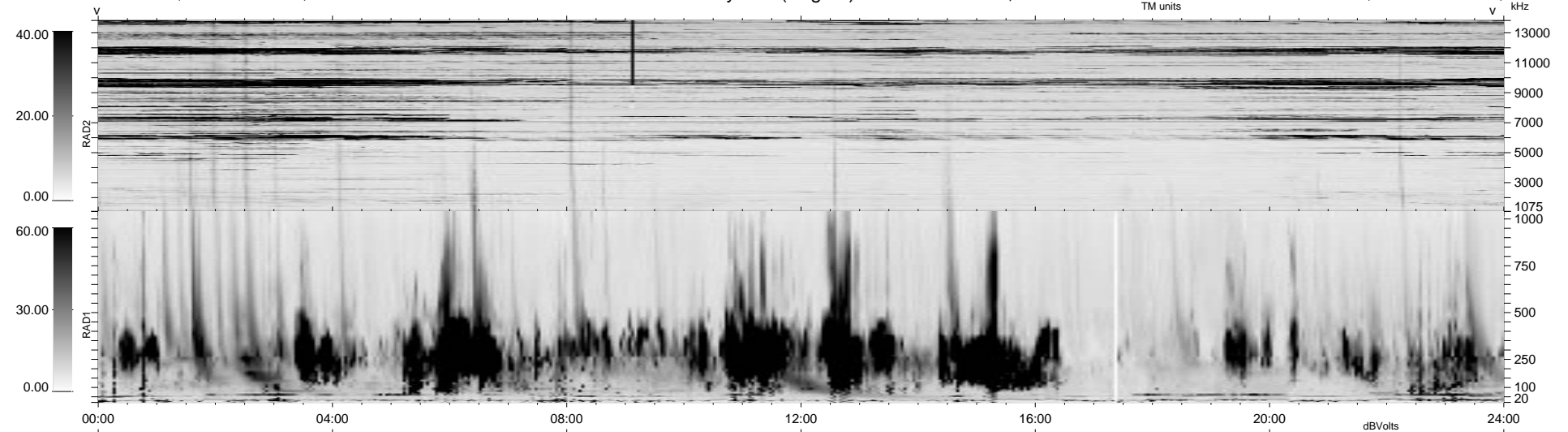


9 bad + 929 good MF/939MF projected (98%) - 1 missing MF
 Avg interval = 180 secs
 Re = -31.69 (0.12, -31.53, -3.09 GSE)

1.7d VMS-SunOS LZ version = v01

WIND/WAVES Summary Plot (Page 1) for 02-OCT-1999, DOY = 275

DAILY Mon Sep 15, 2008
 Re = 45.26 (14.89, -42.60, -3.47 GSE)



```

RAD2
Antenna Ey .....
Mode LIN(1) .....
SUM/SEP SEP .....
Toggle OFF .....

RAD1
Antenna Ex .....
Mode LIS(2,3) .....
SUM/SEP SUM .....
Toggle OFF .....

TNR
Antenna ExEy .....
Mode A-32 .....
Sweep ABCDE .....
  
```