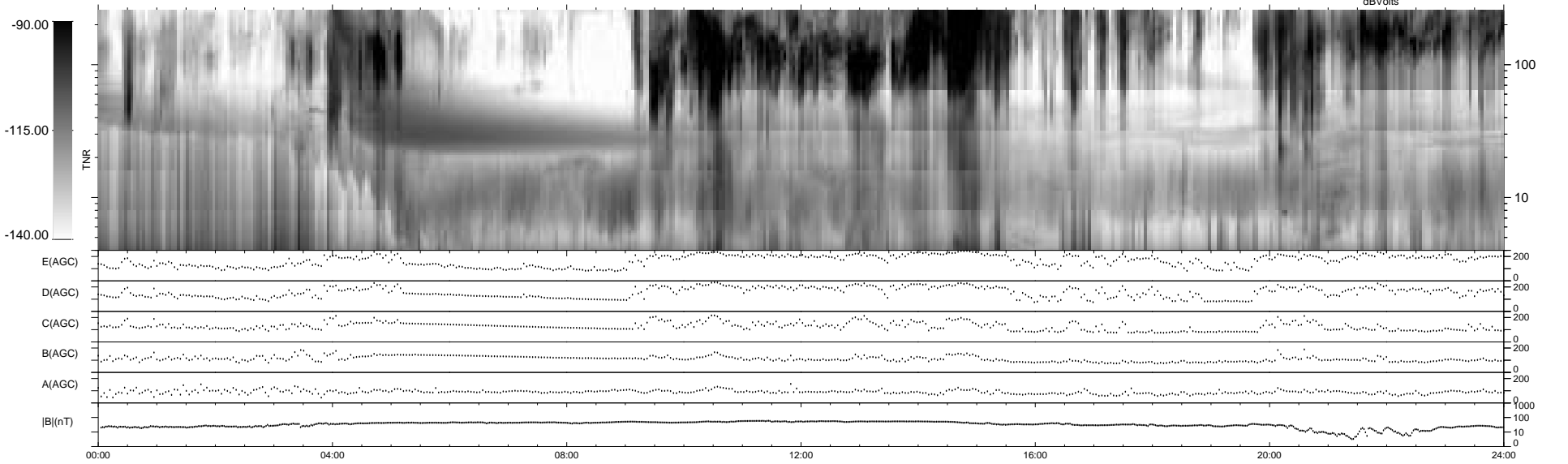
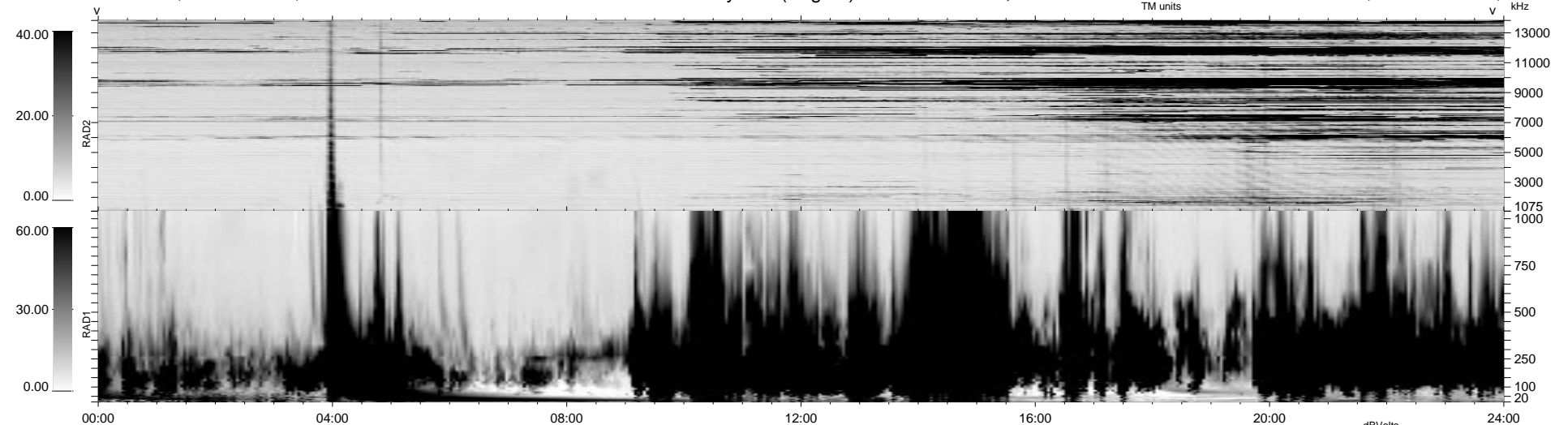


4 bad + 935 good MF/939MF projected (99%) - 0 missing MFs  
 Avg interval = 180 secs  
 Re = 19.92 (3.20, 19.55, 2.08 GSE)

1.7d VMS-SunOS LZ version = v01

WIND/WAVES Summary Plot (Page 1) for 30-SEP-1999, DOY = 273

DAILY Mon Sep 15, 2008  
 Re = 15.88 (-13.46, -8.32, -1.38 GSE)



RAD2  
 Antenna Ey  
 Mode LIN(1)  
 SUM/SEP SEP  
 Toggle OFF

RAD1  
 Antenna Ex  
 Mode LIS(2,3)  
 SUM/SEP SUM  
 Toggle OFF

TNR  
 Antenna ExEy  
 Mode A-32  
 Sweep ABCDE