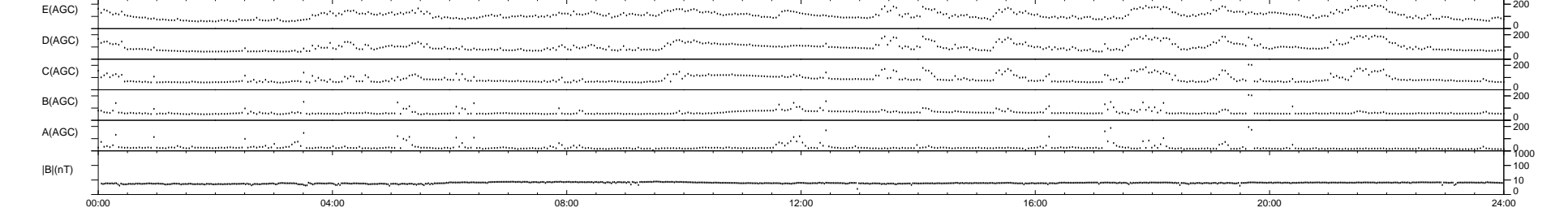
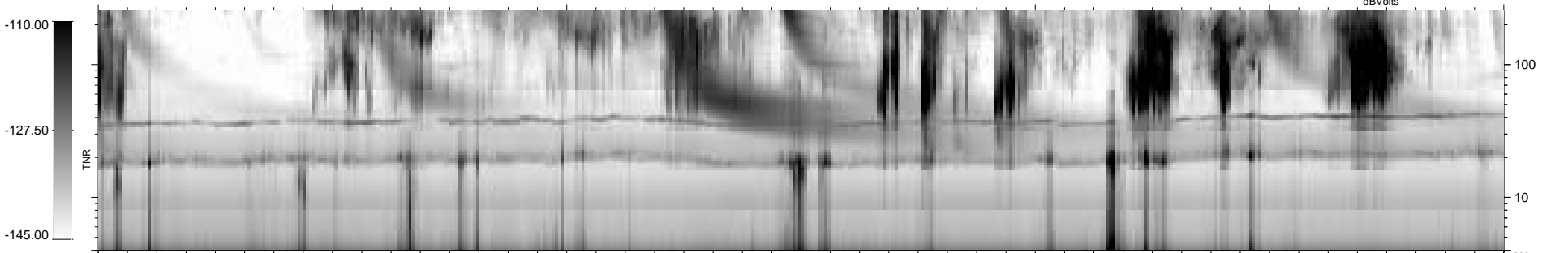
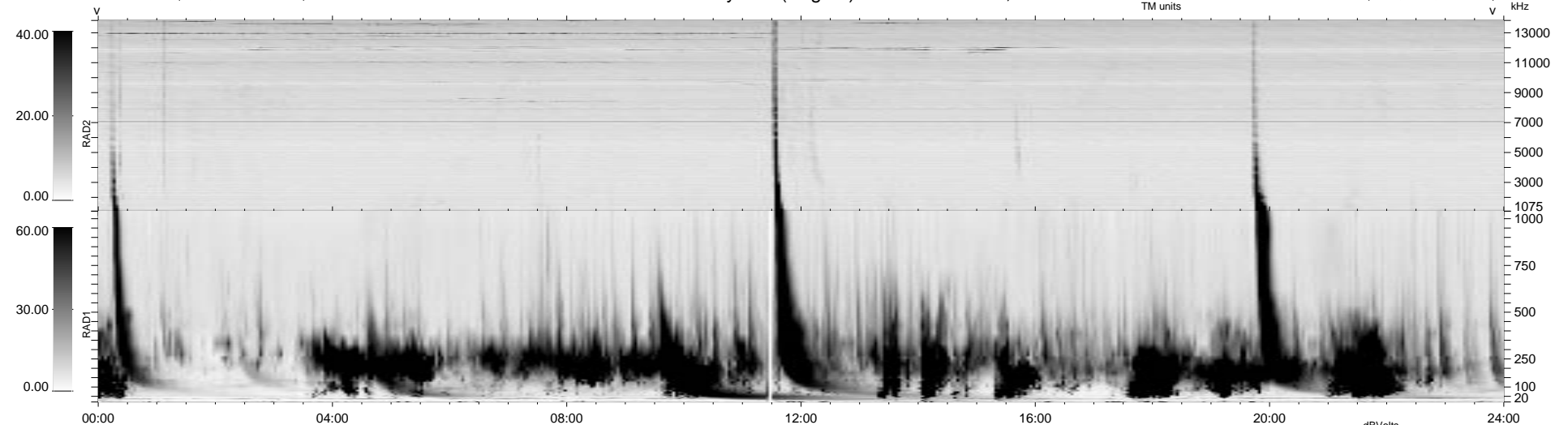


7 bad + 932 good MF/939MF projected (99%) - 0 missing MFs  
 Avg interval = 180 secs  
 Re = - 48.25 (43.73, 20.07, 3.60 GSE)

1.7d VMS-SunOS LZ version = v01  
 DAILY Mon Sep 15, 2008  
 Re = 35.62 (26.99, 23.00, 3.33 GSE)

WIND/WAVES Summary Plot (Page 1) for 28-SEP-1999, DOY = 271



RAD2  
 Antenna Ey .....  
 Mode LIN(1) .....  
 SUM/SEP SEP .....  
 Toggle OFF .....  
 RAD1  
 Antenna Ex .....  
 Mode LIS(2,3) .....  
 SUM/SEP SUM .....  
 Toggle OFF .....  
 TNR  
 Antenna ExEy .....  
 Mode A-32 .....  
 Sweep ABCDE .....