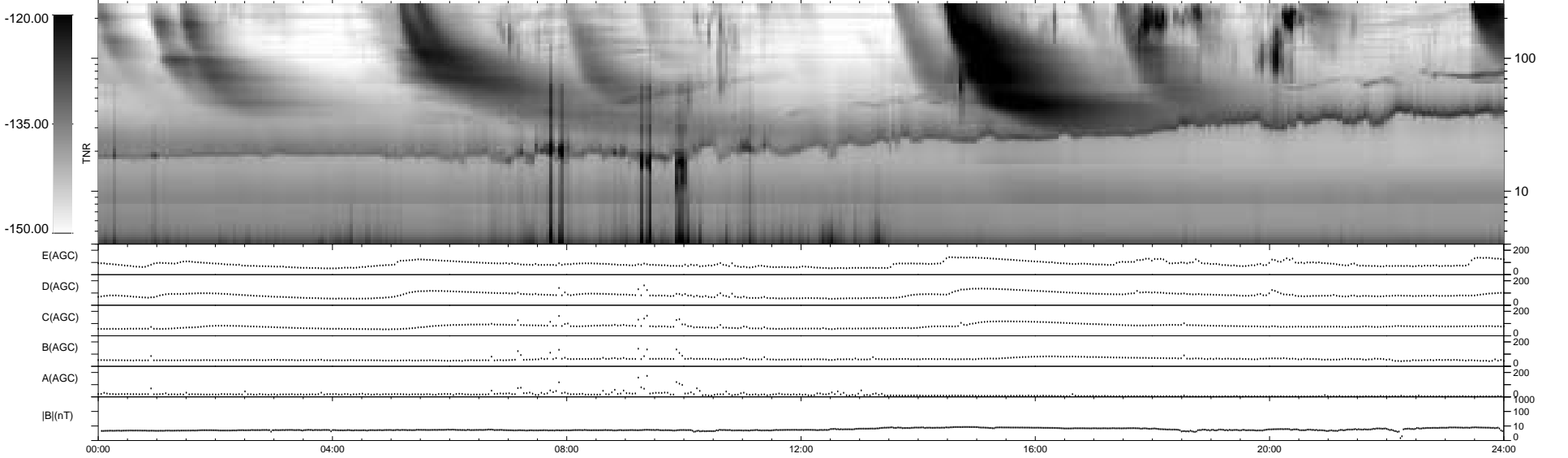
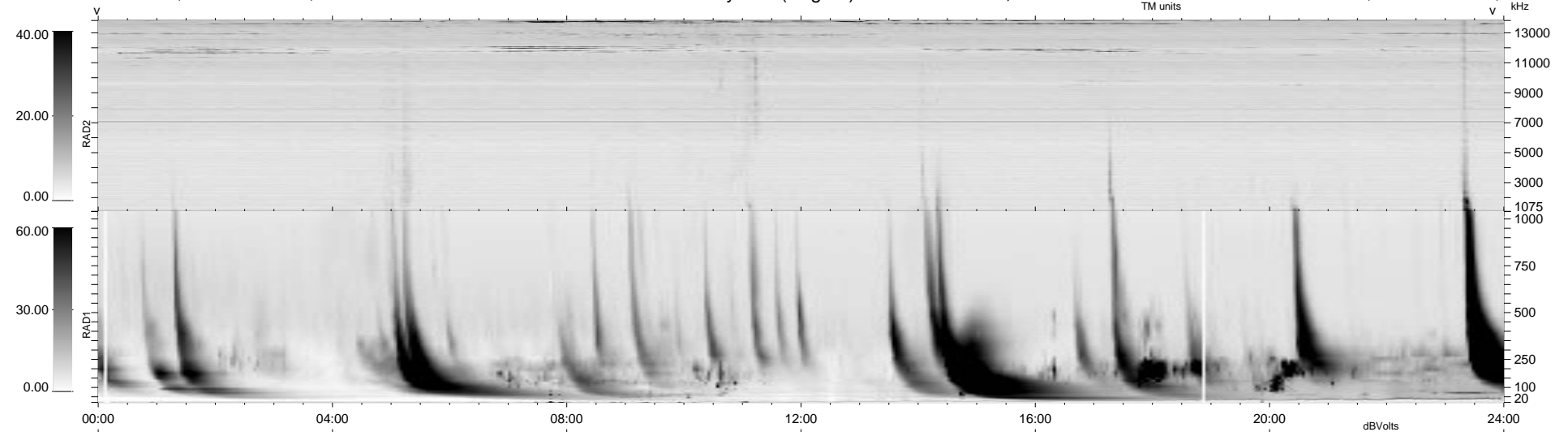


12 bad + 927 good MF/939MF projected (98%) - 0 missing MFs
 Avg interval = 180 secs
 Re = 87.09 (84.82, -19.75, -0.26 GSE)

1.7d VMS-SunOS LZ version = v02

WIND/WAVES Summary Plot (Page 1) for 20-SEP-1999, DOY = 263

DAILY Mon Sep 15, 2008
 Re = 86.51 (85.14, -15.32, 0.38 GSE)



RAD2
 Antenna Ey
 Mode LIN(1)
 SUM/SEP SEP
 Toggle OFF
 RAD1
 Antenna Ex
 Mode LIS(2,3)
 SUM/SEP SUM
 Toggle OFF
 TNR
 Antenna ExEy
 Mode A-32
 Sweep ABCDE