

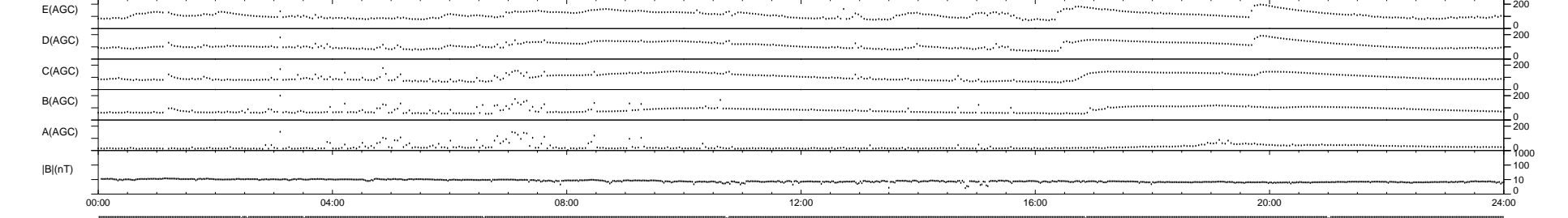
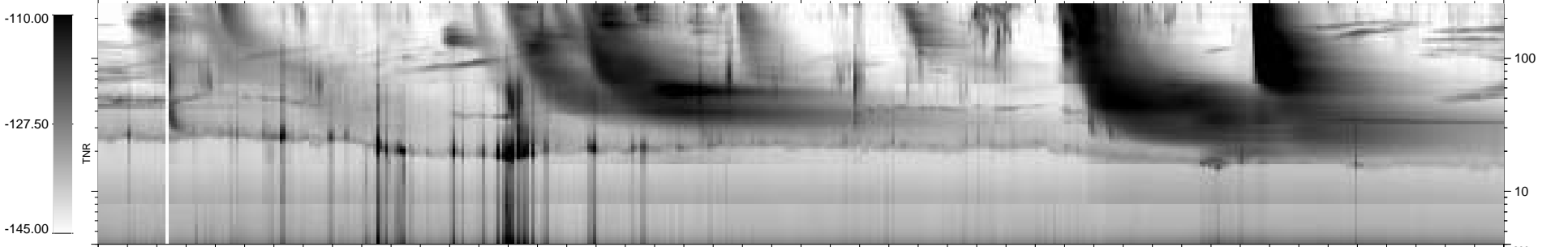
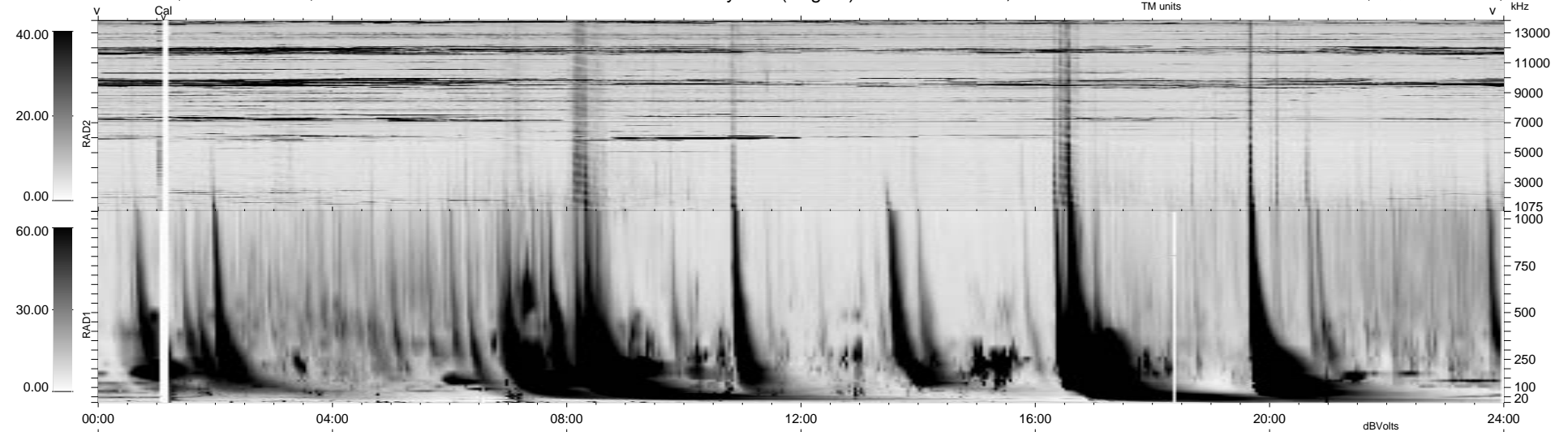
9 bad + 930 good MF/939MF projected (99%) - 0 missing MFs  
 Avg interval = 180 secs  
 Re = - 59.00 (44.11, -39.00, -3.79 GSE)

1.7d VMS-SunOS LZ version = v01

DAILY Mon Sep 15, 2008

Re = 67.10 (54.87, -38.47, -3.54 GSE)

### WIND/WAVES Summary Plot (Page 1) for 13-SEP-1999, DOY = 256



```

RAD2
Antenna Ey .....
Mode LIN(1) .....
SUM/SEP SEP .....
Toggle OFF .....

RAD1
Antenna Ex .....
Mode LIS(2,3) .....
SUM/SEP SUM .....
Toggle OFF .....

TNR
Antenna ExEy .....
Mode A-32 .....
Sweep ABCDE .....
  
```