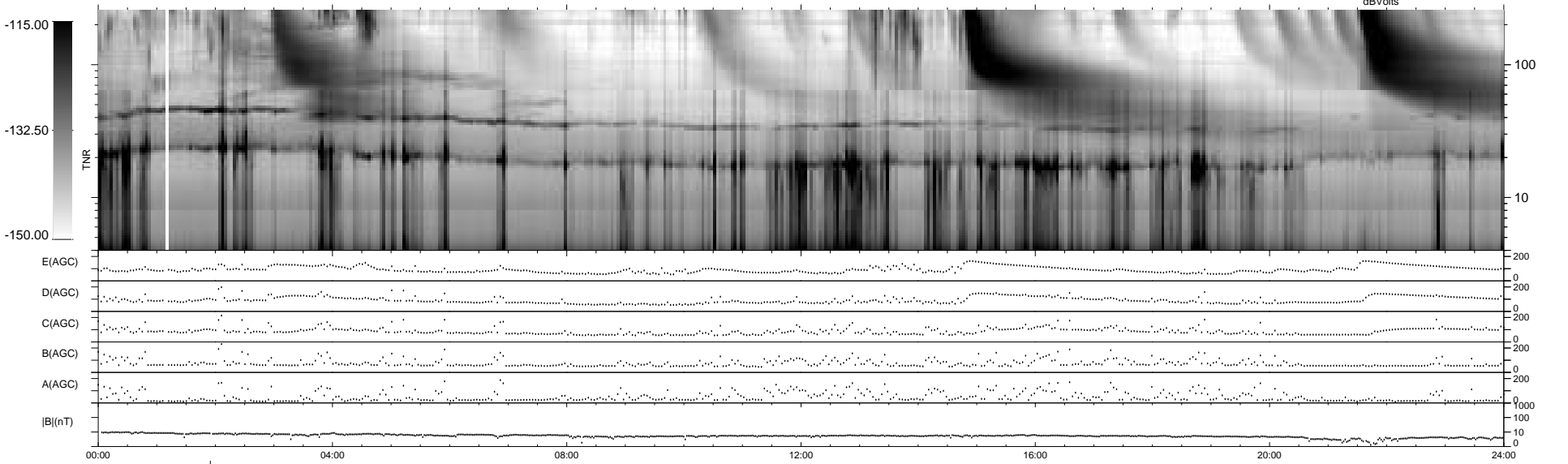
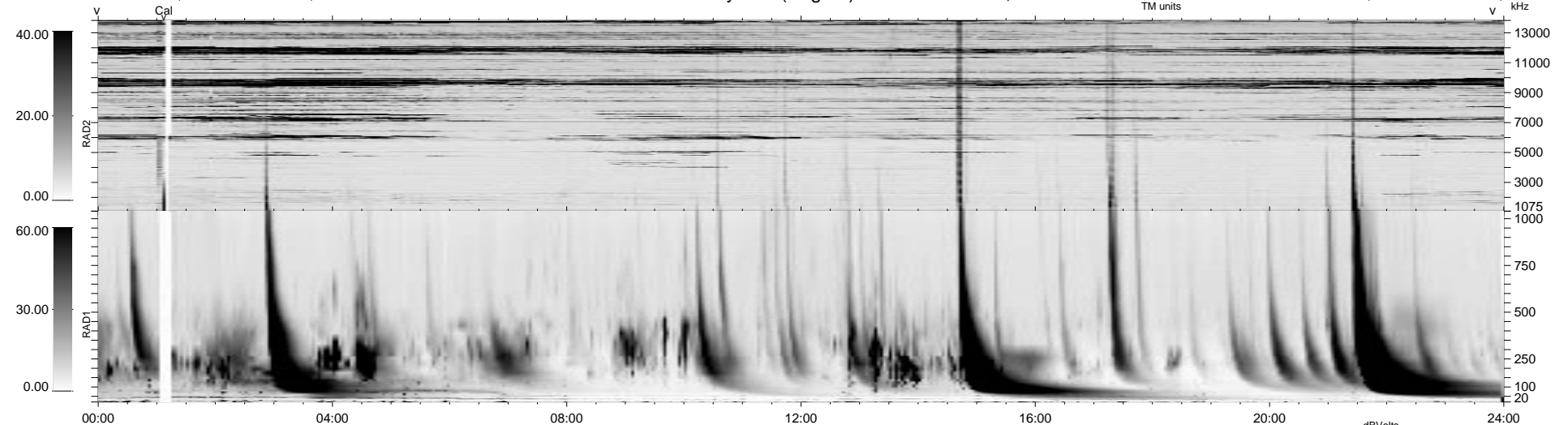


8 bad + 930 good MF/939MF projected (99%) - 1 missing MF  
 Avg interval = 180 secs  
 Re = -36.15 (14.39, -32.98, -3.47 GSE)

1.7d VMS-SunOS LZ version = v01  
 DAILY Mon Sep 15, 2008  
 Re = 48.76 (30.71, -37.68, -3.83 GSE)

WIND/WAVES Summary Plot (Page 1) for 11-SEP-1999, DOY = 254



RAD2  
 Antenna Ey .....  
 Mode LIN(1) .....  
 SUM/SEP SEP .....  
 Toggle OFF .....  
 RAD1  
 Antenna Ex .....  
 Mode LIS(2,3) .....  
 SUM/SEP SUM .....  
 Toggle OFF .....  
 TNR  
 Antenna ExEy .....  
 Mode A-32 .....  
 Sweep ABCDE .....