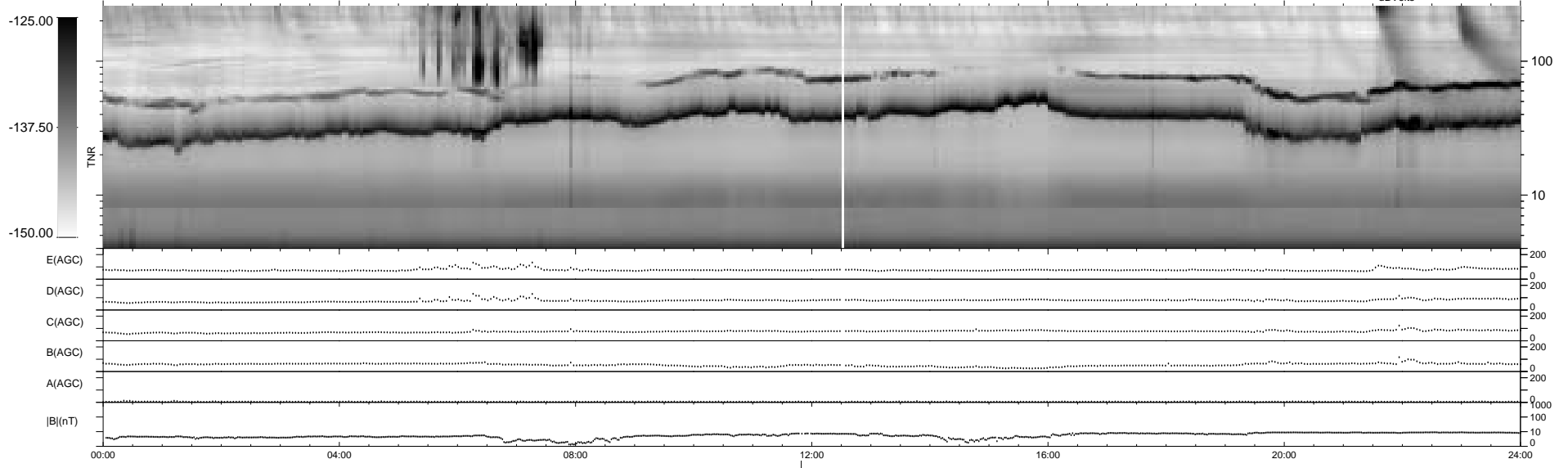
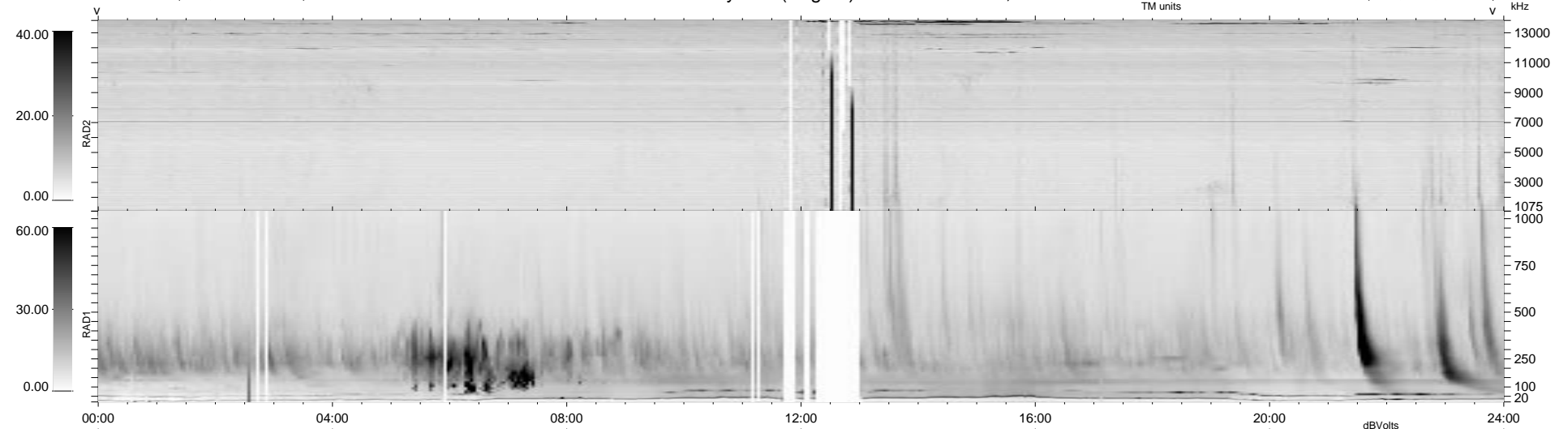


73 bad + 865 good MF/939MF projected (92%) - 1 missing MF
 Avg interval = 180 secs
 Re = 55.86 (44.61, 33.45, 3.44 GSE)

1.7d VMS-SunOS LZ version = v01

WIND/WAVES Summary Plot (Page 1) for 06-SEP-1999, DOY = 249

DAILY Mon Sep 15, 2008
 Re = 44.99 (30.29, 33.08, 3.51 GSE)



```

RAD2
Antenna Ey .....
Mode LIN(1) .....
SUM/SEP SEP .....
Toggle OFF .....

RAD1
Antenna Ex .....
Mode LIS(2,3) .....
SUM/SEP SUM .....
Toggle OFF .....

TNR
Antenna ExEy .....
Mode A-32 .....
Sweep ABCDE .....
  
```