

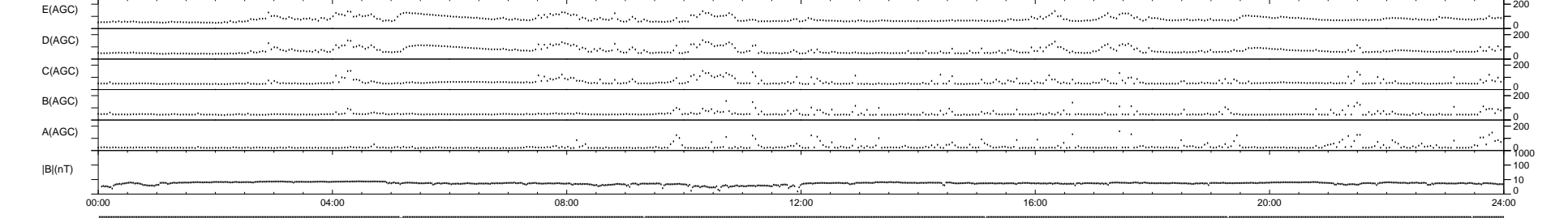
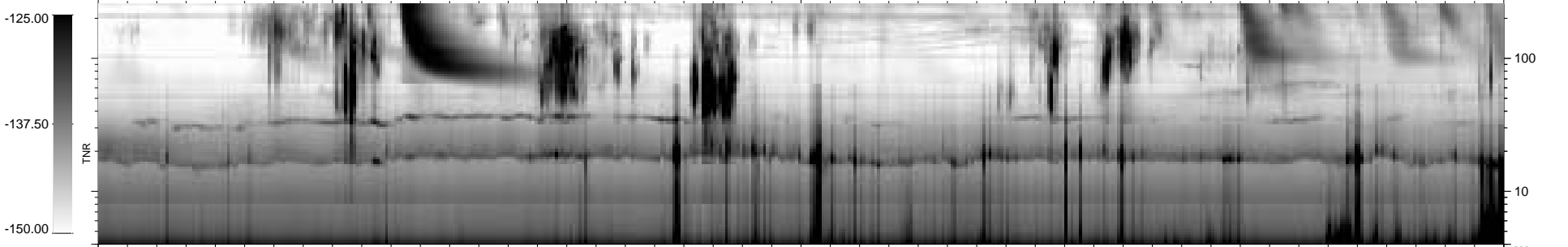
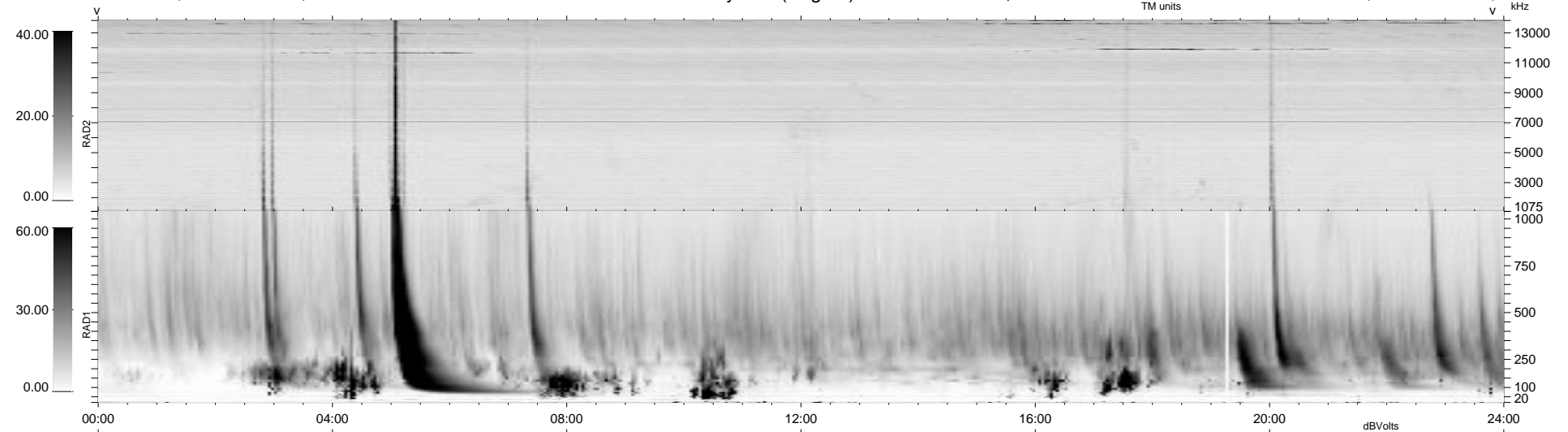
6 bad + 933 good MF/939MF projected (99%) - 0 missing MFs
 Avg interval = 180 secs
 Re = 71.71 (65.31, 29.49, 2.68 GSE)

1.7d VMS-SunOS LZ version = v01

DAILY Mon Sep 15, 2008

Re = 64.71 (56.18, 31.96, 3.12 GSE)

WIND/WAVES Summary Plot (Page 1) for 04-SEP-1999, DOY = 247



```

RAD2
Antenna Ey .....
Mode LIN(1) .....
SUM/SEP SEP .....
Toggle OFF .....

RAD1
Antenna Ex .....
Mode LIS(2,3) .....
SUM/SEP SUM .....
Toggle OFF .....

TNR
Antenna ExEy .....
Mode A-32 .....
Sweep ABCDE .....
  
```