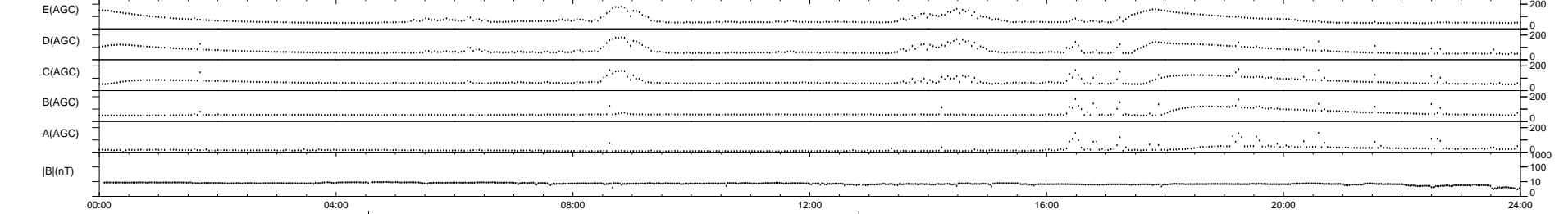
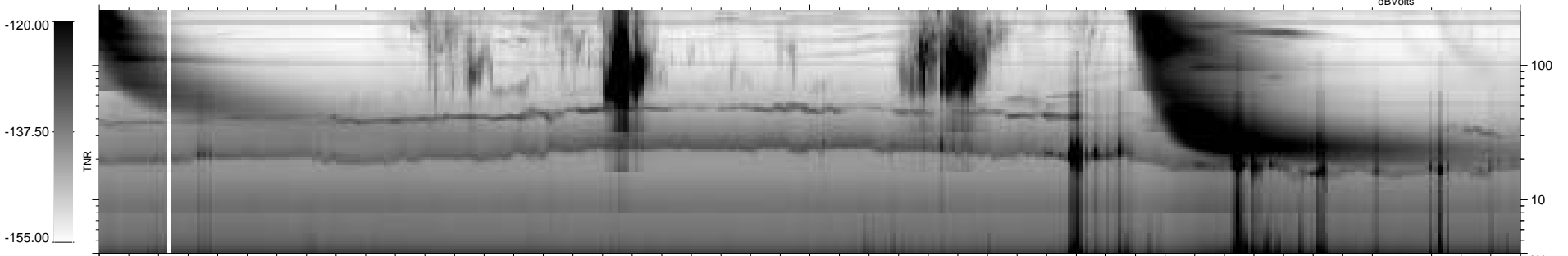
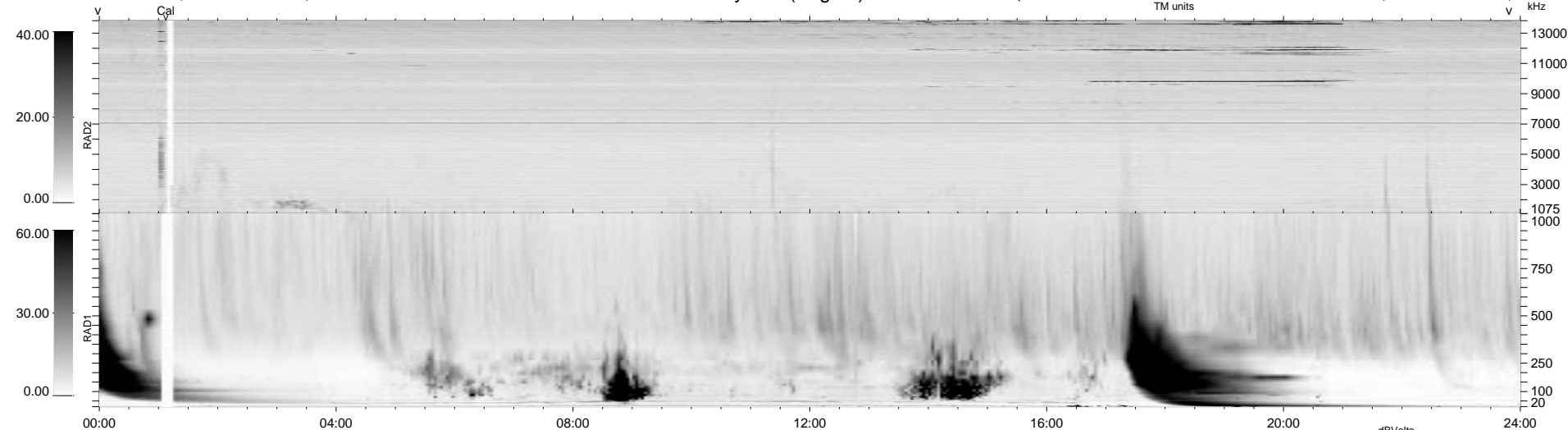


7 bad + 930 good MF/939MF projected (99%) - 2 missing MFs
 Avg interval = 180 secs
 Re = 77.27 (72.60, 26.38, 2.15 GSE)

1.7d VMS-SunOS LZ version = v01

WIND/WAVES Summary Plot (Page 1) for 03-SEP-1999, DOY = 246

DAILY Mon Sep 15, 2008
 Re = 71.75 (65.36, 29.47, 2.68 GSE)



RAD2
 Antenna Ey
 Mode LIN(1)
 SUM/SEP SEP
 Toggle OFF
 RAD1
 Antenna Ex
 Mode LIS(2,3)
 SUM/SEP SUM
 Toggle OFF
 TNR
 Antenna ExEy
 Mode A-32
 Sweep ABCDE