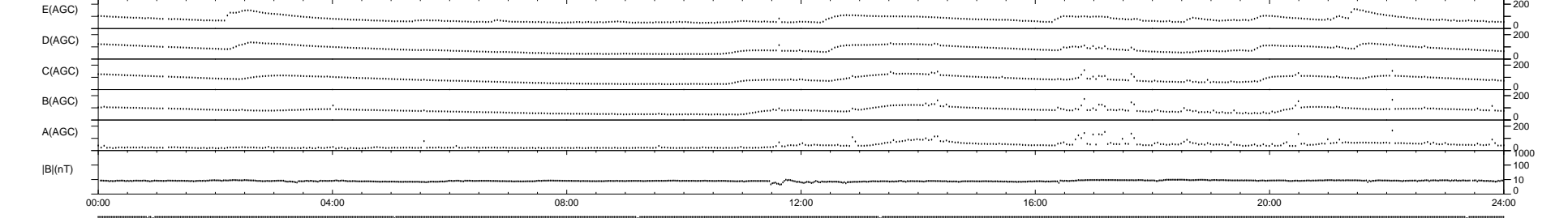
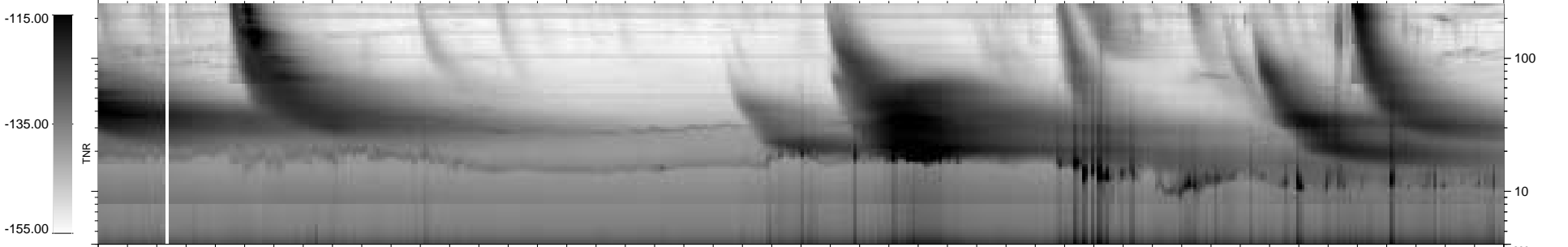
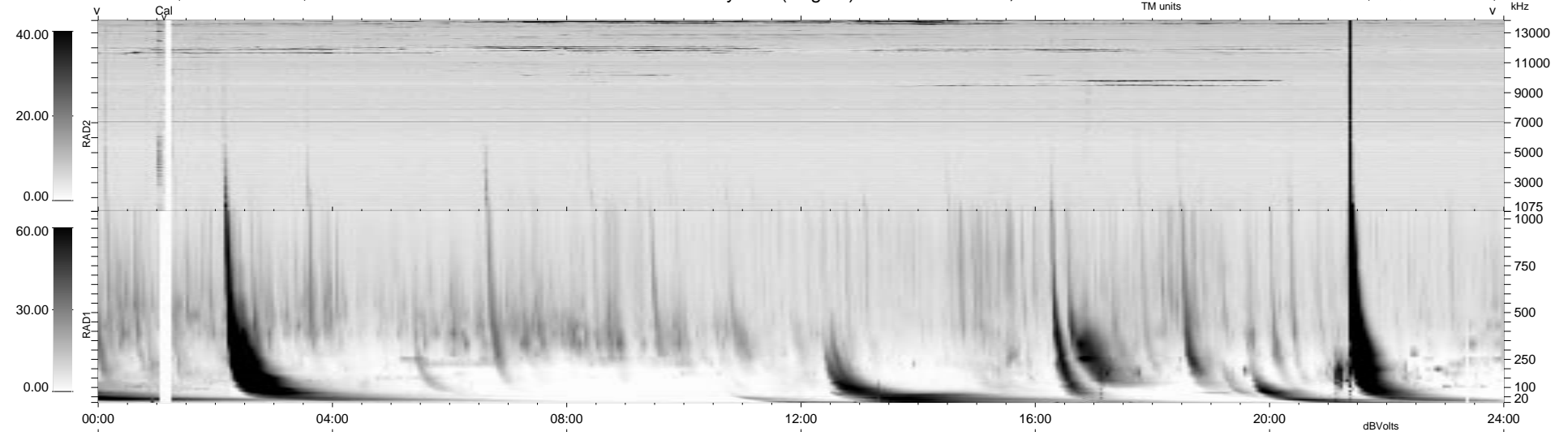


10 bad + 930 good MF/940MF projected (98%) - 0 missing MFs
 Avg interval = 180 secs
 Re = 80.68 (80.32, -7.05, -2.68 GSE)

1.7d VMS-SunOS LZ version = v01

WIND/WAVES Summary Plot (Page 1) for 26-AUG-1999, DOY = 238

DAILY Mon Sep 15, 2008
 Re = 83.97 (83.91, -2.52, -2.15 GSE)



RAD2
 Antenna Ey
 Mode LIN(1)
 SUM/SEP SEP
 Toggle OFF

RAD1
 Antenna Ex
 Mode LIS(2,3)
 SUM/SEP SUM
 Toggle OFF

TNR
 Antenna ExEy
 Mode A-32
 Sweep ABCDE