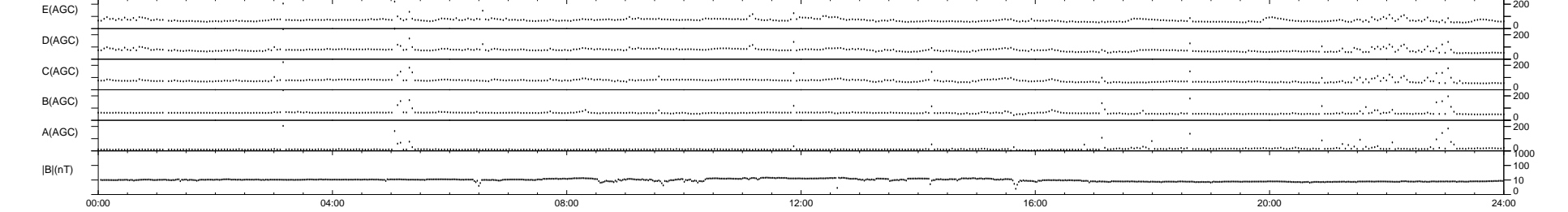
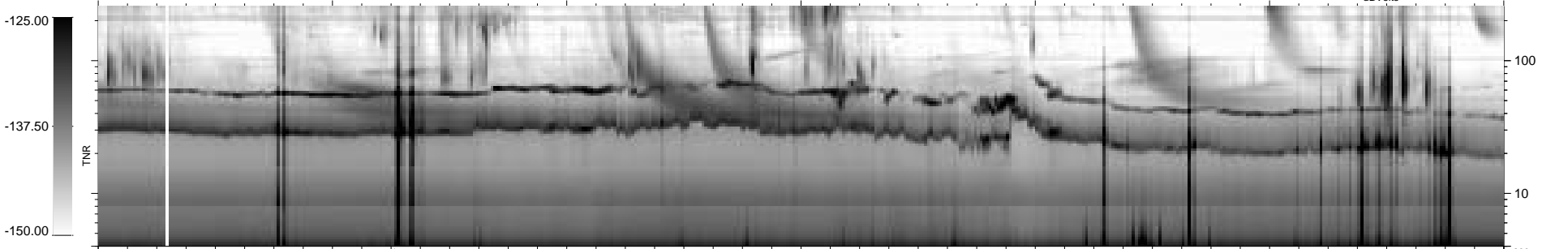
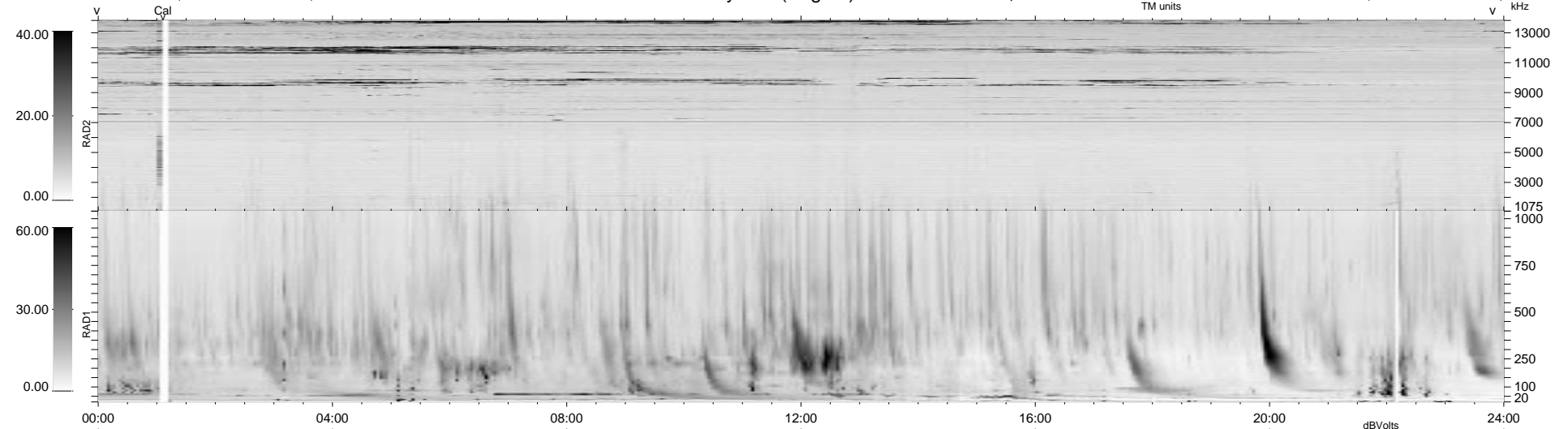


11 bad + 928 good MF/939MF projected (98%) - 0 missing MFs
 Avg interval = 180 secs
 Re = 70.34 (68.38, -16.08, -3.55 GSE)

1.7d VMS-SunOS LZ version = v01

WIND/WAVES Summary Plot (Page 1) for 24-AUG-1999, DOY = 236

DAILY Mon Sep 15, 2008
 Re = 76.13 (75.17, -11.65, -3.16 GSE)



```

RAD2
Antenna Ey
Mode LIN(1)
SUM/SEP SEP
Toggle OFF

RAD1
Antenna Ex
Mode LIS(2,3)
SUM/SEP SUM
Toggle OFF

TNR
Antenna ExEy
Mode A-32
Sweep ABCDE
  
```