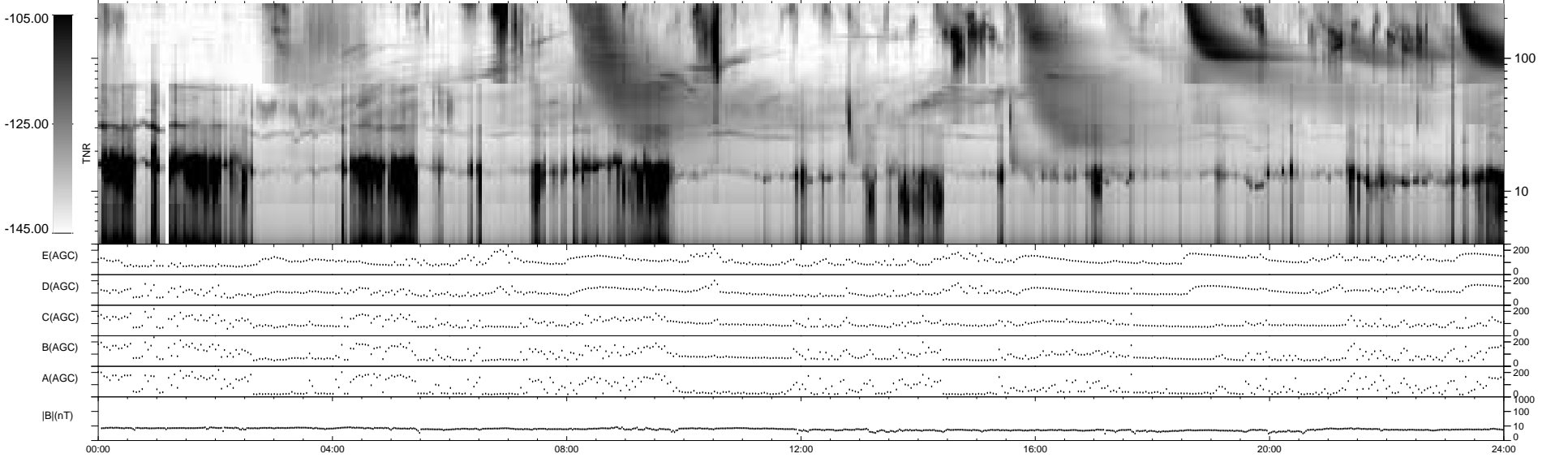
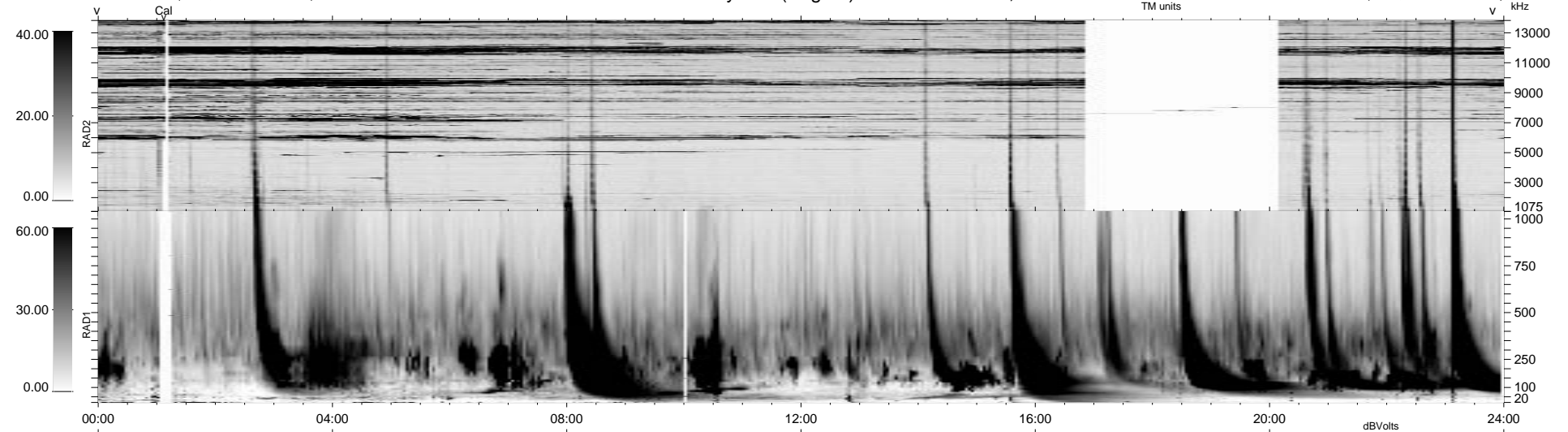


7 bad + 932 good MF/939MF projected (99%) - 0 missing MFs  
 Avg interval = 180 secs  
 Re = 28.06 (13.35, -24.51, -2.90 GSE)

1.7d VMS-SunOS LZ version = v01

WIND/WAVES Summary Plot (Page 1) for 20-AUG-1999, DOY = 232

DAILY Mon Sep 15, 2008  
 Re = 42.32 (33.11, -26.10, -3.71 GSE)



RAD2  
 Antenna Ey .....  
 Mode LIN(1) ..... FIX(131) . . . . . FIX(135) . . . . . FIX(139) . . . . . LIN(1) . . . . .  
 SUM/SEP SEP .....  
 Toggle OFF .....  
 RAD1  
 Antenna Ex .....  
 Mode LIS(2,3) .....  
 SUM/SEP SUM .....  
 Toggle OFF .....  
 TNR  
 Antenna ExEy .....  
 Mode A-32 .....  
 Sweep ABCDE .....