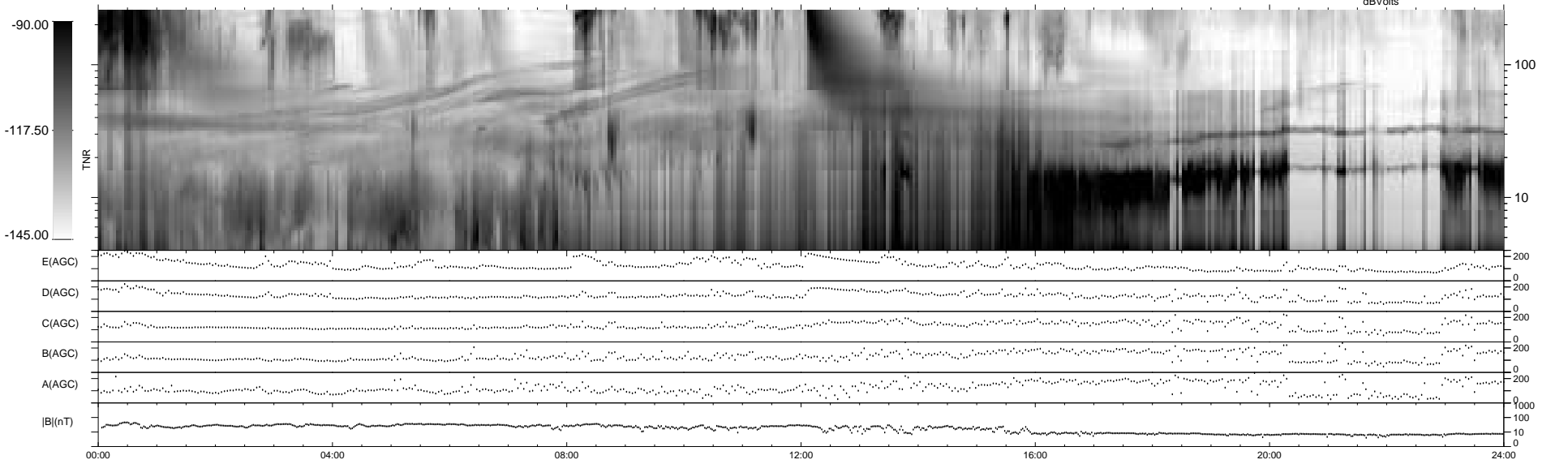
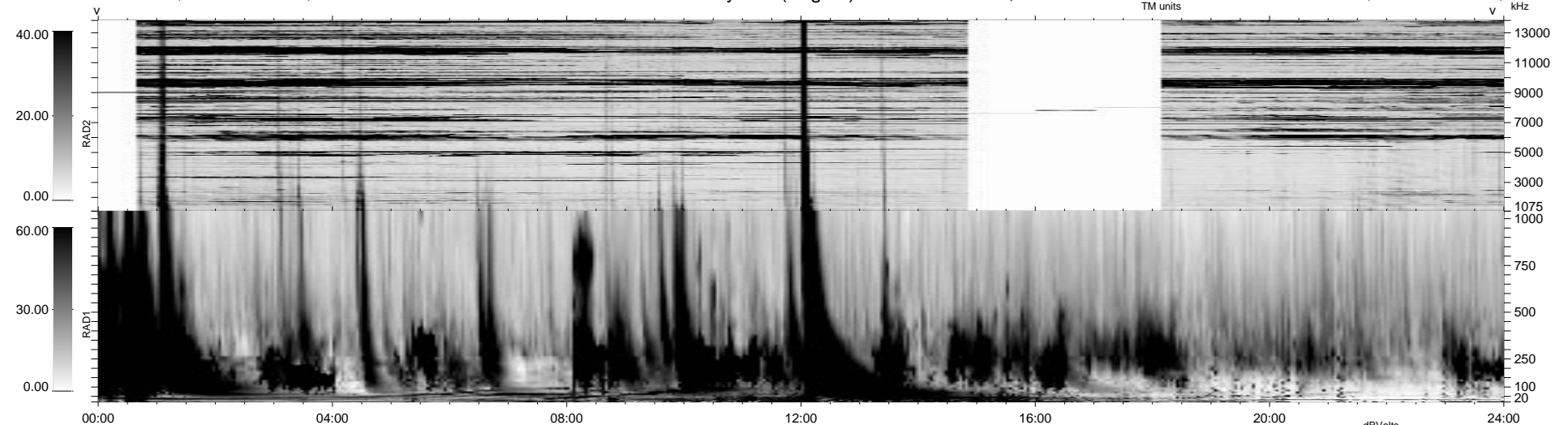


8 bad + 931 good MF/939MF projected (99%) - 0 missing MFs
 Avg interval = 180 secs
 Re = 13.46 (-10.90, -7.89, -0.38 GSE)

1.7d VMS-SunOS LZ version = v01

WIND/WAVES Summary Plot (Page 1) for 19-AUG-1999, DOY = 231

DAILY Mon Sep 15, 2008
 Re = 27.95 (13.19, -24.48, -2.89 GSE)



RAD2
 Antenna Ey
 Mode FIX(159) LIN(1) EIX(131) EIX(135) FIX(139) LIN(1)
 SUM/SEP SEP
 Toggle OFF
 RAD1
 Antenna Ex
 Mode LIS(23)
 SUM/SEP SUM
 Toggle OFF
 TNR
 Antenna ExEy
 Mode A-32
 Sweep ABCDE