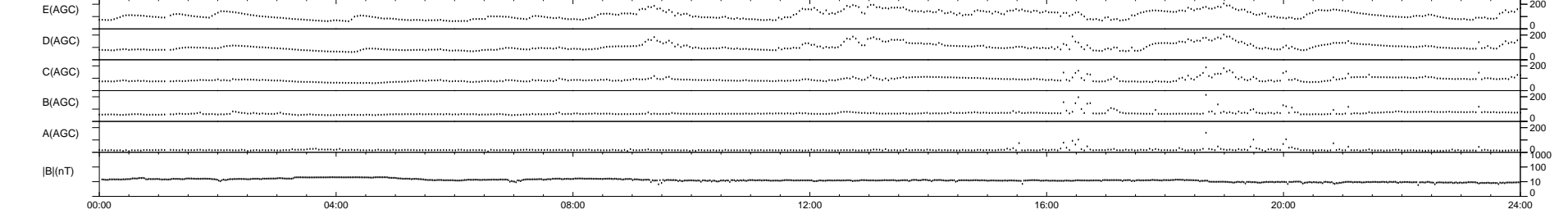
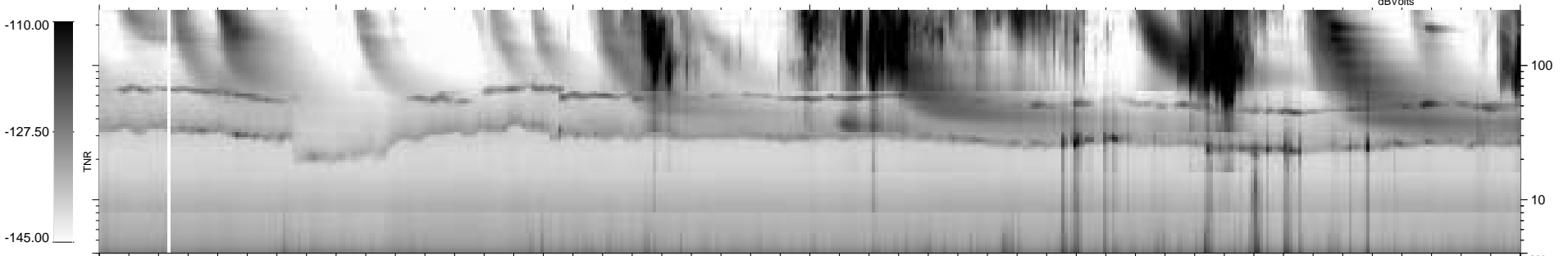
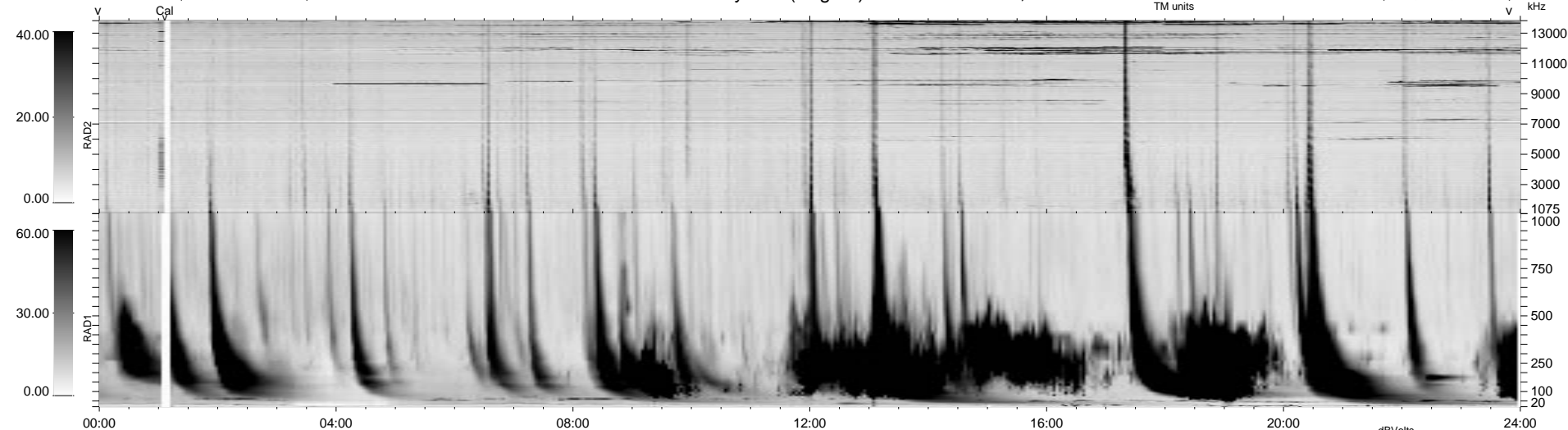


7 bad + 932 good MF/939MF projected (99%) - 0 missing MFs
 Avg interval = 180 secs
 Re = - 51.48 (27.56, 43.37, 3.06 GSE)

1.7d VMS-SunOS LZ version = v01

WIND/WAVES Summary Plot (Page 1) for 16-AUG-1999, DOY = 228

DAILY Mon Sep 15, 2008
 Re = 39.14 (12.73, 36.89, 3.07 GSE)



RAD2
 Antenna Ey
 Mode LIN(1)
 SUM/SEP SEP
 Toggle OFF
 RAD1
 Antenna Ex
 Mode LIS(2,3)
 SUM/SEP SUM
 Toggle OFF
 TNR
 Antenna ExEy
 Mode A-32
 Sweep ABCDE