

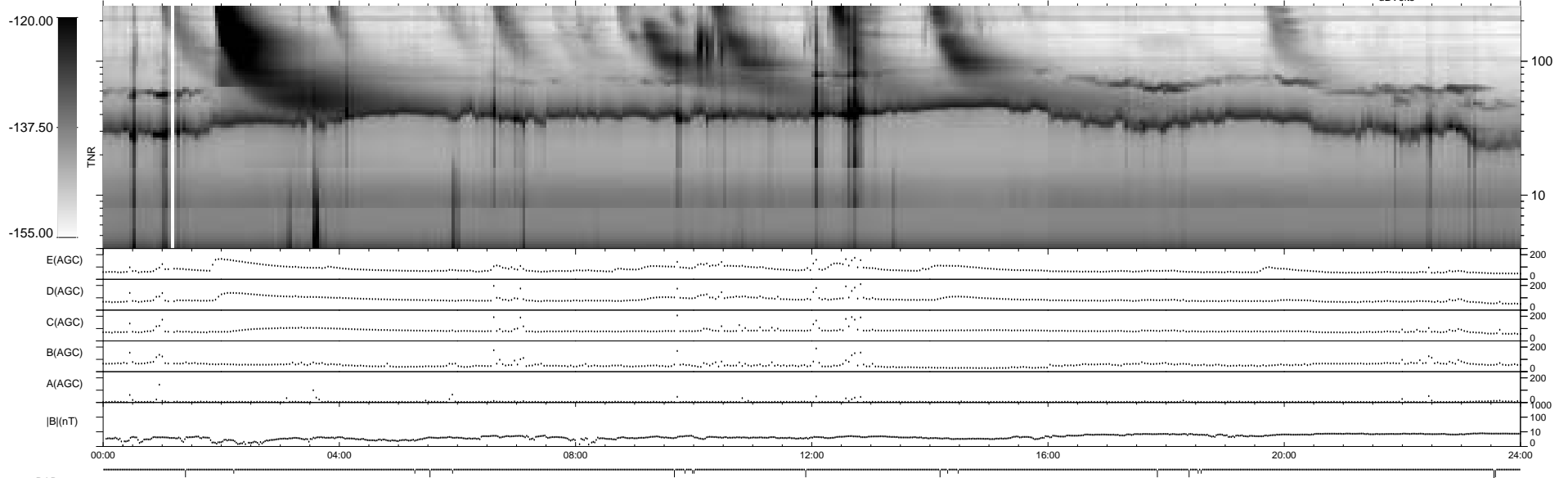
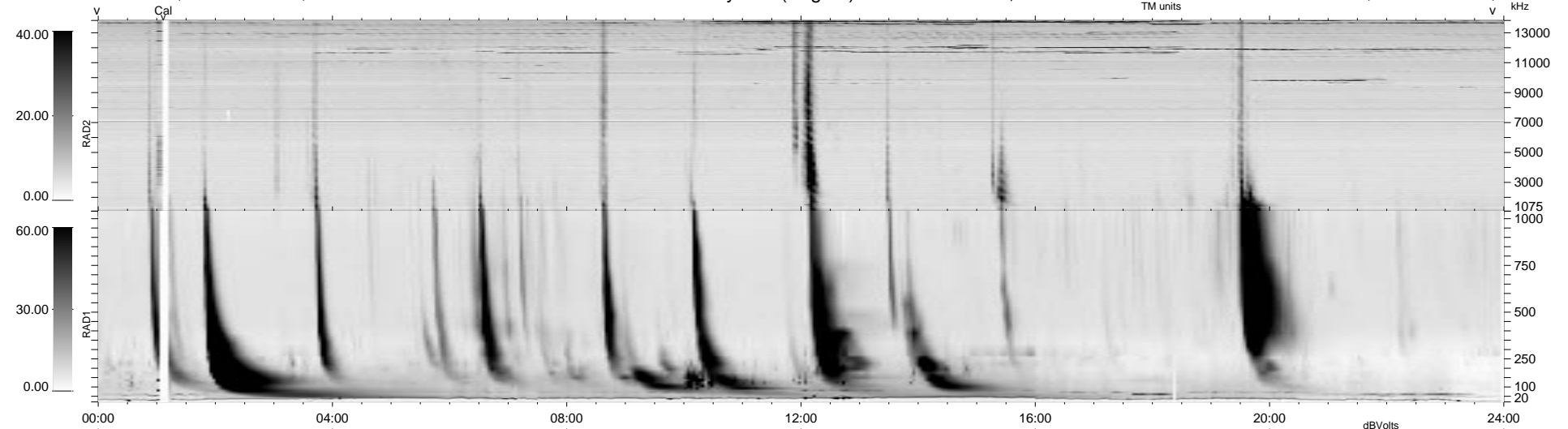
19 bad + 920 good MF/939MF projected (97%) - 0 missing MFs
 Avg interval = 180 secs
 Re = 73.17 (55.75, 47.19, 4.28 GSE)

1.7d VMS-SunOS LZ version = v01

DAILY Mon Sep 15, 2008

Re = 63.01 (41.67, 47.15, 3.29 GSE)

WIND/WAVES Summary Plot (Page 1) for 14-AUG-1999, DOY = 226



```

RAD2
Antenna Ey .....
Mode LIN(1) .....
SUM/SEP SEP .....
Toggle OFF .....

RAD1
Antenna Ex .....
Mode LIS(2,3) .....
SUM/SEP SUM .....
Toggle OFF .....

TNR
Antenna ExEy .....
Mode A-32 .....
Sweep ABCDE .....
  
```