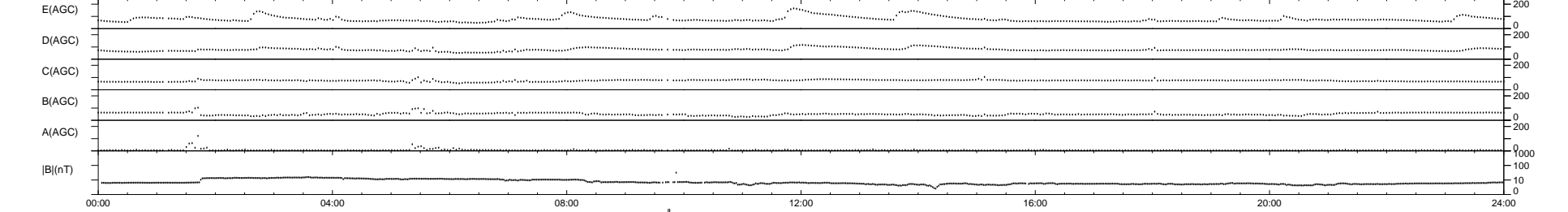
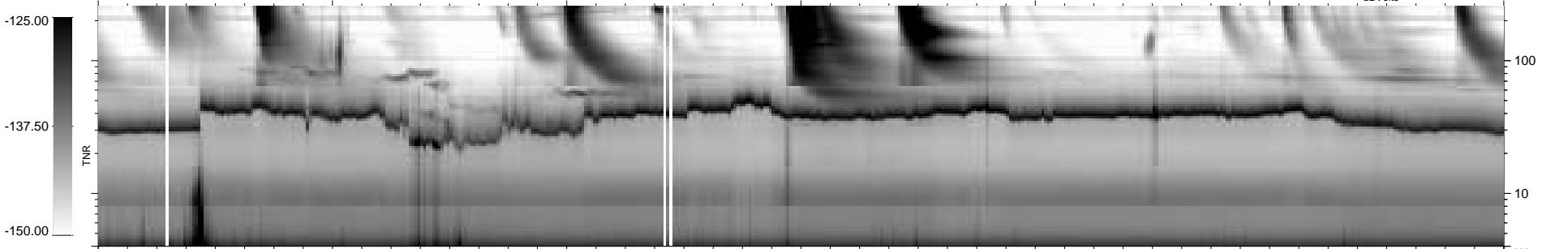
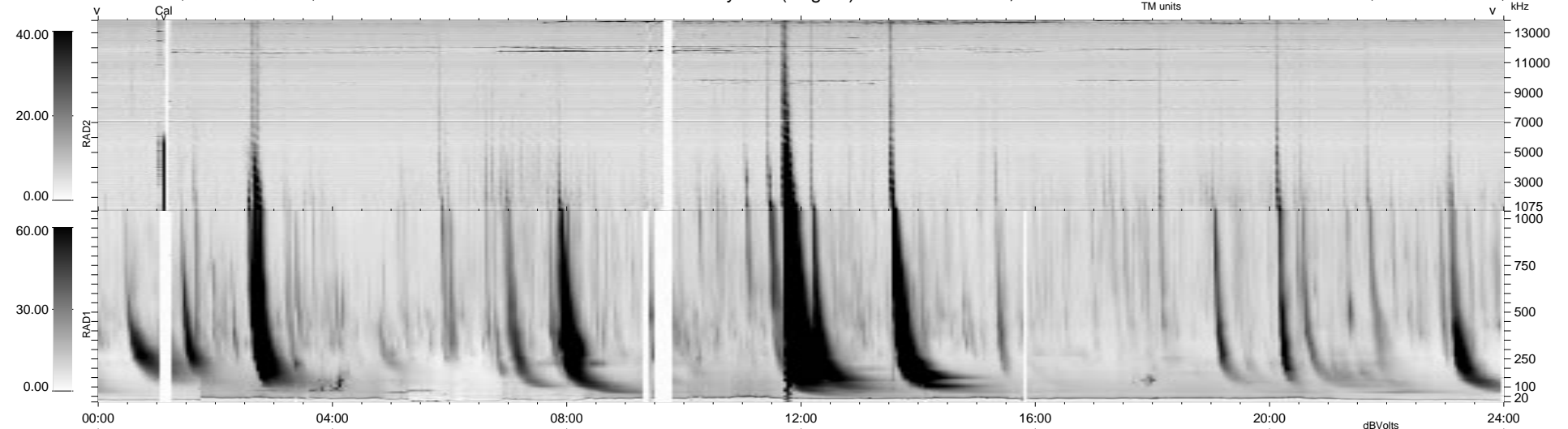


32 bad + 905 good MF/939MF projected (96%) - 2 missing MFs  
 Avg interval = 180 secs  
 Re = 139.30 (137.66, 19.25, 9.16 GSE)

1.7d VMS-SunOS LZ version = v01  
 DAILY Mon Sep 15, 2008  
 Re = 134.52 (132.40, 22.02, 8.94 GSE)

WIND/WAVES Summary Plot (Page 1) for 04-AUG-1999, DOY = 216



```

RAD2
Antenna Ey .....
Mode LIN(1) .....
SUM/SEP SEP .....
Toggle OFF .....

RAD1
Antenna Ex .....
Mode LIS(2,3) .....
SUM/SEP SUM .....
Toggle OFF .....

TNR
Antenna ExEy .....
Mode A-32 .....
Sweep ABCDE .....
  
```