

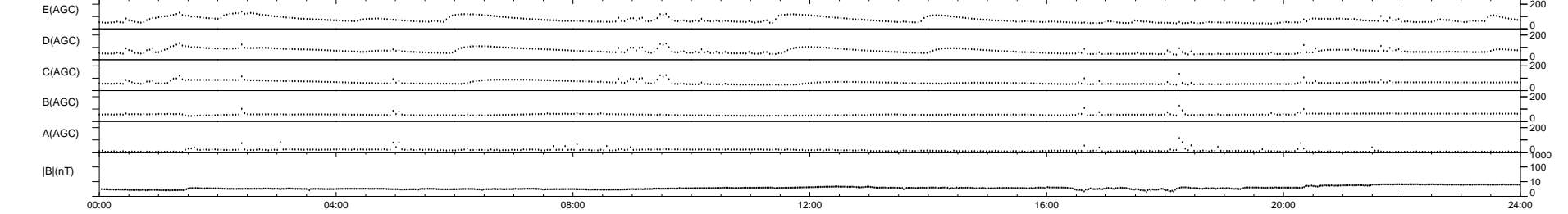
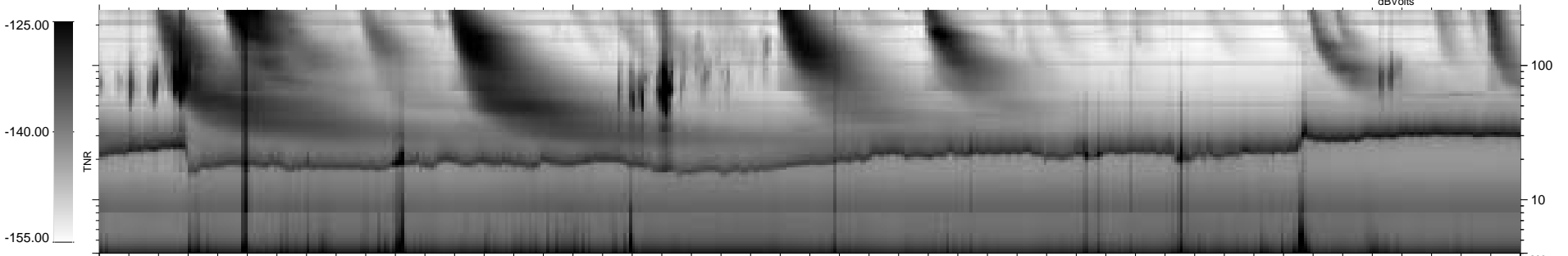
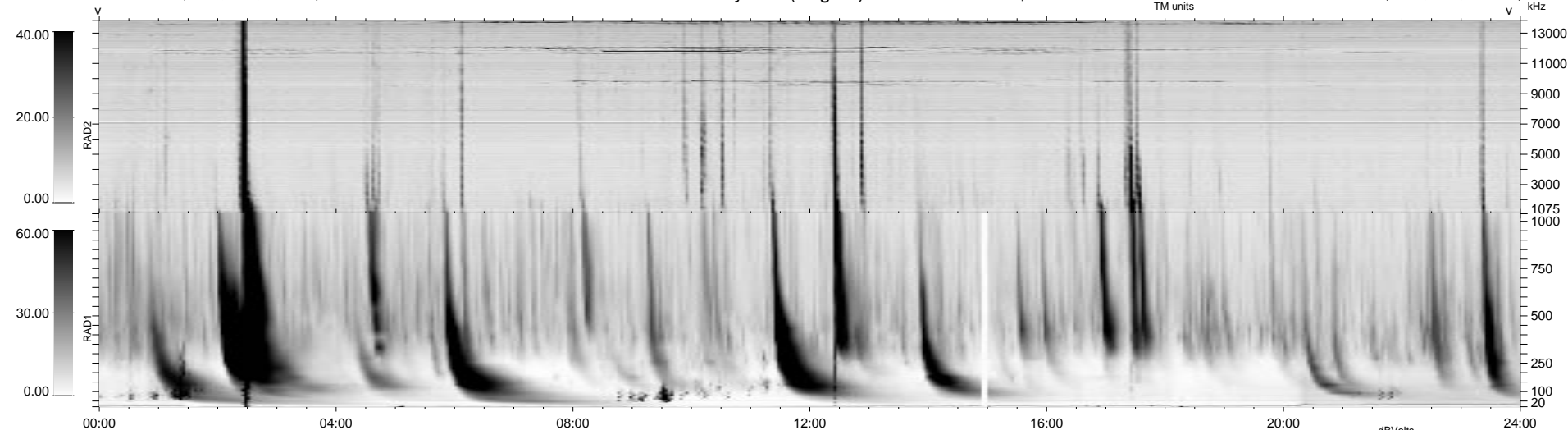
8 bad + 932 good MF/940MF projected (99%) - 0 missing MFs
 Avg interval = 180 secs
 Re = 143.87 (142.60, 16.64, 9.37 GSE)

1.7d VMS-SunOS LZ version = v01

DAILY Mon Sep 15, 2008

Re = 139.36 (137.71, 19.30, 9.19 GSE)

WIND/WAVES Summary Plot (Page 1) for 03-AUG-1999, DOY = 215



RAD2
 Antenna Ey
 Mode LIN(1)
 SUM/SEP SEP
 Toggle OFF

RAD1
 Antenna Ex
 Mode LIS(2,3)
 SUM/SEP SUM
 Toggle OFF

TNR
 Antenna ExEy
 Mode A-32
 Sweep ABCDE