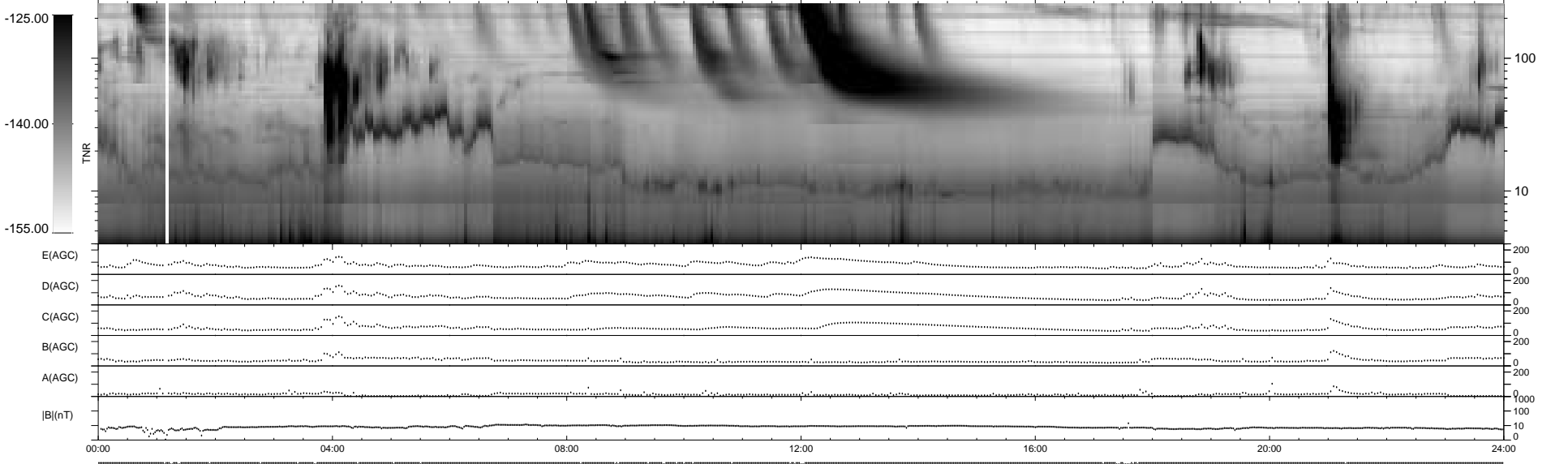
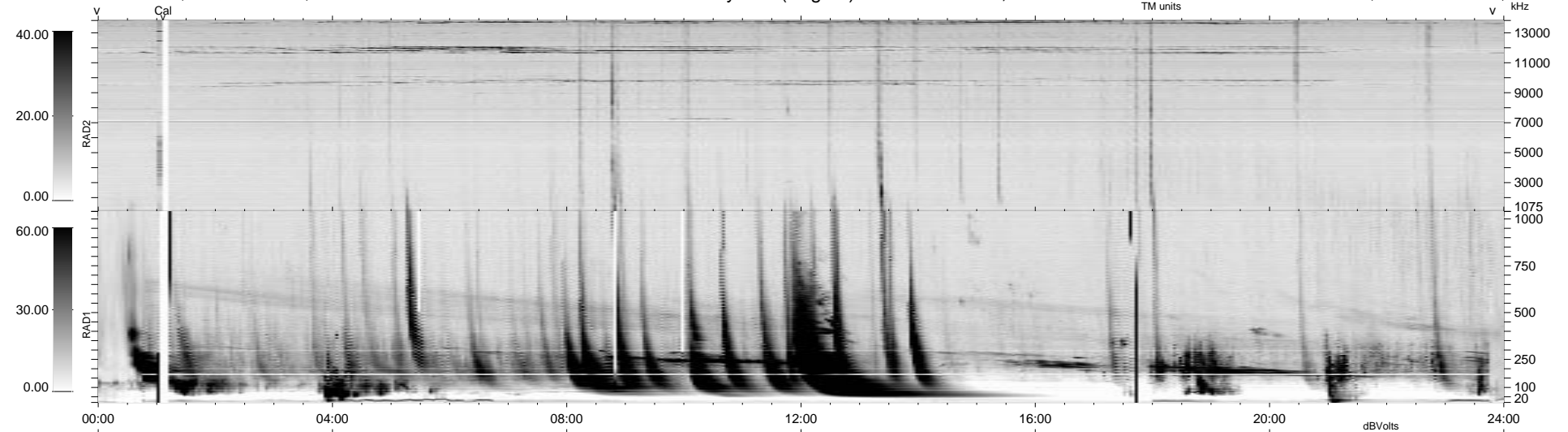


40 bad + 899 good MF/939MF projected (95%) - 0 missing MFs
 Avg interval = 180 secs
 Re = - 156.12 (155.54, 9.37, 9.71 GSE)

1.7d VMS-SunOS LZ version = v01
 DAILY Mon Sep 15, 2008
 Re = 152.28 (151.52, 11.65, 9.63 GSE)

WIND/WAVES Summary Plot (Page 1) for 31-JUL-1999, DOY = 212



```

RAD2
Antenna Ey .....
Mode LIN(1) .....
SUM/SEP SEP .....
Toggle OFF .....

RAD1
Antenna Ex .....
Mode LIS(2,8) ..... LIS(2,8)
SUM/SEP SUM ..... SUM
Toggle OFF .....

TNR
Antenna ExEy .....
Mode A-32 .....
Sweep ABCDE .....
  
```