

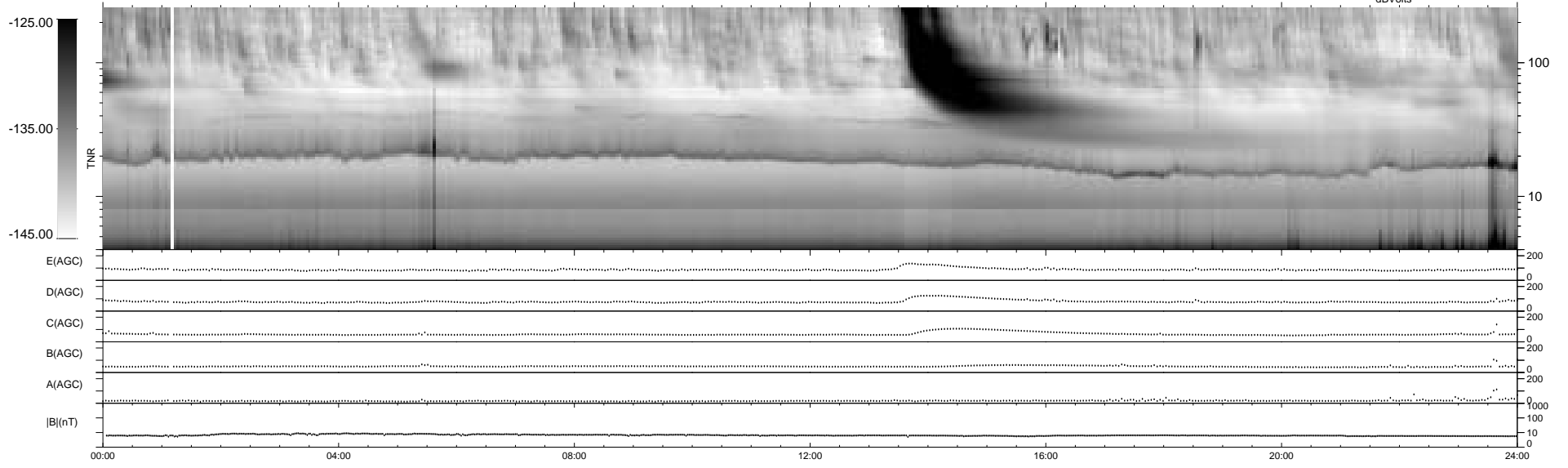
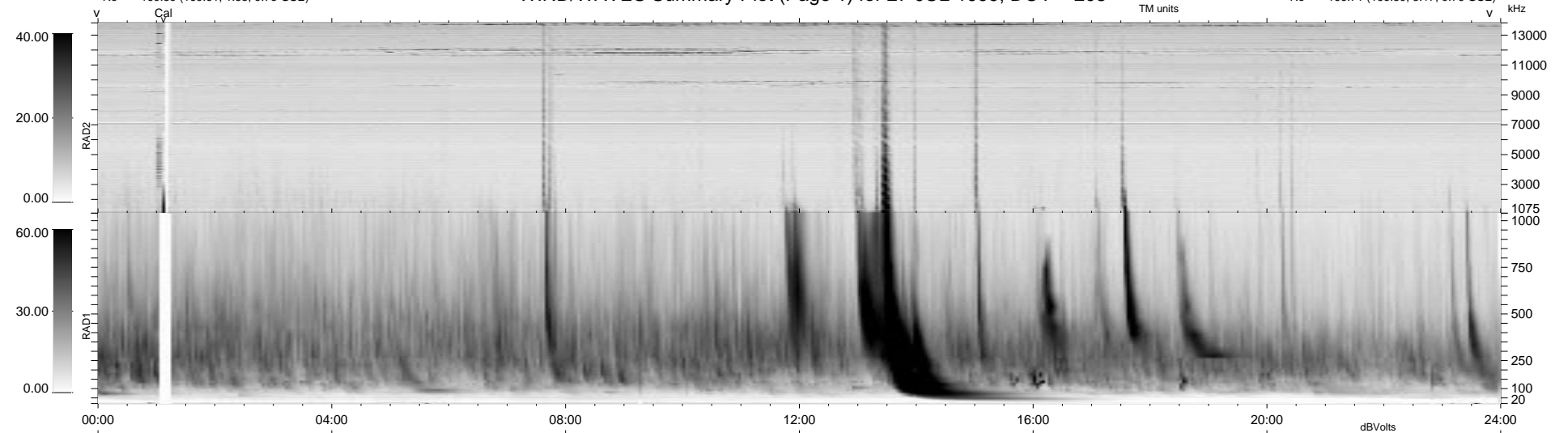
12 bad + 927 good MF/939MF projected (98%) - 0 missing MFs  
 Avg interval = 180 secs  
 Re = - 169.89 (169.61, 1.33, 9.73 GSE)

1.7d VMS-SunOS LZ version = v01

DAILY Mon Sep 15, 2008

Re = 166.71 (166.39, 3.17, 9.76 GSE)

### WIND/WAVES Summary Plot (Page 1) for 27-JUL-1999, DOY = 208



RAD2  
 Antenna Ey .....  
 Mode LIN(1) .....  
 SUM/SEP SEP .....  
 Toggle OFF .....  
 RAD1  
 Antenna Ex .....  
 Mode LIS(2,3) .....  
 SUM/SEP SUM .....  
 Toggle OFF .....  
 TNR  
 Antenna ExEy .....  
 Mode A-32 .....  
 Sweep ABCDE .....