

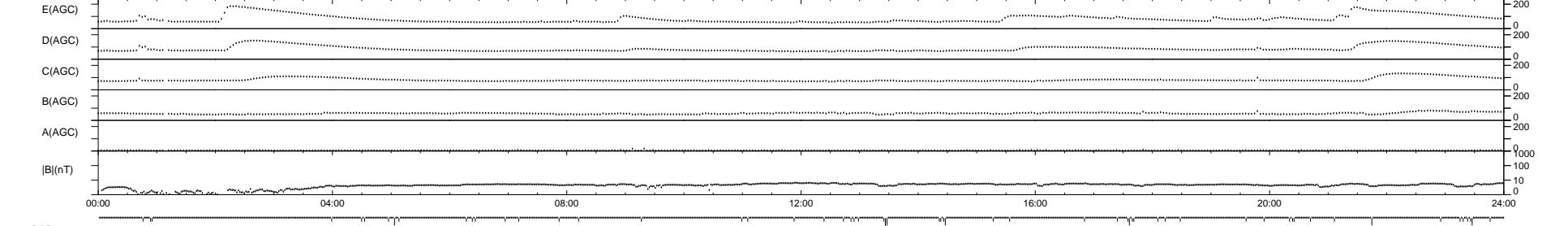
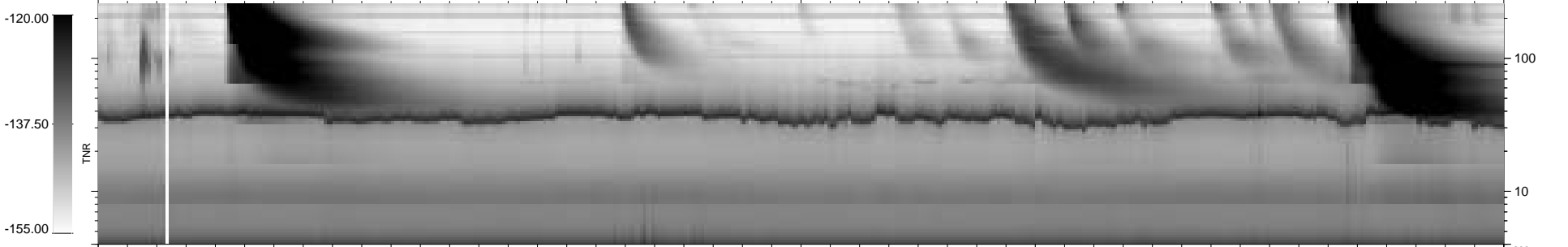
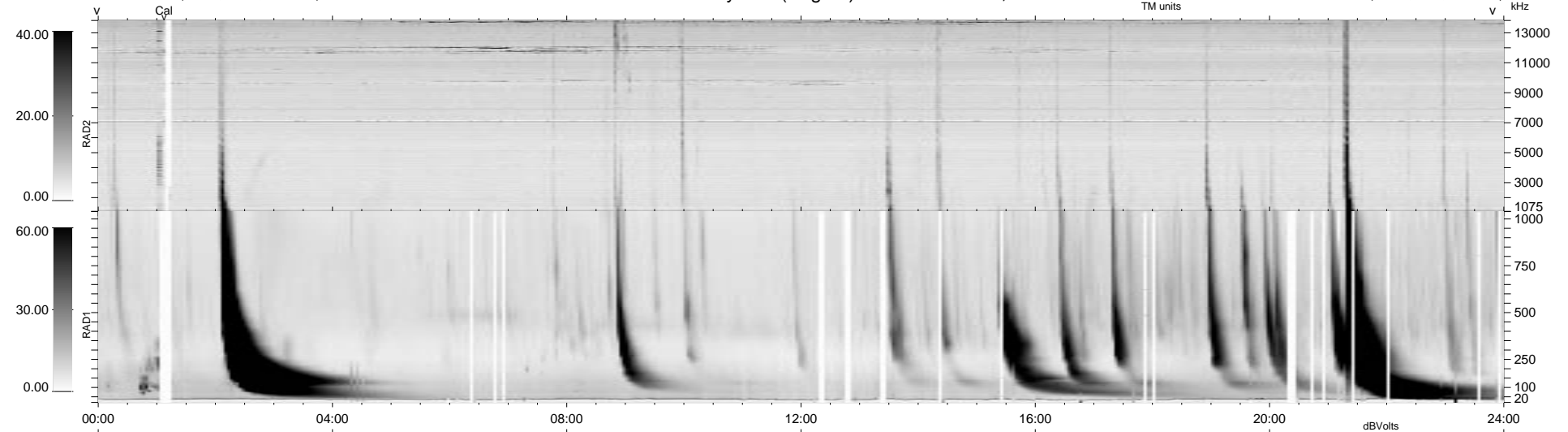
58 bad + 881 good MF/939MF projected (93%) - 0 missing MFs
 Avg interval = 180 secs
 Re = 190.79 (190.35, -10.74, 7.26 GSE)

1.7d VMS-SunOS

LZ version = v01

WIND/WAVES Summary Plot (Page 1) for 19-JUL-1999, DOY = 200

DAILY Mon Sep 15, 2008
 Re = 188.62 (188.23, -9.46, 7.65 GSE)



```

RAD2
Antenna Ey
Mode LIN(1)
SUM/SEP SEP
Toggle OFF

RAD1
Antenna Ex
Mode LIS(2,3)
SUM/SEP SUM
Toggle OFF

TNR
Antenna ExEy
Mode A-32
Sweep ABCDE
  
```