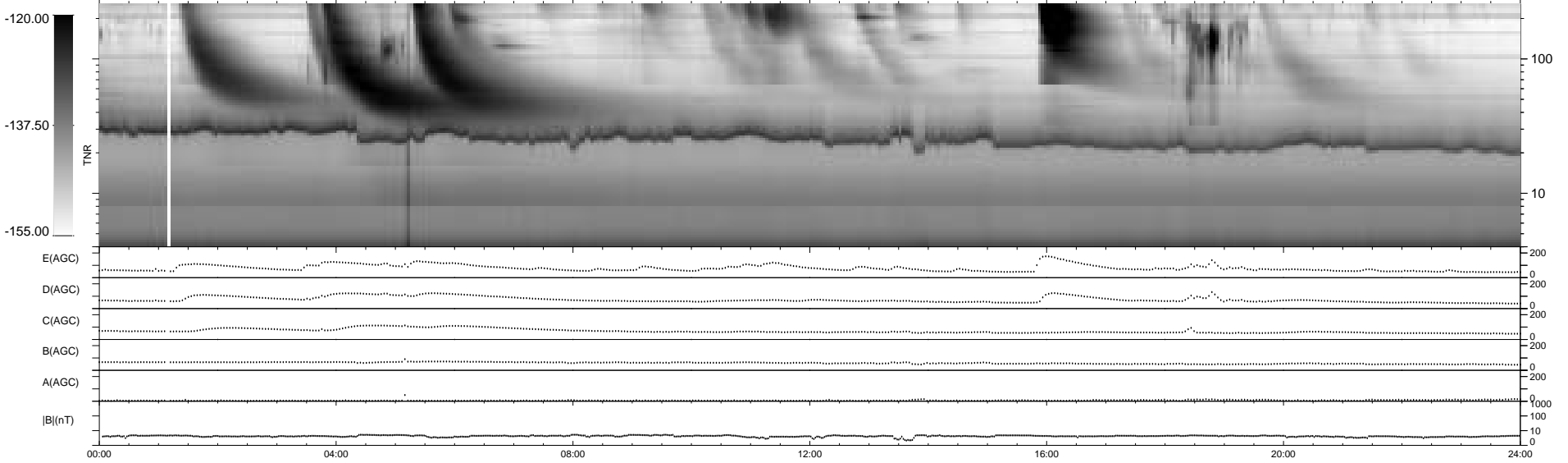
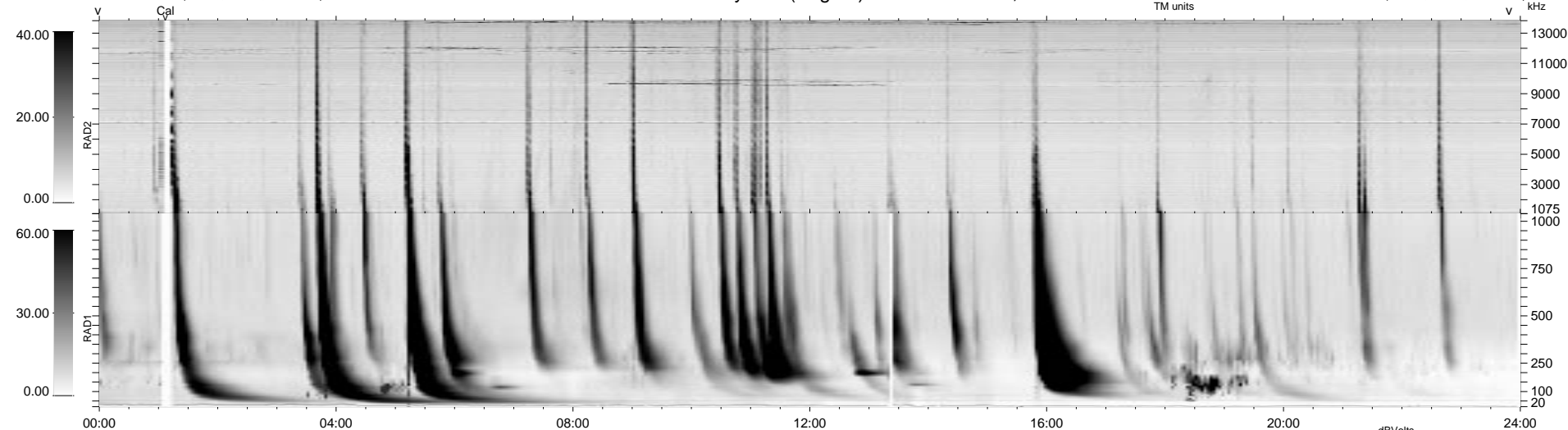


9 bad + 930 good MF/939MF projected (99%) - 0 missing MFs  
 Avg interval = 180 secs  
 Re = 201.32 (200.52, -17.34, 4.59 GSE)

1.7d VMS-SunOS LZ version = v01  
 DAILY Mon Sep 15, 2008  
 Re = 199.90 (199.16, -16.39, 5.06 GSE)

WIND/WAVES Summary Plot (Page 1) for 13-JUL-1999, DOY = 194



RAD2  
 Antenna Ey .....  
 Mode LIN(1) .....  
 SUM/SEP SEP .....  
 Toggle OFF .....  
 RAD1  
 Antenna Ex .....  
 Mode LIS(2,3) .....  
 SUM/SEP SUM .....  
 Toggle OFF .....  
 TNR  
 Antenna ExEy .....  
 Mode A-32 .....  
 Sweep ABCDE .....