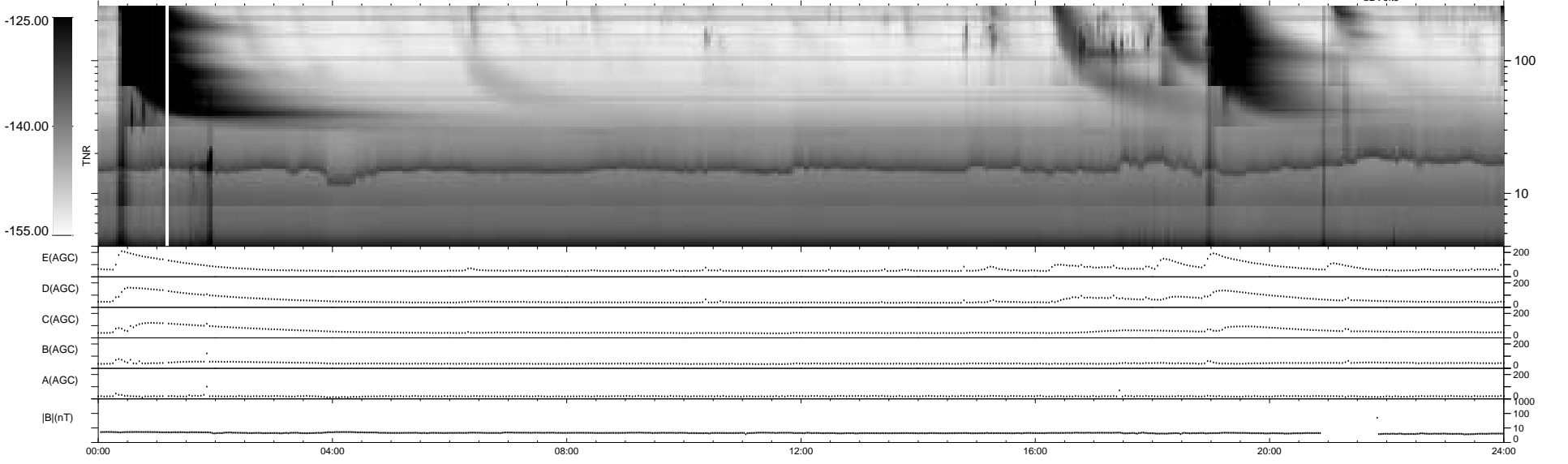
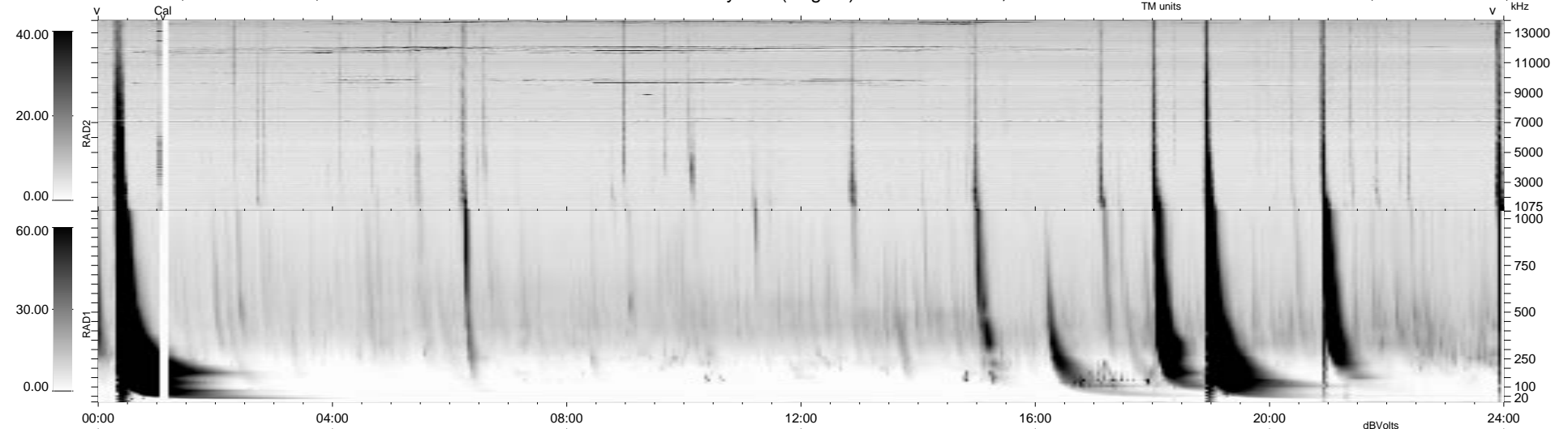


6 bad + 933 good MF/939MF projected (99%) - 0 missing MFs
 Avg interval = 180 secs
 Re = - 205.77 (204.74, -20.42, 2.65 GSE)

1.7d VMS-SunOS LZ version = v01
 DAILY Mon Sep 15, 2008
 Re = 204.85 (203.87, -19.76, 3.14 GSE)

WIND/WAVES Summary Plot (Page 1) for 09-JUL-1999, DOY = 190



RAD2 Antenna Ey
 Mode LIN(1)
 SUM/SEP SEP
 Toggle OFF

RAD1 Antenna Ex
 Mode LIS(2,3)
 SUM/SEP SUM
 Toggle OFF

TNR Antenna ExEy
 Mode A-32
 Sweep ABCDE